

# NAAC SSR REPORT

*Report Submitted By*



**H. P. S. COLLEGE**

*A Constituent Unit of L. N. Mithila University, Darbhanga*  
Dharmanand Nagar, Madhepur, District Madhubani (Bihar)

Est.: 1972

*Report Submitted To*



**NATIONAL ASSESSMENT AND ACCREDITATION COUNCIL**

*An Autonomous Institution of the University Grants Commission*

P. O. Box. No. 1075, Opp: NLSIU, Nagarbhavi, Bangalore - 560 072 India

## H.P.S.College, Madhepur, Madhubani (Bihar)

### NAAC S.S.R

#### Table of Index

<u>Sl.No</u>	<u>Contents</u>	<u>Page No</u>
1-	Preface of SSR	2 -5
2-	Writing Self Study Report	6
3-	Summary of Criterions-I To VII	7-11
4-	Profile of the College	12-22
5-	Criterion-I	23-30
6-	Criterion-II	31-50
7-	Criterion-III	51-62
8-	Criterion-IV	63-73
9-	Criterion-V	74-83
10-	Criterion-VI	84-96
11-	Criterion-VII	97-98
12-	Evaluative Report of the Departments	99-175
13-	Format for presentation of Practices	176-178
14-	Post Accreditation Initiative	179
15-	Declaration by the Head of the Institution	180
16-	Annexure	
	Letter of 2(f) & 12 (B)	181-182
	Construction Master Plan	183-189

## **SELF STUDY REPORT (SSR)**

### **H.P.S.COLLEGE, MADHEPUR, MADHUBANI (BIHAR)**

#### ***PREFACE***

Harshapati Singh College, Madhepur located in an extremely interior and rural area of Madhubani district, is a constituent unit of L.N.Mithila University Darbhanga and duly registered with the U.G.C New Delhi. The college assessed and accredited by NAAC in the year 2006 and graded “C”.

The place where the college is situated is the most undeveloped area of Bihar affected by the flood of devastating rivers like Koshi, Kamala-Balan, Gehunwa, Supain and others. More than 90 % of this area depends on agriculture. Agriculture is the main source of people’s livelihood. More than 55% people of this area is living below the poverty line. The literacy rate of this region is far below the average literacy rate of Bihar. The long cherished dream of education found expression in the establishment of a High School at Madhepur in the year 1914 and after that a chain of High Schools was established in this Koshi affected region. The High School of Madhepur primarily known as ‘Coronation High School became the central place of secondary education; it was later christened as ‘Jawahar High School’. Seeing the needs and importance of higher education people were looking forward for having a college in this vast area. The first effort was made in the year 1961 to open a college at Madhepur but failed due to paucity of funds. The existing college is the consequence of that beginning. Learned persons of the locality continued their efforts for providing higher education to the deprived classes who could not meet the expenses of the costly higher education and boarding at distant places.

It was felt that the higher education rate among the deprived classes including the girl students was far less than the places having a college. They also felt that due to the costly modern higher education at topographical hazards, it was not possible for people of this economically backward region. Even the able persons of the society did not allow their daughters to go out for higher education due to their traditional outlook. As it would have

been about 80% students of this locality were deprived from higher education, hence, they decided to establish a college at Madhepur. Keeping in view of these instances a meeting of learned persons was organized by the elder persons of the locality on 30th November 1971. They discussed the possibility and utility of having a college at Madhepur the central place of Koshi affected area.

A young educationist present in the meeting coming from the Khandwala Dynasty immediately agreed for giving essential financial help for opening a college at Madhepur. The meeting concluded with a noble hope and mission. The meeting decided for establishing a college at Madhepur, the aims and objectives of the college is to provide higher education facilities to the educationally deprived people of this region and also decided to promote higher education among the girl students. Again in that meeting it was also resolved that name of the proposed college would be “Harshapati Singh Mahavidyalaya” in the name of donor’s father. A steering committee was formed for calling a public meeting which was held on 19<sup>th</sup> December 1971 in the field of local Jawahar High School. In that meeting the precious decision to open a college at Madhepur was unanimously passed and the steering committee got the status of the Adhoc Committee of the proposed college, later on the university agreed with the proceeding.

The young educationist, who felt the necessity of the society of having a college at Madhepur, was also an honorable member of that very ‘Khandwala Dynasty’ which have much contribution in the field of education. He maintained that tradition of dynasty and devoted himself for the purpose. The dream of opening a college at Madhepur was seen in 1961 when he was a young man of only seventeen years old. He fulfilled a long awaited desire of the higher education by establishing a college named ‘H.P.S.College, Madhepur’ in the name of his father in this backward Koshi affected region. Since then, the college has developed on and on and later on it was made a constituent unit of L.N.Mithila University, Darbhanga on 23<sup>rd</sup> November 1980 and it has duly secured U.G.C registration.

The increasing number of students’ specially increasing percentage of SC/ST/OBC/Minority and the girl students are the sufficient evidence of its achievements for which the college was established.

People of this locality have a great fascination for this college not because of its anything but because of good academic environment and other facilities, the college provides. Even the girls feel safe in coming and going to the college due to the sense of respect in the hearts of the people. This sense of safety among the girls creates good environment in favour of college. In spite of all this the college has great advantage of its “Dan Koshes” i.e Donations given by the local people. This gave boom to this college for its development in the form of three complexes constructed by donors. With all its infrastructures, the college is running smoothly and successfully. It has celebrated its Silver Jubilee in 1998. Out of seven sponsored programmes, the college distributed 52 prizes among the students. The prizes are-

- 1- Dharmand Singh Smarak Kosh.
- 2- Mobarak Prize.
- 3- Sone-Shiv Cultural Prize.
- 4- Saraswati Nandan Singh Social Service Prize.
- 5- Bachche Lal Jha Cricket and Vishay Vastu Bodh Purashkar.
- 6- Banhipati Singh Pratibha Purashkar.
- 7- Dharmanand Maithili Shodhpeeth.

It is noted that the colleges of this university have come under conversion in four phases but this college got its conversion in the third phase. In all those colleges this college has a unique feature of its own. Even the library has got its books in bulk by its donors, the college is maintaining and keeping those books in proper manner. Late Pt. Radhanandan Jha, the former speaker of Bihar Legislative Assembly has donated his entire books to this college. Other two donors of books to the library are Dr. Sita Nath Jha, Rtd HOD Economics, Jagdam College, Chapra and Dr. Manreshwar Jha, IAS. The books donated by them are beneficial to our advance learners and research scholars. The founder of this college, late Prof. Dharmand Singh has donated interms of cash and books for the development of Maithili literature; this encouraged the college to start “Dharmand Maithili Shodh Peeth”. This is a rare effort among the entire colleges of L.N.Mithila University.

After the establishment of the college it has been developing gradually in the fields of

teaching learning, infrastructural expansion and other fields as well; those have enhanced the all round educational development of the college. The last NAAC accorded the institution “C” grade. Inspired by this, the institution has been putting its best for the second time accreditation now.

## Writing Self Study Report

It was impossible to complete this self study report without the whole- hearted support and co-operation of entire H.P.S. College family. At first I wish to thank our head of the institution, Prof. Satya Narayan Jha., Principal of our College who entrusted me to prepare this self study report (SSR). I am indebted to him for constant support and encouragement during the preparation of SSR. I also wish to extend my thanks to the Prof. Bhairweshwar Jha., and the members of IQAC who extended all support to our team. The preparation of SSR is not a single man's effort, rather a team effort. I am grateful to two hard working faculty members of our team Dr. Bishwanath Raut Physics and Prof. Umar Farooque, Department of English and who were with me at my side during the preparation of the report. Thanks are also due to Dr. Shubhkant Choudhary., Department of Hindi; Dr. Madan Jha, Department of Botany; Dr. Deo Kant Mishra, Department of Maithili; Prof. Bhim Nath Jha Department of History, Prof. Jivendra Mishra, Dept. of Sociology and Dr. Umesh Kumar Chaudhary, Dept. of Philosophy, Mr. Fazle Rub and Mr. Bhupendra Jha, who worked hard to procure the inputs from various offices and departments of the college.

Here, it is noteworthy to mention the name of Prof. Bhairweshwar Jha, Head of the department of English who in spite of his busy schedule bailed me out in preparing the executive summary of the report, I am grateful to him. Last but not the least I wish thank the members of office staff of the Principal Mr. Siddhi Nath Jha and Mr. Dinesh Pathak, and Mr. Durganand Jha for their inputs for part-I of the present report. I also wish to record my heartfelt thanks to all those who directly or indirectly supported / helped me in preparing the self study report (SSR).

I am very much keen to meet the Peer Team of NAAC during their forthcoming visit to our institution. Such occasion and interaction provides all of us; the management, faculty members, supporting staff, students and other stake holders to enrich our selves with their comments and suggestions.

We are eagerly looking forward to welcome the Peer Team and hope they will applaud us for our efforts.

With thanks and greetings

*Dr.Madneshwar Jha*

Co- ordinator, Steering Committee, Self Study Report

*The developmental aspects of the college may be analyzed under the following criterions.*

## **SECTION A. SUMMARY**

### **CRITERION I: CURRICULAR ASPECTS**

H.P.S.College Madhepur offers +2 and three year degree courses in Science, Arts and Commerce. The syllabi of +2 is prescribed by Bihar School Examination Board (Senior Secondary) Patna. Courses of studies for three year degree programme are settled by the L.N.Mithila University, Darbhanga. Students in degree classes can offer one subject for their honours course and they have to offer two more subjects as subsidiary courses. They have to take RBH. as upper standard Hindi and NHn. as lower standard. The graduation programme is divided into three parts. Two papers each they have to study in Part-I and Part-II and in Part –III they have to study four papers and one compulsory paper as General Studies. The goals and courses are made known to students and stakeholders through college website, prospectus etc. The principal and departmental council monitor the progress in a regular way. The institution organizes seminars and other programmes through donor's sponsored schemes to make student abreast with their courses and allied courses. Three new courses namely- Geography, Home Science and Commerce have been started to satisfy the demands of students and people. The college N.S.S.unit telescope together students with national zeal and the society at large.

### **CRITERION II: TEACHING-LEARNING AND EVALUATION**

H.P.S.College Madhepur admits students into various courses of Arts , Science and Commerce and abides by the reservation policy of the Govt. of Bihar. The college pursues academic calendar prepared and circulated by L.N.Mithila University, Darbhanga. Class routine is prepared by the Prof. in charge and classes are distributed among teachers by the heads of different departments. Regular internal tests are conducted by teachers in every department in order to assess the progress of students. Weak students are given opportunity for special tutorials by the teachers in every department.

The institution has eleven permanent teachers including the principal in charge. Six teachers



have doctoral degree to their credit and almost all the teachers keep on writing articles of fair quality. Teaching work (both theoretical and practical classes) entirely managed by the permanent teachers. The regular lecture method still continues to be the most favoured mode of teaching. Keeping in view the recommendation of Peer Team 2006, most of the departments have been provided with computer and internet, Wi-Fi and other facility. We are in the way for the provision of Language Lab. Seminars and conferences often take place to motivate the students as well as the teachers. It should be noted that the college is running with a group of only eleven teachers as against the sanctioned strength of 29. It is with less than 38% of the faculty strength that the affairs of the college are being managed for the last so many years. Needless to say that workloads on faculty members has increased many folds and it often becomes difficult to introduce more creative programmes in college. The ability and commitment of faculty members and the staff has brought tangible enhancement in the number of learners over the years.

A separate wing of Dharmanand Shodh Peeth is established in the college to facilitate researchers in the field of Maithili literature. Under its auspicious two books have been published recently namely-‘Geet Malika’, and edited work of “Early Modern Time and Ek Pheriwala ke Mrityu” is a Maithili translation of Arthur Miller’s ‘Death of a Salesman’. Two other manuscripts are in pipeline.

### **CRITERION III: RESEARCH, CONSULTANCY AND EXTENSION**

The institution has six teachers with the doctoral degree and three of them are guiding research work. In as much as consultancy service is concerned the college runs coaching programmes for Entry in Service meant to facilitate the privileged classes (SC/ST/OBC/Minority) for getting into services like SSC, Banking services, Railway etc. Besides there is a career counseling course which enlightens the students on the relevance and ramification of courses in traditional disciplines. This cell circulates the downloaded information on job opportunity, scholarship etc to the students of all three faculties through the heads of different departments. The faculty member of this college also works for a number of extension activities. Such activities are mainly conducted by the one unit of N.S.S working in this college. Every year the N.S.S. unit conducts programmes on issues of

high social relevance eg. rural sanitation, aids awareness, plantation etc. The prof. in charge of N.S.S. happens to be the ex officio co-ordinator of the Red Ribbon Club. The college department of Sports and Culture conducts athletics, indoor games and various cultural activities. Through various donor's sponsored programmes the institution conducts debate, Quiz competition, G.K., Correct writing, extempore lecture, Essay competition etc.

#### **CRITERION IV: INFRASTRUCTURE AND LEARNING RESOURCES**

H.P.S.College Madhepur is situated on a consolidated piece of 21.84 sq.m. in the rural area of Madhubani district. As of now the three faculties and the administrative block run in the same building. Central library equipped with all the modern equipment , girl's hostel, Harijan Hostel, common rooms, cycle shed and girl's common room have their independent building. This college provides computer, internet with Wi.Fi, Fax and Zerox facility to almost all the departments. Portable audio visual unit, projector and wireless amplification unit are available in the college. Students can avail the facility of zerox in the campus at a nominal fee. The college library which works from 10 AM to 4 P.M, has a independent computer attached with internet facility with wi.fi. Faculty members, students and staff can avail themselves of this facility during working hours. Since Madhepur suffers from perennial shortage of electricity, the college provides stand by (high power generator) system for smooth operation of works. The faculty members, the students and staff can get cool and filtered drinking water during working hour. There is a provision of canteen and health centre within the campus.

#### **CRITERION V: STUDENT SUPPORT AND PROGRESSION**

The institution publishes its updated prospectus annually and ensures its commitment, accountability through this. The financial aids received from different agencies has been disbursed and made available to the students on due time. Through the remedial courses, entry in service scheme, career and counseling cell, free studentship for students from SC/ST/OBC/Minority and economically weaker section of the society, student gets support. Physically handicapped boys and girls get reservation in admission, free studentship and relaxation in books. The institution provides medical assistance to students. Slow learners

get special attention from departmental teachers. Students take part in different donor sponsored and athletic programmes. In the co-educational atmosphere the number of new entrance is rising immensely and there is no gender disturbance in the campus. The alumni association shares our responsibility.

## **CRITERION VI: GOVERNANCE, LEADERSHIP AND MANAGEMENT**

H.P.S.College Madhepur is a constituent unit of L.N.Mithila University Darbhanga since 23<sup>rd</sup> November 1980. The management of the college thus rests with the university. The principal handles all issues regarding the offices, students, departments, the teachers within the prescribed guidelines of the university. There is a staff council where the principal explains the policies to be followed in general. This council also works as a forum from where the principal often addresses the members of teaching as well as non-teaching staff to motivate them for better and still better performance. In order to decentralize and animate the system the principal constitutes different committees consisting of senior teachers. These committees deliberate on concern issues and advise the principal on appropriate mode of decision for the conduct of business in the college. The principal being the chairperson of all such committees works to put the resolution taken by the committees to practice. Some of the committees are-

1. Admission Committee
2. Purchase Committee
3. Committee for maintenance of discipline
4. Sports Committee
5. Estate committee
6. Library Committee
7. Women Empowerment Cell
8. Advisory Committee
9. Grievance Redressal Cell
10. Monitoring Cell

The principal decentralizes operational autonomy by forming different committees. The principal bursar and the university representative effectively monitor the available financial

resources. The university audit team and the chartered accountant nominated by the institution do the external audit. IQAC was set up in September'2012 and most of the recommendation made by it has been implemented and yet other proposal are in the pipeline.

### **CRITERIA VII: INNOVATIONS AND BEST PRACTICES**

The institution conducts a green audit of its campus and facility. Solar power units have been installed. A separate pond has been constructed for water harvesting. Plantation of trees is done by the N.S.S. unit. Some innovations like computerization of departments, development of college website, digitalization of college central library, making an eco-friendly green campus and internet with wi.fi facility have brought about a sea change in the smooth functioning of the institution.

## SECTION B. Profile of the Affiliated / Constituent College

1- Name and address of the college:

Name: <b>H.P.S.College</b> Address: Madhepur City - Madhubani, PIN- 847408, State- Bihar Website: <a href="http://www.hpscollege.com">www.hpscollege.com</a>
-----------------------------------------------------------------------------------------------------------------------------------------------------------------------

2. For Communication:

Designation	Name	Telephone with STD Code	Mobile	Fax	Email
Principal	Dr. Bishwanath Raut	O-06273-283226 R-06273-282318	9931909218	06273-283226	<a href="mailto:bnrhps@gmail.com">bnrhps@gmail.com</a> <a href="mailto:principal@hpscollege.com">principal@hpscollege.com</a>
Vice Principal	Prof. Bhairweshwar Jha	O-06273-283226 R-	9534490594		
Steering Committee Co-ordinator	Dr. Madneshwar Jha	O-06273-283226 R-06273-283522	9931292365		<a href="mailto:jhamadneshwar@gmail.com">jhamadneshwar@gmail.com</a>

3. Status of the Institution:

Affiliated College  
 Constituent College  
 Any Other (Specify)


4. Type of Institution:

a. By Gender  
   i- For Men  
   ii- For Women  
   iii- Co-education


b- By Shift  
   i.Regular  
   ii.Day  
   iii.Evening


5. Is it a recognized minority institution?

Yes ☐

No ☐

If yes specify the minority status (Religious/Linguistic/any other) and provide documentary evidence.

6. Source of Funding:

Government

Grant.in.aid

Self-financing

Any other.


7. a. Date of establishment of the college: 15/06/1972

b. University to which the college is affiliated/or which governs the college (If it is a constituent college).

c. Details of UGC recognition:

Under Section	Date , Month & Year (dd-mm-yyyy)	Remarks (If any)
i. 2 (f)	10-06-1981	
ii. 12(B)	01.10.1984	

(Enclose the Certificate of recognition u/s 2(f) and 12(B) of the UGC Act)

d. Details of recognition/approval by statutory/regulatory bodies other than UGC.

(AICTE , NCTE , MCI, DCI, PCI, RCI etc.) -NA

Under Section/clause	Recognition/Approval details Institution/Department/ Programme	Day, Month and Year (dd-mm-yyyy)	Validity	Remarks
i.				
ii.				
iii.				
iv.				

(Enclose the recognition/approval letter).

8. Does the affiliating university Act provide for conferment of autonomy (as recognized by the UGC) on its affiliated college?

Yes ☐

No ☐

If yes, has the college applied for availing the autonomous status?

Yes ☐

No ☐

9. Is the college recognized

a. by UGC as a college with Potential for Excellence (CPE)?

Yes ☐

☐ No

If yes, date of recognition: .....( dd/mm/yyyy).

b. for its performance by any other governmental agency?

Yes ☐

No ☐

If yes, Name of the Agency.....and

date of recognition.....(dd/mm/yyyy).

10. Location of the Campus and area in sq.mts:

Location*	Rural
Campus area in sq.mts.	21084
Built area in sq. mts.	8094

(\* Urban, Semi-urban, Rural, Tribal, Hilly Area, Any others specify).

11. Facilities available on the campus. (Tick the available facility and provide numbers or other details at appropriate places) or in case the institute has an agreement with other agencies in using any of the listed facilities provide information on the facilities covered under the agreement.

• Auditorium / Seminar complex with infrastructural facilities -No

• Sports facilities

\* Play ground -Yes

\* Swimming pool -No

\* Gymnasium -No

• Hostel

\* Boy's Hostel

i- Number of hostels- 1

ii- Number of inmates- 32

iii- Facilities (Mention available facilities)

## \* Girl's hostel

- i- Number of hostels- 1
- ii- Number of inmates- 25
- iii- Facilities (Mention available facilities)

## \* Working Women's hostel.

- i- Number of inmates
- ii- Facilities (Mention available facilities)

- Residential facilities for teaching and non-teaching staff (give numbers available-cadre wise) No
- Cafeteria- Yes
- Health Centre Yes

First aid, inpatient, outpatient, Emergency care facility, Ambulance.....

Health Centre staff-

Qualified doctor	Full time	Part-time	<input type="text"/>	<input type="text"/>
Qualified doctor	Full time	Part-time	<input type="text"/>	<input type="text"/>

- Facilities like banking, post office, book shops- ATM facility
- Transport facilities to cater to the needs of students and staff No
- Animal House. No
- Biological Waste disposal No
- Generator or other facility for management/regulation of electricity and voltage. Yes
- Solid waste management facility. No
- Waste water management. No
- Water harvesting. No

## 12. Details of programmes offered by the college (Give data for current academic year).

S.No	Programme Level	Name of the Programme/ Courses	Duration	Entry Qualification	Medium of instruction	Sanctioned/approved student strength	No. of students admitted
1-	Under-Graduate	B.A.(Hons/Gen) B.Sc.(Hons/Gen) B.Com. (Hons/Gen)	3 years 3 years 3 years	+2 level each of courses	Hindi / English	125 in each of the courses besides History, Sociology & Commerce	B.A- 549 B.Sc- 73 B.Com- 211



						A/C.Hons.	
	Post-Graduate						
	Integrated Programmes P.G.						
	Ph.D.						
	M.Phil						
	Ph.D						
	Certificate courses						
	UG Diploma						
	P.G.Diploma						
	Any other(specify and provide details)						

13. Does the college offer self-financed Programmes?

Yes ☐ No ☐

If yes, how many?

14. New programmes introduced in the college during the last five years if any?

Yes		No		Number	03
-----	--	----	--	--------	----

15. List the departments: (respond if applicable only and do not list facilities like Library, Physical Education as departments, unless they are also offering academic degree awarding programmes. Similarly, do not list the departments offering common compulsory subjects for all programmes like English, regional languages etc.)

Particulars	UG	PG	Research
Science	05	0	0
Arts	11	0	0
Commerce	01	0	0
Any Other not covered above	0	0	0

16. Number of Programmes offered under (Programme means a degree course like BA, BSc, MA, M.Com, ...)

a. annual system

b. semester system

c. trimester system

17. Number of Programmes with

a. Choice Based Credit System

b. Inter / Multidisciplinary Approach

c. Any other (specify and provide details)

18. Does the college offer UG and/or PG programmes in Teacher Education?

Yes ☐ No ☐

If yes,

a. Year of Introduction of the programme(s)..... (dd/mm/yyyy)  
and number of batches that completed the programme.

b. NCTE recognition details (if applicable) Notification No.: .....  
Date:..... (dd/mm/yyyy)  
Validity:.....

c. Is the institution opting for assessment and accreditation of Teacher Education Programme separately?

Yes ☐ No ☐

19. Does the college offer UG or PG Programme in Physical Education?

Yes ☐ No ☐

If yes,

a. Year of Introduction of the programme(s)..... (dd/mm/yyyy)  
and number of batches that completed the programme.

b. NCTE recognition details (if applicable) Notification No.: .....

Date: ..... (dd/mm/yyyy) Validity:.....

c. Is the institution opting for assessment and accreditation of physical education programme separate.

Yes ☐

No ☐

20. Number of teaching and non-teaching positions in the Institution

Positions	Teaching faculty						Non-teaching staff	Technical staff		
	Professor		Associate Professor		Assistant Professor					
	*M	*F	*M	*F	*M	*F	*M	*F	*M	*F
Sanctioned by the UGC /University/ State Government Recruited	0	0	09	0	02	0	15	01	01	0
Yet to recruit	0	0	0	0	17	0	03	0	0	0
Sanctioned by the Management/society or other authorized bodies Recruited										
Yet to recruit	0	0	0	0	0	0	0	0	0	0

\*M-Male \*F-Female

21. Qualifications of the teaching staff:

Highest qualification	Professor		Associate Professor		Assistant Professor		Total
	Male	Female	Male	Female	Male	Female	
Permanent teachers							
D.Sc./D.Litt.	0	0	0	0	0	0	0
Ph.D.	0	0	05	0	01	0	06
M.Phil.	0	0	0	0	0	0	0
PG	0	0	04	0	01	0	05
Temporary teachers							
Ph.D.	0	0	0	0	0	0	0

M.Phil.	0	0	0	0	0	0	0
PG	0	0	0	0	0	0	0
Part-time teachers							
Ph.D.	0	0	0	0	0	0	0
M.Phil.	0	0	0	0	0	0	0
PG	0	0	0	0	01	0	01

22. Number of Visiting Faculty / Guest Faculty engaged with the College.

NA

23. Furnish the number of the students admitted to the college during the last four academic years.

Categories	Year .1-10-11		Year 2 -11-12		Year 3-12-13		Year 4-13-14	
	Male	Female	Male	Female	Male	Female	Male	Female
SC	25	03	35	03	26	10	53	18
ST	03	0	0	0	0	01	01	0
OBC	92	56	86	37	224	102	243	127
General	39	74	171	146	118	157	145	160
Others-Min. Handicapped	37	06	33	17	44	19	67	18

24. Details on students enrollment in the college during the current academic year:

Type of students	UG	PG	M. Phil.	Ph.D.	Total
Students from the same state where the college is located	832	0	0	0	832
Students from other states of India	0	0	0	0	0
NRI students	0	0	0	0	0
Foreign students	0	0	0	0	0
Total	832	0	0	0	832

25. Dropout rate in UG and PG (average of the last two batches)

UG

24%

PG

Nil

## 26. Unit Cost of Education

(Unit cost = total annual recurring expenditure (actual) divided by total number of students enrolled)

(a) including the salary component

18423.00
1149.00

(b) excluding the salary component

## 27. Does the college offer any programme/s in distance education mode (DEP)?

Yes ☐ No ☐

If yes,

a) Is it a registered centre for offering distance education programmes of another University

Yes ☐ No. ☐

b) Name of the University which has granted such registration.

c) Number of programmes offered

d) Programmes carry the recognition of the Distance Education Council.

Yes ☐ No ☐

28. Provide Teacher-student ratio for each of the programme/course offered

Programme/Course	Teachers	Students (UG)	Teacher/Student Ratio
Physics	01	15	15:1
Chemistry	0	15	15:0
Mathematics	0	39	39:0
Botany	01	01	01:1
Zoology	01	07	07:1
English	02	16	08:1
Hindi	01	07	07:1
Maithili	01	16	16:1
Sanskrit	0	01	01:0
Urdu	0	06	06:0
Economics	01	32	32:1
History	01	228	228:1
Sociology	01	73	73:1
Political Science	0	40	40:1
Psychology	0	70	70:1
Philosophy	01	01	01:1
Home Science	0	36	036:1
Geography	0	19	19:0
Account	01	211	211:1

29. Is the college applying for

Accreditation: Cycle 1 ☐ Cycle 2 ☐ Cycle 3 ☐ Cycle 4 ☐

Re-Assessment: ☐

(Cycle 1 refers to first accreditation and Cycle 2, Cycle 3 and Cycle 4 refers to re-accreditation)

30. Date of accreditation\* (applicable for Cycle 2, Cycle 3, Cycle 4 and re-assessment only)

Cycle 1: **20/01/2006** (dd/mm/yyyy) Accreditation Outcome/Result- **?C?**

Cycle2: ..... (dd/mm/yyyy) Accreditation Outcome/Result.....

Cycle3: ..... (dd/mm/yyyy) Accreditation Outcome/Result.....

\* Kindly enclose copy of accreditation certificate(s) and peer team report (s) as an annexure.

31. Number of working days during the last academic year.

273

32. Number of teaching days during the last academic year 242

(Teaching days means days on which lectures were engaged excluding the examination days)

33. Date of establishment of Internal Quality Assurance Cell (IQAC)

**IQAC - 23/08/2012** (dd/mm/yyyy)

34. Details regarding submission of Annual Quality Assurance Reports (AQAR) to NAAC.

AQAR (i) 20/12/2013 (dd/mm/yyyy)

AQAR (ii) ..... (dd/mm/yyyy)

AQAR (iii) ..... (dd/mm/yyyy)

AQAR (iv) ..... (dd/mm/yyyy)

35. Any other relevant data (not covered above) the college would like to include. (Do not include explanatory/descriptive information).

## CRITERION I: CURRICULARE ASPECTS

### **1.1. Curriculum design and development:**

#### **1.1.1. State the vision and mission of the institution:**

##### **VISION:**

Established in 1972, H.P.S.College, Madhepur had behind it the vision of the founder and other enlightened persons of the area to promote education in this economically and educationally backward region. For miles altogether there was no college in the area to promote higher education. Boys did have access to high school but girls were not allowed by the then time society to have the benefits of education. The mission and objectives of this institution is to facilitate higher education to men and women of this educationally backward area to meet the emerging challenges of the society locally and on national level.

##### **MISSION OF THE COLLEGE:**

- The mission of the college is to appreciate and respect all faiths, to nurture self and community development and promote religious and communal harmony leading to national integration.
- To create a teaching learning environment conducive to the pursuit of higher knowledge relevant skills and experience up to undergraduate level.
- To promote awareness on ecological, environmental and burning issues.
- To motivate students on socio-economic issues making emphasis on gender and human rights by engaging them in extra-curricular activities.
- To give inputs to students to become good students and above all to promote them as good and responsible citizens.
- To foster quality education and high moral standard covering on government level.
- To educate students of all sections of the society.
- To provide equal opportunity to both genders and bring awareness in women specially.
- To develop the skills of students for better employment prospect.



**1.1.2. How does the institution develop and deploy action plans for effective implementation of the curriculum? Give details of the process and substantiate through specific example(s).**

- The curriculum is reviewed and updated by the University at every five years in general. The Academic Council of the University develops and prepares the same by constituting a committee of senior teachers of concerned departments. The college does not have a role to play in developing and preparing the same but it has a pivotal role in displaying action plan through college council.

**OBJECTIVES:**

- To foster quality education and high moral standards
- To educate students of all sections of the society
- To incorporate the latest scientific and technological development in the curriculum
- To provide conducive environment for creativity & research
- To provide equal opportunity to both genders
- To develop the skills of students for better employment prospects through UGC sponsored programmes like Career & Counseling, Entry in Services Schemes and Remedial Coaching Classes to the weaker section of the society.

**GOALS:**

The goals are made known to the students and other stakeholders through :

- College website
- Prospectus
- Alumni Association
- Students meetings
- Display in the college campus
- Student's and guardian's meeting.

**1.1.3. What type of support (procedural and practical) do the teachers receive (from the University and/or institution) for effectively translating the curriculum and improving teaching practices?**

- The university organizes workshops from time to time in order to bring changes in the curriculum and to improve teaching skill of the teachers.
- Teachers of the respective departments also participate in refresher courses organized by the U.G.C. to improve their teaching skills.

**1.1.4. Specify the initiatives taken up or contribution made by the institution for effective curriculum delivery and transaction on the Curriculum provided by the affiliating University or other Statutory agency.**

- The college is represented by the principal in Academic Council and thereby providing necessary inputs to the council.

**1.1.5. How does the institution network and interact with beneficiaries such as industry, research bodies and the university in effective operationalisation of the curriculum?**

- Being an active member of the Academic Council, the principal brings to the notice of the university and other academic bodies about the effective operation of the curriculum.
- Suggestions of the beneficiaries are invited through internet.
- Teachers do take part in promoting awareness among students in classes.

**1.1.6. What are the contributions of the institution and/or its staff members to the development of the curriculum by the University?(number of staff members/departments represented on the Board of Studies, student feedback, teacher feedback, stakeholder feedback provided, specific suggestions etc.**

- The institution and the staff members do not play any role in the preparation and development of the curriculum.
- P.G. Heads and the respective departments as well as the members of the Board on the committee are engaged in the preparation of curriculum.

**1.1.7. Does the institution develop curriculum for any of the courses offered (other than those under the purview of the affiliating university) by it? If 'yes', give details on the process ('Needs Assessment', design, development and planning) and the courses for which the curriculum has been developed.**

- No.

**1.1.8. How does institution analyze/ensure that the stated objectives of curriculum are achieved in the course of implementation?**

- Departmental Councils of the college ensures whether the objectives of the curriculum have been implemented or not.

## **1.2. Academic Flexibility:**

**1.2.1. Specifying the goals and objectives give details of the certificate / diploma / skill development courses etc., offered by the institution.**

- The institution imparts teaching up to Degree level in Arts, Science and Commerce.
- The goal and objective of the institution is to develop skill of the students, so that they may be able to meet emerging challenges of the society as well as the nation at large by obtaining certificates in different streams.

**1.2.2. Does the institution offer programmes that facilitate twinning / dual degree? If, yes', give details.**

- Yes, the college provides facilities to the students for dual degree.
- Students may complete other courses along with the regular courses.

**1.2.3. Give details on the various institutional provisions with reference to academic flexibility and how it has been helpful to students in terms of skills development, academic mobility, progression to higher studies and improved potential for employability**

- Range of Core /Elective options offered by the University and those opted by the college-

-No

- Elective options are offered by the college to the students for obtaining admission in various courses. -Yes
- Choice Based Credit System and range of subject options -Yes
- Courses offered in modular form -Yes
- Credit transfer and accumulation facility -Yes
- Lateral and vertical mobility within and across programmes and courses -No
- Enrichment courses -Yes

Career & Counseling, Entry in Service Schemes and Remedial Coaching Classes

**1.2.4. Does the institution offer self-financed programmes? If ?yes?, list them and indicate how they differ from other programmes, with reference to admission, curriculum, fee structure, teacher qualification, salary etc.**

- No

**1.2.5. Does the college provide additional skill oriented programmes, relevant to regional and global employment markets? If ?yes? provide details of such programme and the beneficiaries.**

- No

**1.2.6. Does the University provide for the flexibility of combining the conventional face-to-face and Distance Mode of Education for students to choose the courses/combination of their choice? If ?yes?, how does the institution take advantage of such provision for the benefit of students?**

- Yes, university provides facilities for the flexibilities of combining conventional and distance mode of education for the students to choose the courses.

### **1.3. Curriculum Enrichment:**

#### **1.3.1. Describe the efforts made by the institution to supplement the University's Curriculum to ensure that the academic programmes and Institution's goals and objectives are integrated?**

- The college implements the university curriculum and makes proper efforts to complete and ensure teaching within the stipulated time.
- In implementing and ensuring the academic programmes, the goals and objectives of the College are integrated with the university curriculum.

#### **1.3.2. What are the efforts made by the institution to modify, enrich and organize the curriculum to explicitly reflect the experiences of the students and cater to needs of the dynamic employment market?**

- The institution implements the curriculum prepared and developed by the academic council of the university.
- The institution has no role in modifying and enriching the curriculum.
- Being the member of the academic council the principal puts forward the experiences of the teachers and the students before the academic bodies.
- The concerned academic bodies modify enrich and reorganize the curriculum accordingly keeping in view the needs of the dynamic employment and emerging challenges of markets.

#### **1.3.3. Enumerate the efforts made by the institution to integrate the cross cutting issues such as Gender, Climate Change, Environmental Education, Human Rights, ICT etc., into the curriculum?**

- Gender, climate change and environmental education programmes have been included in the curriculum. Besides the institution organizes seminars and lectures on these issues.
- The college N.S.S unit also organizes programmes like debate, quiz, tree plantation and lectures on burning social issues.

#### **1.3.4. What are the various value-added courses/enrichment programmes offered to ensure holistic development of students?**

##### **Moral and Ethical Value:**

- The institution has no such value-added courses.

##### **Employable and Life skills:**

- There are some organizations financed by donors to train students in such skills through participation in debates, correct writing competition, G.K., essay competition, embroidery, painting, drawing sketches etc.

##### **Better Career Options:**

- Keeping in view the increasing demands of students and guardians of the locality, the college has made available courses in Commerce, Geography and Home Science upto graduation level. U.G.C.sponsored programmes like Career Counseling and Entry in Services schemes are enforced.

##### **Community Orientation:**

- The institution ensures community orientation through its N.S.S. unit. The institution has a full-fledged unit of National Social Service comprising of hundred students. It organizes camps during long vacations. During camp periods, students are motivated to clean roads, streets, school campus and such public places. People are taught to keep cleanliness in their daily life. Young boys and girls are encouraged to enroll themselves in schools. Literacy programmes are organized in selected pockets of underprivileged section of the society.
- Tree plantation is done on special occasion such as Independence Day, Republic Day, College Day etc.
- Under the auspicious of “Saraswati Nandan Singh Smarak Kosh” in the college, the N.S.S organizes essay competition on burning social issues every year.

#### **1.3.5. Citing a few examples enumerate on the extent of use of the feedback from stakeholders in enriching the curriculum?**

- The college does not have the role in designing the curriculum.

- Whenever the grievances and suggestions are received from stakeholders these are forwarded to university for proper consideration.

#### **1.3.6. How does the institution monitor and evaluate the quality of its enrichment programmes?**

- Through student feedback and the progress report of the various departments, the institution monitors and evaluates the quality of its enrichment programmes.

### **1.4. Feedback System:**

#### **1.4.1. What are the contributions of the institution in the design and development of the curriculum prepared by the University?**

- No role played by the institution in designing and developing of the curriculum.

#### **1.4.2. Is there a formal mechanism to obtain feedback from students and stakeholders on Curriculum? If ?yes?, how is it communicated to the University and made use internally for curriculum enrichment and introducing changes/new programmes?**

- There is no such formal mechanism exist in the college.

#### **1.4.3. How many new programmes/courses were introduced by the institution during the last four years? What was the rationale for introducing new courses/programmes?)**

- Three new programmes are introduced in last four years, namely B.Com (Hons/Pass), Geography and Home Science (Hons/Pass).
- These courses and programmes are introduced due to the several requests of the guardians, students and demands of the market.

## **CRITERION II: TEACHING ? LEARNING AND EVALUATION**

### **2.1. Student Enrolment and Profile:**

#### **2.1.1. How does the college ensure publicity and transparency in the admission process?**

- With the beginning of the academic session the college administration advertises the date and admission process in the esteemed daily news paper of the region and notifies the same on the college notice board and also on the college website.
- Details of the admission process are also given to the applicants through college prospectus in order to keep transparency in the process.

#### **2.1.2. Explain in detail the criteria adopted and process of admission (Ex. (i) merit (ii) common admission test conducted by state agencies and national agencies (iii) combination of merit and entrance test or merit, entrance test and interview (iv) any other) to various programmes of the Institution.**

- The college administration invites applications from students willing to get themselves admitted into the various courses of the institution.
- Aspirants have to apply by filling up prescribed admission form within the stipulated period.
- All the admission forms are scrutinized and processed by the admission committee.
- Selection of the candidates for admission is finalized on the basis of their merit and interview keeping in view the limitation of the seats as well as the reservation policy laid down by the state government.
- The final list of the selected candidates for admission into various programmes is published on the college notice board and also on the college websites.

#### **2.1.3. Give the minimum and maximum percentage of marks for admission at entry level for each of the programmes offered by the college and provide a comparison with other colleges of the affiliating university within the city/district.**



- This college is situated in the rural area and there is no other college in the radius of twenty km in the locality.
- The institution has the objective to provide equal opportunity of admission to the students belonging to various section of the society.
- Minimum percentage of marks for admission at entry level is 45% for opting Hons. as per the norms and guidelines of the academic council of the university.
- Almost similar is the minimum percentage of marks required at entry level in other colleges of the university.

**2.1.4. Is there a mechanism in the institution to review the admission process and student profiles annually? If yes? what is the outcome of such an effort and how has it contributed to the improvement of the process?**

- The admission committee reviews the admission process and students profile annually.
- The committee points out the shortcomings and also suggests various ways to rectify the admission process.
- This effort of the institution has contributed a lot and has a satisfactory outcome.

**2.1.5. Reflecting on the strategies adopted to increase/improve access for following categories of students, enumerate on how the admission policy of the institution and its student profiles demonstrate/reflect the National commitment to diversity and inclusion**

- SC/ST- As per the reservation policy laid down by the state/ Central government.
- OBC- As per the reservation policy laid down by the state/ Central government.
- Women- As per the reservation policy laid down by the state/ Central government.
- Differently abled- As per the reservation policy laid down by the state/ Central government.
- Economically weaker sections- As per the reservation policy laid down by the state/ Central government.

- Minority community- As per the reservation policy laid down by the state/ Central government.
- Any other-
- The institution has a transparent policy that does not discriminate between the aspirants willing to get admission in the various courses.
- The institution also provides equal opportunity to the students belonging to SC/ST/OBC/Women/Minority and other privileged section of the society.
- The institution has adopted such admission policy in which the National commitment to diversity and inclusion reflect obviously.

**2.1.6. Provide the following details for various programmes offered by the institution during the last four years and comment on the trends. i.e. reasons for increase / decrease and actions initiated for improvement.**

Session: 2009 - 10			
Programme-UG	Number of applications	Number of students admitted	Demand Ratio
Physics	02	02	1:1
Chemistry	02	02	1:1
Mathematics	00	00	0:0
Botany	01	01	1:1
Zoology	02	02	1:1
English	05	05	1:1
Hindi	10	10	1:1
Maithili	18	18	1:1
Sanskrit	00	00	0:0
Urdu	08	08	1:1
Economics	15	15	1:1
History	93	93	1:1
Sociology	105	105	1:1
Political Science	16	16	1:1
Psychology	18	18	1:1
Philosophy	01	01	1:1

Home Science	00	00	0:0
Geography	00	00	0:0
Account	00	00	0:0
<b>Session: 2010 - 11</b>			
Programme-UG	Number of applications	Number of students admitted	Demand Ratio
Physics	01	01	1:1
Chemistry	01	01	1:1
Mathematics	03	03	1:1
Botany	00	00	0:0
Zoology	02	02	1:1
English	05	05	1:1
Hindi	09	09	1:1
Maithili	08	08	1:1
Sanskrit	00	00	0:0
Urdu	06	06	1:1
Economics	32	32	1:1
History	125	125	1:1
Sociology	85	85	1:1
Political Science	23	23	1:1
Psychology	28	28	1:1
Philosophy	01	01	1:1
Home Science	00	00	0:0
Geography	00	00	0:0
Account	00	00	0:0
<b>Session: 2011 - 12</b>			
Programme-UG	Number of applications	Number of students admitted	Demand Ratio
Physics	05	05	1:1
Chemistry	05	05	1:1
Mathematics	07	07	1:1
Botany	02	02	1:1
Zoology	02	02	1:1
English	05	05	1:1
Hindi	10	10	1:1
Maithili	12	12	1:1

Sanskrit	00	00	0:0
Urdu	01	01	1:1
Economics	26	26	1:1
History	158	158	1:1
Sociology	126	126	1:1
Political Science	42	42	1:1
Psychology	52	52	1:1
Philosophy	01	01	1:1
Home Science	04	04	1:1
Geography	09	09	1:1
Account	56	56	1:1
<b>Session: 2012 - 13</b>			
Programme-UG	Number of applications	Number of students admitted	Demand Ratio
Physics	17	17	1:1
Chemistry	16	16	1:1
Mathematics	09	09	1:1
Botany	01	01	1:1
Zoology	04	04	1:1
English	06	06	1:1
Hindi	09	09	1:1
Maithili	04	04	1:1
Sanskrit	0	0	0:0
Urdu	04	04	1:1
Economics	16	16	1:1
History	250	250	1:1
Sociology	89	89	1:1
Political Science	34	34	1:1
Psychology	53	53	1:1
Philosophy	0	0	0:0
Home Science	29	29	1:1
Geography	10	10	1:1
Account	146	146	1:1

## **2.2. Catering to Diverse Needs of Students:**

### **2.2.1. How does the institution cater to the needs of differently-abled students and ensure adherence to government policies in this regard?**

- The college categorizes the variously abled students at the time of admission.
- The institution focuses its endeavour to bring them up at par with the advanced learners.
- Special classes besides regular class are organized for the educationally poor as well as slow learners.
- In long vacations like summer and DP, special classes are organized for the slow learners and differently abled students.

### **2.2.2. Does the institution assess the students' needs in terms of knowledge and skills before the commencement of the programme? If yes, give details on the process.**

- The evaluation of students' needs in terms of knowledge and skills like pronunciation, English speaking, presentation skills, reading skills are made by the committee of teachers at the beginning of each academic year.
- The committee justifies and assesses the needs by searching the quality and choices of the students who want to seek their admission in various courses.

### **2.2.3. What are the strategies drawn and deployed by the institution to bridge the knowledge gap of the enrolled students to enable them to cope with the programme of their choice? (Bridge / Remedial / Add-on / Enrichment Courses, etc.)**

- Besides the traditional system of teaching, the institution has the strategies to bridge the knowledge gap of the students by supplementing alternative technique like Remedial courses and face to face interaction other than the use of internet and computers.

### **2.2.4. How does the college sensitize its staff and students on issues such as gender, inclusion, environment etc.?**

- The college makes aware its teaching and non-teaching staffs as well as students on the issues like gender inclusion, environmental awareness through N.S.S Programmes.
- The institution organizes workshops, delivering lectures and group discussions on the topics of awareness regarding environmental and gender inclusion.
- Persons working in this field, voluntary organizations working for awareness of the people on these issues are also invited to serve the purpose.

#### **2.2.5. How does the institution identify and respond to special educational/learning needs of advanced learners?**

- The events like “Bachhe Lal Jha Cricket sah Vishay Bastu Bodh Pratiyogita” and “Banshipati Singh Pratibha Purashkar Yojna” are organized by the institution on the occasion of College Day and Sankalp Diwas.
- On this occasion, guardians and other dignitaries of the locality are invited and advance learners and the winner of the respective competition are honored both in terms of certificates.
- Such efforts of the institution motivate students for healthy competition especially to those who have not got prizes.
- These efforts also motivate them in positive direction.
- The advance learners are also encouraged to work ahead by giving prizes and honor.
- Besides the lecture method of teaching each and every student is encouraged by tutorial classes.
- Class notes, teaching aids are also made available to them besides proper guidance of the teachers.

#### **2.2.6. How does the institute collect, analyze and use the data and information on the academic performance (through the programme duration) of the students at risk of drop out (students from the disadvantaged sections of society, physically challenged, slow learners, economically weaker sections etc.)?**

- The institution has not evolved such mechanism to collect data information of the academic performance of the students.

- The institution annually collects the data regarding the passing out and drop out for office purpose.
- Special focuses are given to the students belonging to the disadvantaged section of the society.
- Besides regular classes special classes are organized to keep them up at par with the advance learners.
- Data collected from the respective departments are used to know the number of drop out students.
- The institution makes plan to narrow down the number of drop out students. Guardian meetings are regularly conveyed and guardians are motivated to persuade their child to attend the classes regularly.
- These efforts of the institution have positive effects on the attendance of the students.

### **2.3. Teaching ? Learning Process:**

#### **2.3.1. How does the college plan and organise the teaching, learning and evaluation schedules? (Academic calendar, teaching plan, evaluation blue print, etc.)**

- The teaching plan of the college is based on the syllabus of the respective department.
- The syllabus is prepared by the Academic Council at the University level.
- The institution prepares a combined teaching routine and teaching is managed accordingly.
- The institution follows the academic calendar of the university.
- The institution has its own evaluation mechanism.
- Departments evaluate the learning of the students by interacting, periodical assessment and conducting examinations.

The various teaching-learning methods are as follows:

- Lecture method
- Interactive method

- Experimental learning (through practicals)
- Seminars/ workshops
- Assignments/ group discussions
- Project work/ field trip

### **2.3.2. How does IQAC contribute to improve the teaching ?learning process?**

- The IQAC reviews the teaching learning process of the institution regularly.
- The teaching learning process is discussed and constraints are sorted out.
- The IQAC has contributed a lot to attain quality bench mark of the academic and administrative activities of the institution.
- It has ensured continuous improvement in all the operational aspects of the institution.

### **2.3.3. How is learning made more student-centric? Give details on the support structures and systems available for teachers to develop skills like interactive learning, collaborative learning and independent learning among the students?**

- The college administration encourages and guides the teachers to make a teaching plan for all classes.
- Department-wise teaching plan is prepared and tutorial classes are managed.
- The institution encourages teachers by providing certificates for completing research work and getting Ph.D. and M.Phil degrees.
- The seminars, the case studies are conducted by different departmental council of the institution.
- Besides that internet connectivity, projector and alternative method of teaching are used.
- Teachers are also encouraged to participate in Conferences, Seminars and workshops organized at state or national level.



**2.3.4. How does the institution nurture critical thinking, creativity and scientific temper among the students to transform them into life-long learners and innovators?**

- The institution trains students in communication skills.
- The institution organizes essay writing competition, extempore lectures, debates, correct passage writing under various schemes running in the institution.
- These efforts develop creative and scientific temper among the students to transform themselves into life- long learner and innovator.

**2.3.5. What are the technologies and facilities available and used by the faculty for effective teaching? Eg: Virtual laboratories, e-learning - resources from National Programme on Technology Enhanced Learning (NPTEL) and National Mission on Education through Information and Communication Technology (NME-ICT), open educational resources, mobile education, etc.**

- Virtual laboratory, e-learning and open educational resources are used by the faculties for effective teaching.

**2.3.6. How are the students and faculty exposed to advanced level of knowledge and skills (blended learning, expert lectures, seminars, workshops etc.)?**

- Students and faculties are exposed to advance level of knowledge and skills by giving expert lectures and by way of participation in seminars and workshops.
- The institution encourages students to participate in such type of events to expose them to advance level of knowledge and expressive skills.
- To expose the communication skill of the students text reading and news paper readings, speaking English, developing conversation, writing conversation for an imaginary context, class room speaking practice are conducted.

**2.3.7. Detail (process and the number of students \ benefitted) on the academic, personal and psycho-social support and guidance services (professional onseling / mentoring / academic advise) provided to students?**

- Data not available.

**2.3.8. Provide details of innovative teaching approaches/methods adopted by the faculty during the last four years? What are the efforts made by the institution to encourage the faculty to adopt new and innovative approaches and the impact of such innovative practices on student learning?**

- The institution has encouraged faculty to adopt innovative methods of teaching besides traditional method.
- They use modern methods like internet, projector, audio-visual aids and other latest technological method.
- The institution encourages faculty to participate in refresher courses, orientation courses and workshops organized by U.G.C or university on innovative teaching methods.
- The impact of such innovative approaches has positive effect on the learners.

**2.3.9. How are library resources used to augment the teaching-learning process?**

- The college has a rich and well equipped library.
- Students use library to increase their knowledge.
- The college library is fully on automation mode. The students and faculty members avail themselves of internet facility.
- The reading room facility has been provided to both students and faculty members.
- The college library has a Book Bank facility for deprived students.

**2.3.10. Does the institution face any challenges in completing the curriculum within the planned time frame and calendar? If ?yes?, elaborate on the challenges encountered and the institutional approaches to overcome these.**

- The institution generally does not face such challenges.
- If the problem of incompleteness of curriculum arises before the institution special classes are organized to complete the curriculum within the stipulated time.
- Besides teachers put special efforts without remuneration.
- Teachers conduct special classes for slow learners to get them abreast with sufficient feedback.

### 2.3.11. How does the institute monitor and evaluate the quality of teaching learning?

- The institution monitors teaching learning through departmental councils.
- HODs of respective departments also monitor and evaluate the quality of teaching learning at the departmental level.
- In order to assess the progress written and oral examinations are conducted,
- Combined test examination is also organized at college level for assessing the knowledge and progress of the students.
- Whenever shortcomings come into the notice of institution, proper remedial steps are taken.
- Such exercises on the part of institution have the positive response on the teaching learning process.

## 2.4. Teacher Quality:

**2.4.1. Provide the following details and elaborate on the strategies adopted by the college in planning and management (recruitment and retention) of its human resource (qualified and competent teachers) to meet the changing requirements of the curriculum**

Highest qualification	Professor		Associate Professor		Assistant Professor		Total
	Male	Female	Male	Female	Male	Female	
Permanent teachers							
D.Sc./D.Litt.	0	0	0	0	0	0	0
Ph.D.	0	0	5	0	1	0	6
M.Phil.	0	0	0	0	0	0	0
PG	0	0	4	0	1	0	5
Temporary teachers							
Ph.D.	0	0	0	0	0	0	0
M.Phil.	0	0	0	0	0	0	0
PG	0	0	0	0	0	0	0
Part-time teachers							
Ph.D.	0	0	0	0	0	0	0
M.Phil.	0	0	0	0	0	0	0
PG	0	0	0	0	1	0	1

**2.4.2. How does the institution cope with the growing demand/ scarcity of qualified senior faculty to teach new programmes / modern areas (emerging areas) of study being introduced (Biotechnology, IT, Bioinformatics etc.)? Provide details on the efforts made by the institution in this direction and the outcome during the last three years.**

- The institution has no role in appointing qualified faculties to teach new programmes.
- Teachers are recruited on the requisition of the institution by the university on the recommendation of Bihar State University Service Commission.
- New post of teachers is created by the university under the established rule and regulation of the state government.

**2.4.3. Providing details on staff development programmes during the last four years elaborate on the strategies adopted by the institution in enhancing the teacher quality.**

a) Nomination to staff development programmes

Academic Staff Development Programmes	Number of faculty nominated
Refresher courses	1
HRD programmes	0
Orientation programmes	1
Staff training conducted by the university	0
Staff training conducted by other institutions	0
Summer / winter schools, workshops, etc.	0

b) Faculty Training programmes organized by the institution to empower and enable the use of various tools and technology for improved teaching- learning

- No such programmes are organized by the institution.

Teaching learning methods/approaches

Handling new curriculum

Content/knowledge management

Selection, development and use of enrichment materials

Assessment

Cross cutting issues

Audio Visual Aids/multimedia

OER's

Teaching learning material development, selection and use

c) Percentage of faculty

\* invited as resource persons in Workshops / Seminars / Conferences organized by external professional agencies

- 16.5%

\* participated in external Workshops / Seminars / Conferences recognized by national/ international professional bodies

-None

\* presented papers in Workshops / Seminars / Conferences conducted or recognized by professional agencies

**2.4.4. What policies/systems are in place to recharge teachers? (eg: providing research grants, study leave, support for research and academic publications teaching experience in other national institutions and specialized programmes industrial engagement etc.)**

- Study leave is granted to the teachers.

**2.4.5 Give the number of faculty who received awards / recognition at the state, national and international level for excellence in teaching during the last four years. Enunciate how the institutional culture and environment contributed to such performance/achievement of the faculty.**

- One faculty member has received the “Lok Bhasha Samman” by Bihar Rashtra Bhasha Prishad , Patna in 2011.

**2.4.6. Has the institution introduced evaluation of teachers by the students and external Peers? If yes, how is the evaluation used for improving the quality of the teaching-learning process?**

- Yes, the institution has the process of evaluating the teachers.

- A separate appraisal report is compulsory for all teachers and other faculty members as the feedback received by the principal.
- Principal submits a confidential report of each faculty members to the university.

## **2.5. Evaluation Process and Reforms:**

### **2.5.1. How does the institution ensure that the stakeholders of the institution especially students and faculty are aware of the evaluation processes?**

- The head of the institution collects feedbacks from the students and stakeholders regarding the performance of teachers inside and outside the class.
- Suggestions collected during guardian's meet at regular interval are processed and analyzed by the head of the institution.
- Head of the institution ensures that the development is in progress or otherwise. Accordingly, he enforces reforms in students.
- Student's meet is called at regular intervals. Their grudges are redressed at priority basis.
- Evaluation of teachers is also done by the Principal.

### **2.5.2. What are the major evaluation reforms of the university that the institution has adopted and what are the reforms initiated by the institution on its own?**

- At the behest of the university self appraisal report of teachers are in practice.
- The confidential report by the principal regarding the performance of teachers is sent to the university regularly.

### **2.5.3. How does the institution ensure effective implementation of the evaluation reforms of the university and those initiated by the institution on its own?**

The institution monitors the performance of the students in the following ways:

- Attendance records for the semester are displayed on the departmental notice boards. 75% attendance is mandatory for any student to take the annual exams.
- The answer scripts are also shown to the students to help them analyze their mistakes.

- Seminars held at the level of the department enable the students to make use of technology. Instant feedback is given by the faculty to make them aware of their shortcomings.
- Assignments and project works are evaluated by the teachers and necessary suggestions are given to the students.

**2.5.4. Provide details on the formative and summative evaluation approaches adapted to measure student achievement. Cite a few examples which have positively impacted the system.**

- The institution has adopted the formative and summative system of evaluation of the students.
- In formative system of evaluation the institution evaluates the performance of students through extempore lectures, debate, quiz, delivering lectures.
- As far as summative evaluation is concerned, the institution conducts annual/periodical examinations, essay competition, correct passage writing and through their practical classes.

**2.5.5. Enumerate on how the institution monitors and communicates the progress and performance of students through the duration of the course / programme? Provide an analysis of the students results / achievements (Programme / course wise for last four years) and explain the differences if any and patterns of achievement across the programmes / courses offered.**

- Institution monitors the progress of students by conducting annual/periodical examination.
- Departments evaluate progress on the basis of their results and their class attendance.
- Performance and achievements are communicated to the students by giving departmental appraisal report.

**Appraisal report of students during the last four years:****A. Ist Year: 2009 - 10**

Name of Course	Total appeared	Total Pass	Fail	Absent
B.A.Hons./Pass	129	121	8	0
B.Sc.Hons/Pass	3	3	0	0
B.Com.Hons/Pass	0	0	0	0

**B. IInd Year: 2010 - 11**

Name of Course	Total appeared	Total Pass	Fail	Absent
B.A.Hons./Pass	264	253	0	11
B.Sc.Hons/Pass	6	4	1	1
B.Com.Hons/Pass	0	0	0	0

**C. IIIrd Year: 2011 - 12**

Name of Course	Total appeared	Total Pass	Fail	Absent
B.A.Hons./Pass	255	219	0	34
B.Sc.Hons/Pass	6	6	0	0
B.Com.Hons/Pass	0	0	0	0

**D. IVth Year: 2012 - 13**

Name of Course	Total appeared	Total Pass	Fail	Absent
B.A.Hons./Pass	249	243	3	3
B.Sc.Hons/Pass	3	3	0	0
B.Com.Hons/Pass				

**2.5.6. Detail on the significant improvements made in ensuring rigor and transparency in the internal assessment during the last four years and weightages assigned for the overall development of students (weightage for behavioral aspects, independent learning, communication skills etc.**



- The institution does not officially communicate the results to the parents. However, plans are afoot to post the results on the college website so that the parents can find out about the performance of their wards.
- Field work/ projects are part of the practical exam papers of subjects such as Geography, Zoology, Botany, Psychology. Due weightages is given according to the distribution of marks as described in the syllabus.
- The enforcement of compulsory 75% attendance has brought satisfactory outcome in the presence and performance of the students in the final result.

**2.5.7. Does the institution and individual teachers use assessment/evaluation as an indicator for evaluating student performance, achievement of learning objectives and planning? If ?yes? provide details on the process and cite a few examples.**

- The institution has adopted the formative and summative system of evaluation of the students.
- Evaluated answer books are supplied to students and their shortcomings are pointed out to them.
- After the publication of final annual result, the principal discusses the achievement of the students with faculties.
- During the discussion proper teaching and learning plans are made.

**2.5.8. What are the mechanisms for redressal of grievances with reference to evaluation both at the college and University level?**

- If a student feels that the marks awarded are not up to his/her expectation he/she may apply for scrutiny in that paper with prescribed fee within 15 days of the declaration of results.
- Scrutiny implies re-totalling and checking of unevaluated parts only. It does not imply re-evaluation of the entire answer book.
- At institution level a separate grievance Cell exists for the redressa.

## **2.6. Student Performance and Learning Outcomes:**

### **2.6.1. Does the college have clearly stated learning outcomes? If ?yes? give details on how the students and staff are made aware of these?**

- The institution does not have any mechanism to keep the record of leaning outcomes of the student's performance in the different jobs.
- No such data is available to the college.

### **2.6.2. How are the teaching, learning and assessment strategies of the institution structured to facilitate the achievement of the intended learning outcomes?**

- The institution does not have any special strategies to facilitate the achievement of the intended learning outcomes.
- But U.G.C. sponsored programmes like Career & Counseling, entry in Services schemes help students in getting better placement in different jobs.

### **2.6.3. What are the measures / initiatives taken up by the institution to enhance the social and economic relevance (quality Jobs, entrepreneurship, innovation and research aptitude) of the courses offered?**

- Seeing the growing demands for skilled workers in the employment market, the institution trains the students by providing proper guidance.

### **2.6.4. How does the institution collect and analyze data on student learning outcomes and use it for planning and overcoming barriers of learning?**

- No such data is available to the institution.
- Institution monitors and looks into the performance and the progress of the learners.
- Whatever feedbacks received regarding progress and achievements are analyzed.
- After analyzing and finding out the weakness on students learning outcomes proper plans are made to overcome the barriers of learning.

### **2.6.5. How does the institution monitor and ensure the achievement of learning outcomes**

- All the faculties are assigned to monitor the learning outcomes of the students.
- They provide guidance on personal issues for the courses offered.

**2.6.6. What is the graduate attributes specified by the college / affiliating university?**

**How does the college ensure the attainment of these by the students?**

- The institution ensures the attainment of graduate attributes by inculcating discipline, sincerity and culture.
- To ensure the attainment, the institution provides some social and cultural training through various schemes financed by different donors.

**Any other relevant information regarding Teaching-Learning and Evaluation which the college would like to include.**

### CRITERION III: RESEARCH, CONSULTANCY AND EXTENSION

#### **3.1. Promotion of Research:**

**3.1.1. Does the institution have recognized research center/s of the affiliating University or any other agency/organization?**

- No,

**3.1.2. Does the Institution have a research committee to monitor and address the issues of research? If so, what is its composition? Mention a few recommendations made by the committee for implementation and their impact.**

- No,

**3.1.3. What are the measures taken by the institution to facilitate smooth progress and implementation of research schemes/projects?**

- autonomy to the principal investigator -No
- timely availability or release of resources -Yes
- adequate infrastructure and human resources -No
- time-off, reduced teaching load, special leave etc. to teachers special leave is granted after the approval of university. -Yes,
- support in terms of technology and information needs-Yes
- facilitate timely auditing and submission of utilization certificate to the funding authorities -Yes
- any other

**3.1.4. What are the efforts made by the institution in developing scientific temper and research culture and aptitude among students?**

- Research aptitude is also developed among UG students through Project Work/Seminars and Workshops.
- In some Science subjects like Botany, Psychology and Zoology project work is an essential part of the curriculum.

- UG students are also encouraged to present a paper /topic in seminar/symposia organized at departmental level.

**3.1. 5. Give details of the faculty involvement in active research (Guiding student research, leading Research Projects, engaged in individual / collaborative research activity, etc.**

- Faculties of the institution are actively engaged either in individual research work or guiding student research.
- Prof. Umar Farooque, Asst.Professor Dept. of English is engaged in individual research activity for obtaining Ph.D. degree.
- Three teachers, namely, Dr. Phool Chandra Mishra 'Raman' Professor, Dept. of Sanskrit, Dr. Shubhkant Chaudhary, Associate Professor, Dept. of Hindi, Dr. Madan Jha, Associate Professor, Dept. of Botany and Dr. Umesh Kumar Chaudhary, Asst. Professor, dept. of Philosophy are involved in guiding student research.

**3.1.6. Give details of workshops / training programmes / sensitization programmes conducted / organized by the institution with focus on capacity building in terms of research and imbibing research culture among the staff and students.**

- No such programmes have been conducted or organized by the institution.

**3.1.7. Provide details of prioritised research areas and the expertise available with the institution.**

- No such priorities research area and the expertise is available with the institution.

**3.1.8. Enumerate the efforts of the institution in attracting researchers of eminence to visit the campus and interact with teachers and students?**

- Dr. Yogendra Pathak 'Viyogi', eminent scientist and scholar formerly at Bhabha Atomic Research Institute, Bombay, visited the campus and interacted with the teachers and the students.

**3.1.9. What percentage of the faculty has utilized Sabbatical Leave for research activities? How has the provision contributed to improve the quality of research and imbibe research culture on the campus?**

- No such type of sabbatical has been utilized by any faculty members during last four years.

**3.1.10. Provide details of the initiatives taken up by the institution in creating awareness/advocating / transfer of relative findings of research of the institution and elsewhere to students and community (lab to land)**

- No such type of initiative has been taken by the institution.

**3.2. Resource Mobilization for Research:**

**3.2.1. What percentage of the total budget is earmarked for research? Give details of major heads of expenditure, financial allocation and actual utilization.**

- No allocation is made in this regard.

**3.2.2. Is there a provision in the institution to provide seed money to the faculty for research? If so, specify the amount disbursed and the percentage of the faculty that has availed the facility in the last four years?**

- No provision in the institution to provide seed money to the faculty for research.

**3.2.3. What are the financial provisions made available to support student research projects by students?**

- No such provision is made to support student research projects.

**3.2.4. How does the various departments / units / staff of the institute interact in undertaking inter-disciplinary research? Cite examples of successful endeavors and challenges faced in organizing interdisciplinary research.**

- No such inter-disciplinary research is organized at the college level.

**3.2.5. How does the institution ensure optimal use of various equipment and research facilities of the institution by its staff and students?**

- The institution is not a research centre.

**3.2.6. Has the institution received any special grants or finances from the industry or other beneficiary agency for developing research facility? If ?yes? give details.**

- No, the institution did not receive any grant or finances from the industry or other beneficiary agency.

**3.2.7. Enumerate the support provided to the faculty in securing research funds from various funding agencies, industry and other organisations. Provide details of ongoing and completed projects and grants received during the last four years.**

Nature of the Project	Duration Year From To	Title of the project	Name of the funding agency	Total grant		Total grant received till date
				Sanctioned	Received	
Minor projects	22.12.2008 to 22.12.2010	Factorial study of organisational citizenship behaviour	UGC	77500	48750	48750
Major projects						
Interdisciplinary projects						

Nature of the Project	Duration Year From To	Title of the project	Name of the funding agency	Total grant		Total grant received till date
				Sanctioned	Received	
Industry sponsored						
Students' research projects						

Any other (specify)						

### **3.3. Infrastructure for Research:**

#### **3.3.1. What are the research facilities available to the students and research scholars within the campus?**

- Free access to Library, Wi-Fi, Laboratories, assistance and supervision, if necessary.

#### **3.3.2. What are the institutional strategies for planning, upgrading and creating infrastructural facilities to meet the needs of researchers especially in the new and emerging areas of research?**

- The institution is not a recognized research centre.
- Though the institution is making efforts to develop and upgrade infrastructural facilities for the purpose.

#### **3.3.3. Has the institution received any special grants or finances from the industry or other beneficiary agency for developing research facilities?? If ?yes?, what are the instruments / facilities created during the last four years.**

- The institution has not received any special grant or financial assistance from any agency for the development of research facility.

#### **3.3.4. What are the research facilities made available to the students and research scholars outside the campus / other research laboratories?**

- Willing research scholars seek the help of university library and P.G.laboratories.
- The institution has only provided library facility to the research scholars in the campus.

#### **3.3.5. Provide details on the library / information resource centre or any other facilities available specifically for the researchers?**



- The institution has a rich library having a lot of reference books, journals and magazines.
- The institution has a research centre named “Dharmanand Shodh Peeth” to encourage research work in Maithili literature.
- Information resources like internet with Wi-Fi connectivity has been made available inside the library. Researchers may use these facilities.

**3.3.6. What are the collaborative researches facilities developed / created by the research institutes in the college? For ex. Laboratories, library, instruments, computers, new technology etc.**

- The institution has developed the library for this purpose.
- Laboratories of different departments are not so developed to be used for research work but available infrastructures are being updated for this purpose.
- Library and other departments of the institution have been made fully computerized with WiFi and internet connectivity.

### **3.4. Research Publications and Awards:**

**3.4.1. Highlight the major research achievements of the staff and students in terms of -**

- \* Patents obtained and filed (process and product) - No
- \* Original research contributing to product improvement - No
- \* Research studies or surveys benefiting the community or improving the services - Yes
- \* Research inputs contributing to new initiatives and social development - No

**3.4.2. Does the Institute publish or partner in publication of research journal(s)? If yes?, indicate the composition of the editorial board, publication policies and whether such publication is listed in any international database?**

- No.

### 3.4.3. Give details of publications by the faculty and students:

\* Publication per faculty-

- English- 2 (Two)
- Maithili- 9 (nine)

\* Number of papers published by faculty and students in peer reviewed Journals (national / international)-

- National- 5
- International-1

\* Number of publications listed in International Database (for Eg: Web of Science, Scopus, Humanities International Complete, Dare Database - International Social Sciences Directory, EBSCO host, etc.)-

- None

\* Monographs- 1 (One)

\* Chapter in Books 14 (Fourteen)

\* Books Edited 5 (Five)

\* Books with ISBN/ISSN numbers with details of publishers- One

\* Citation Index 1 (One)

\* SNIP -None

\* SJR -None

\* Impact factor -None

\* h-index -None

### 3.4.4. Provide details (if any) of -

\* research awards received by the faculty -None

\* recognition received by the faculty from reputed professional bodies and agencies, nationally and internationally -None

\* incentives given to faculty for receiving state, national and international recognitions for research contributions. -None

**3.5. Consultancy:**

**3.5.1. Give details of the systems and strategies for establishing institute-industry interface?**

- There is no provision of consultancy.

**3.5.2. What is the stated policy of the institution to promote consultancy? How is the available expertise advocated and publicized?**

- No.

**3.5.3. How does the institution encourage the staff to utilize their expertise and available facilities for consultancy services?**

- No.

**3.5.4. List the broad areas and major consultancy services provided by the institution and the revenue generated during the last four years.**

- No.

**3.5.5. What is the policy of the institution in sharing the income generated through consultancy (staff involved: Institution) and its use for institutional development?**

- NA

**3.6. Institutional Social Responsibility (ISR) and Extension Activities:**

**3.6.1. How does the institution promote institution-neighborhood-community network and student engagement, contributing to good citizenship, service orientation and holistic development of students?**

- During the last four years about 100 N.S.S cadets participated in camps during the referred period.
- In course of these camps the cadets have had active community interaction. They served the community in areas of health and hygiene, literacy etc.

**3.6.2. What is the Institutional mechanism to track students? involvement in various social movements / activities which promote citizenship roles?**

- The institution has a number of extensions programmes.
- The institution organizes medical camps, blood donation camps, aids awareness programmes and environment awareness.
- Such camps are organized in and outside of the institution to make people acquainted with the benefits and consequences as well as the impact of these programmes on the society.

**3.6.3. How does the institution solicit stakeholder perception on the overall performance and quality of the institution?**

- The institution solicits stakeholder perception by inviting them in the camps organized by the N.S.S.

**3.6.4. How does the institution plan and organize its extension and outreach programmes? Providing the budgetary details for last four years, list the major extension and outreach programmes and their impact on the overall development of students.**

- The institution plans and organizes its extension and outreach programmes through N.S.S.
- The institution has no budgetary provision for the major extension and outreach programmes.
- The university provides funds for organizing such programmes through N.S.S.
- The college generates resources through students as per the guidelines of the university.
- Details are as :-

Years	Grants from University	Resources from the college
2010	00	22090.00
2011	2500.00	22520.00
2012	44500.00	25950.00
2013	2500.00	32240.00

- It has a positive impact on the overall quality and skill development of the students.

**3.6.5. How does the institution promote the participation of students and faculty in extension activities including participation in NSS, NCC, YRC and other National/ International agencies?**

- The institution has only NSS unit comprising of 100 students.
- The institution has appointed a full time faculty member as a programme officer with the prior approval of the university.
- The programme officer monitors and promotes the extension activities inside and outside of the campus.

**3.6.6. Give details on social surveys, research or extension work (if any) undertaken by the college to ensure social justice and empower students from under-privileged and vulnerable sections of society?**

- The institution organizes social surveys through dept. of sociology and NSS on the different aspects like social justice and empowerment of students from under-privileged and vulnerable section of society.

**3.6.7. Reflecting on objectives and expected outcomes of the extension activities organized by the institution, comment on how they complement students' academic learning experience and specify the values and skills inculcated.**

- Students are inculcated through extension activities the moral value of real life.
- They complement their academic learning experience in social life, thereby serving the nation and humanity at large by providing good moral citizens.
- Students and cadets are trained to face the challenges, like flood, earthquake and other natural calamities.

**3.6.8. How does the institution ensure the involvement of the community in its reach out activities and contribute to the community development? Detail on the initiatives of the institution that encourage community participation in its activities?**

- The institution ensures the involvement of the community by aids awareness and environment awareness programmes.
- Medical camps are organized in the campus with the association of different NGOs.

**3.6.9. Give details on the constructive relationships forged (if any) with other institutions of the locality for working on various outreach and extension activities.**

- The institution has no such constructive relationship with the other institution of the locality.

**3.6.10. Give details of awards received by the institution for extension activities and / contributions to the social / community development during the last four years.**

- The institution did not receive any award for extension activities.

### **3.7. Collaborations:**

**3.7.1. How does the institution collaborate and interact with research laboratories, institutes and industry for research activities. Cite examples and benefits accrued of the initiatives - collaborative research, staff exchange, sharing facilities and equipment, research scholarships etc.**

- The institution does not collaborate and interact with research laboratories, institutes and industry for research activities.

**3.7.2. Provide details on the MoUs / collaborative arrangements (if any) with institutions of national importance/other universities/ industries/Corporate (Corporate entities) etc. and how they have contributed to the development of the institution.**

- The MoUs / collaborative arrangements with the institution did not contribute to the development of the institution.

**3.7.3. Give details (if any) on the industry-institution-community interactions that have contributed to the establishment / creation/up-gradation of academic facilities, student and staff support, infrastructure facilities of the institution viz. laboratories / library/ new technology /placement services etc.**

- The institution does not have such facility.

**3.7.4. Highlighting the names of eminent scientists/participants who contributed to the events, provide details of national and international conferences organized by the college during the last four years.**

- The institution did not organize such events during the last four years.

**3.7.5. How many of the linkages / collaborations have actually resulted in formal MoUs and agreements? List out the activities and beneficiaries and cite examples (if any) of the established linkages that enhanced and/or facilitated ?**

- NA
  - a) Curriculum development /enrichment
  - b) Internship / On-the-job training
  - c) Summer placement
  - d) Faculty exchange and professional Development
  - e) Research
  - f) Consultancy
  - g) Extension
  - h) Publication
  - i) Student Placement
  - j) Twinning programmes
  - k) Introduction of new Courses
  - l) Student exchange
  - m) Any other

**3.7.6. Detail on the systemic efforts of the institution in planning, establishing and implementing the initiatives of the linkages/collaborations.**

- No such efforts are made in this regard.

**Any other relevant information regarding Research, Consultancy and Extension which the college would like to include.**

## CRITERION IV: INFRASTRUCTURE AND LEARNING RESOURCES

### 4.1. Physical Facilities:

#### 4.1.1. What is the policy of the Institution for creation and enhancement of infrastructure that facilitate effective teaching and learning?

- The institution has a development committee to create and enhance the infrastructure.
- The committee assesses the needs and requisition of the respective constituent of the institution.
- Departments, library and office assess their needs at their own level. Keeping in view the number of students and the new courses introduced.
- All the infrastructural needs are processed through development committee, building committee, library committee and purchase committee in order to facilitate effective teaching and learning.

#### 4.1.2. Detail the facilities available for -

##### a) Curricular and co-curricular activities - classrooms, technology enabled learning spaces, seminar halls, tutorial spaces, laboratories, botanical garden, Animal house, specialized facilities and equipment for teaching, learning and research etc.

• Class Room-	11
• Technology enabled learning spaces-	01
• Seminar Hall	01
• Tutorial Spaces	04
• Laboratories	05
• Botanical Garden	02
• Animal House	0
• Specialized facilities Projector	02



**b) Extra - curricular activities - sports, outdoor and indoor games, gymnasium, auditorium, NSS, NCC, cultural activities, Public speaking, communication skills development, yoga, health and hygiene etc.**

- Sports (Outdoor and Indoor) game facility available
- NSS- Available
- Cultural Activities- Shon-Shiv Cultural Programme
- Communication Skill Development- Mobarak Prize Fund, Banhipati Singh Pratibha Purashkar.
- Yoga- At regular interval yoga classes are organized.
- Health & Hygiene- Through Health Centre.

**4.1.3. How does the institution plan and ensure that the available infrastructure is in line with its academic growth and is optimally utilized? Give specific examples of the facilities developed / augmented and the amount spent during the last four years (Enclose the Master Plan of the Institution/ campus and indicate the existing physical infrastructure and the future planned expansions if any).**

- The IQAC suggests the Planning Board of the college resolve and execute the necessary infrastructural innovations.
- Once a certain facility is installed the IQAC ensures that the facility is subjected to optimal use within the campus.
- As such, facilities for pure drinking water, Wi-Fi connectivity, sports activity, girl's hostel, girl's common room, toilet, stand by electricity with generator, automation of library, fencing of botanical garden, grilling of upper floor etc have come up during the last four years.
- Up gradation of class rooms, banking facility (ATM), canteen facility, student's cycle shed solar lighting facility etc.
- Annexure of master plan is to be included.
- The future plan of the institution is as-

**Construction of Reading Room-**

- Construction of Girl's Common Room
- Construction of Boy's Common Room
- Construction of Administrative Building
- Construction of Cycle Shed
- Construction of Urinals.

**Amount spent during the last four years-**

Expenditure	2009-10	2010-11	2011-12	2012-13
Furniture	86656	0	67538	151465
Building	197590	1167840	592891	0
Computer	0	0	2756437	0
Books & Journals	418525	18095	171377	51115
Electricity	13526	10088	7420	6106

**4.1.4. How does the institution ensure that the infrastructure facilities meet the requirements of students with physical disabilities?**

- Ramps have been constructed in all the blocks and classes are organized on ground floor for the differently abled students.

**4.1.5. Give details on the residential facility and various provisions available within them:****Hostel Facility ? Accommodation available**

- Girl's Hostel- 25 intake capacity but still in construction.
- Boy's Hostel- 32 intake capacity still residing.

**Recreational facilities, gymnasium, yoga center, etc.**

- Recreational facility available
- Yog centre.

**Computer facility including access to internet in hostel**

- No computer facility including access to internet in hostel.

**Facilities for medical emergencies**

- Yes.

**Library facility in the hostels**

- No

**Internet and Wi-Fi facility**

- Internet and Wi-Fi facility available in the campus

**Recreational facility-common room with audio-visual equipments**

- No such facility in the campus.

**Available residential facility for the staff and occupancy**

- No residential facility for the staff in the campus.

**Constant supply of safe drinking water**

- Yes, constant supply of safe drinking water in the campus.

**Security**

- 24 hours security is available in the campus.

**4.1.6. What are the provisions made available to students and staff in terms of health care on the campus and off the campus?**

- The institution provides health facilities to the students, faculties and staffs.
- The institution has appointed a part-time doctor on the campus and off the campus.

**4.1.7. Give details of the Common Facilities available on the campus - spaces for special units like IQAC, Grievance Redressal unit, Women's Cell, Counseling and Career Guidance, Placement Unit, Health Centre, Canteen, recreational spaces for staff and students, safe drinking water facility, auditorium, etc.**

- IQAC – one room
- Counseling career guidance & placement – one room
- Health centre – one room
- Canteen – one

- Re-creative room for staff – staff common room
- For students – common room Boys & Girls
- Safe drinking water facility – for both staff and students is available.
- Auditorium - No

## **4.2. Physical Facilities:**

### **4.2.1. Does the library have an Advisory Committee? Specify the composition of such a committee. What significant initiatives have been implemented by the committee to render the library, student / user friendly?**

- Yes
- The Library Advisory Committee comprises of-
 

Principal-	-Chairman
Burser	-Member
Prof. in charge Library	-Member
All the Heads of department	-Member
Librarian	-Secretary
- The Committee has taken a significant initiative towards computerization and automation of the library for easy and free access.

### **4.2.2. Provide details of the following:**

- Total area of the library (in Sq. Mts.) - 2101.2 sq.mtrs.
- Total seating capacity - 50
- Working hours (on working days, on holidays, before examination days, during examination days, during vacation) - 7 hrs.
- Layout of the library (individual reading carrels, lounge area for browsing and relaxed reading, IT zone for accessing e-resources) - 2150 sq.mtrs.

**4.2.3. How does the library ensure purchase and use of current titles, print and e-journals and other reading materials? Specify the amount spent on procuring new books, journals and e-resources during the last four years.**

- Through Library Committee

Library holdings	Year -1		Year - 2		Year - 3		Year - 4	
	Number	Total Cost	Number	Total Cost	Number	Total Cost	Number	Total Cost
Text books	1319	402246	200	106276	978	240142	146	32162
Reference Books	146	54693	23	12098	108	26682	0	0

Library holdings	Year -1		Year - 2		Year - 3		Year - 4	
	Number	Total	Number	Total	Number	Total	Number	Total
Journal/Periodical	15	2500	20	5450	25	6540	30	10250
e-resources	0	0	0	0	0	0	0	0
Any other	0	0	0	0	0	0	0	0

**4.2.4. Provide details on the ICT and other tools deployed to provide maximum access to the library collection? OPAC**

- No

- Electronic Resource Management package for e-journals - No
- Federated searching tools to search articles in multiple databases - No
- Library Website - No
- In-house/remote access to e-publications - No
- Library automation - Yes
- Total number of computers for public access - 0
- Total numbers of printers for public access - 0
- Internet band width/ speed 2mbps 10 mbps 1 gb (GB)

- 100 mbps. (Broadband)-BSNL

- Institutional Repository - No
- Content management system for e-learning - No
- Participation in Resource sharing networks/consortia (like Inflibnet) - No

#### 4.2.5. Provide details on the following items:

- Average number of walk-ins - 80 per day
- Average number of books issued/returned - 35 issued &  
30 returned
- Ratio of library books to students enrolled 1 : 9
- Average number of books added during last three years - 384 books
- Average number of login to opac (OPAC) - Digitalized
- Average number of login to e-resources - NA
- Average number of e-resources downloaded/printed - NA
- Number of information literacy trainings organized - NA
- Details of “weeding out” of books and other materials-  
Books- 249, Magazine-172, Other materials- 96

#### 4.2.6. Give details of the specialized services provided by the library

- Manuscripts - 20
- Reference - 2194
- Reprography - 0
- ILL (Inter Library Loan Service) - NA

#### Information deployment and notification (Information Deployment and Notification)

- Download -Yes
- Printing -Yes

- Reading list/ Bibliography compilation - Yes
- In-house/remote access to e-resources - No
- User Orientation and awareness - Yes
- Assistance in searching Databases - Yes
- INFLIBNET/IUC facilities - No

**4.2.7. Enumerate on the support provided by the Library staff to the students and teachers of the college.**

- The Library staff provides a cordial support to the students and teachers.

**4.2.8. What are the special facilities offered by the library to the visually/physically challenged persons? Give details.**

- All sorts of special assistance is provided to visually & physically challenged persons.
- IQAC has suggested the purchase of books in brail script.

**4.2.9. Does the library get the feedback from its users? If yes, how is it analyzed and used for improving the library services. (What strategies are deployed by the Library to collect feedback from users? How is the feedback analyzed and used for further improvement of the library services?).**

- Yes.
- Through our complain box, Visitor's register and oral suggestions, the feedback are collected.
- The feedback collected from the library user, the library committee scrutinizes and acts accordingly for improving library service.

### **4.3. IT Infrastructure:**

**4.3.1. Give details on the computing facility available (hardware and software) at the institution.**

- Number of computers with Configuration (provide actual number with exact configuration of each available system)
  - 12 Computers- All the Computer system Lenovo - Pentium 4 Dual Core with 2GB RAM and 500 HDD.
  - 2 Computers with Pentium- III IBM
  - 3 Laptop with latest version.
- Computer-student ratio - 1 : 200
- Stand alone facility - 15
- LAN facility - 10 Broadband connection with 100 mbps
- WiFi facility - Available within the campus
- Licensed software - 10
- Number of nodes/ computers with Internet facility - 10
- Any other

**4.3.2. Detail on the computer and internet facility made available to the faculty and students on the campus and off-campus?**

- Only for the faculty members inside the campus.

**4.3.3. What are the institutional plans and strategies for deploying and upgrading the IT infrastructure and associated facilities?**

- Laptops & Computers to be provided to faculty members working on Major / Minor research projects and setting up of e-learning facility in the campus.

**4.3.4. Provide details on the provision made in the annual budget for procurement, upgradation, deployment and maintenance of the computers and their accessories in the institution (Year wise for last four years)**



- From UGC development grants, new computers have been purchased during previous years.
- Maintenance of the computers and their accessories are met with college contingency.
- From NRC fund once college received 10000.00 for its maintenance.

**4.3.5. How does the institution facilitate extensive use of ICT resources including development and use of computer-aided teaching/ learning materials by its staff and students?**

- The faculty members and students use the computer aided material through internet facility.

**4.3.6. Elaborate giving suitable examples on how the learning activities and technologies deployed (access to on-line teaching - learning resources, independent learning, ICT enabled classrooms/learning spaces etc.) by the institution place the student at the centre of teaching-learning process and render the role of a facilitator for the teacher.**

- The students are allowed to use the internet for their requirements.
- The institution does not have the facility of online teaching and learning. In this process the teacher assists the students.

**4.3.7. Does the Institution avail of the National Knowledge Network connectivity directly or through the affiliating university? If so, what are the services availed of?**

- No such service is availed by the institution.

#### **4.4. IT Infrastructure:**

**4.4.1. How does the institution ensure optimal allocation and utilization of the available financial resources for maintenance and upkeep of the following facilities (substantiate your statements by providing details of budget allocated during last four years)?**

ITEMS	2009-10	2010-11	2011-12	2012-13
Building	197590	1167840	592891	0
Furniture	86656	0	67538	151465
Equipment	0	219380	280000	0
Computers	0	0	2756437	0
Vehicles	0	0	0	0
Any other- Electricity/Gen Set	13526	10088	75920	6106

**4.4.2. What are the institutional mechanisms for maintenance and upkeep of the infrastructure, facilities and equipment of the college?**

- An Advisory Committee of the institution plans and ensures proper maintenance and upkeep of the infrastructure and equipments.

**4.4.3. How and with what frequency does the institute take up calibration and other precision measures for the equipment/instruments?**

- The departments concerned check all the equipments/instruments once in a month wherever necessary.

**4.4.4. What are the major steps taken for location, upkeep and maintenance of sensitive equipment (voltage fluctuations, constant supply of water etc.)?**

- CVT is used to stabilize the fluctuation of voltage for sensitive equipments.
- The institution provides the constant water supply.

**Any other relevant information regarding Infrastructure and Learning Resources which the college would like to include.**

## CRITERION V: STUDENT SUPPORT AND PROGRESSION

### **5.1. Student Mentoring and Support:**

**5.1.1. Does the institution publish its updated prospectus / handbook annually? If ?yes?, what is the information provided to students through these documents and how does the institution ensure its commitment and accountability?**

- Yes, the institution publishes its updated prospectus and annual Handbook which contains latest status of the course, faculties, fee structures, committees, about free student ship.
- The institution ensures its commitment and accountability through the documents

**5.1.2. Specify the type, number and amount of institutional scholarships / freeships given to the students during the last four years and whether the financial aid was available and disbursed on time?**

- Welfare Stipend, UGC stipend, Merit Scholarship and Institutional Freeship have been provided to the economically weaker general section of the society, SC/ST/Minorities and OBC students.
- Detail of the scholarship and free ship provided to the students during the last four years is as-

2009-10:	68399.00
2010-11:	14300.00
2011-12:	101300.00
2012-13:	3835.00

The financial aid received from the different agencies has been disbursed and made available to the students during those periods.

**5.1.3. What percentage of students receives financial assistance from state government, central government and other national agencies?**

- The percentage of students received financial assistance from the state government, central government and other national agencies is as-

<b><u>Assistance Received</u></b>	<b><u>2010</u></b>	<b><u>2011</u></b>	<b><u>2012</u></b>	<b><u>2013</u></b>
State Government-	8.7%	0.76%	7.3%	0.12%
Central Government-	2.1%	0	0.2%	0
Other Agencies-UGC	00	10.45%	13.3%	0

#### **5.1.4. What are the specific support services/facilities available for Students from SC/ST, OBC and economically weaker sections?**

- Through the Remedial courses, Entry in Service Schemes, Career & Counseling Cell, Free Student ship, students from SC/ST, OBC and economically weaker section get support.

#### **Students with physical disabilities:**

- Students with physically disabilities get admission reservation, free student ship, relaxation in books.
- Ramps are also provided to them.

#### **Overseas students:**

- There is no support provision to overseas students.

#### **Students to participate in various competitions / National and International:**

- The institution provides financial assistance to the students who participate in different competitions.

#### **Medical assistance to students: health centre, health insurance etc.**

- The institution provides medical assistance through its Health Centre with qualified doctors to the students.
- The institution does not provide health insurance to the students.

#### **Organizing coaching classes for competitive exams:**

- The institution organizes Remedial Coaching classes, Entry in Service Coaching Classes and Career & Counseling for competitive exams for the SC/ST/Minorities and OBC students.

**Skill development (Spoken English, Computer literacy, etc.):**

- For skill development the institution conducts English spoken classes and computer literacy programmes under the umbrella of Career & Counseling Schemes and Entry in Services Schemes.

**Support for ?slow learners?:**

- For slow learners, the institution provides special support through its faculty members.
- The faculty members give special attention to those students in and after the classes. Special tutorial classes are organized for them.

**Exposures of students to other institution of higher learning / corporate / business house etc.:**

- No such facility is available.

**Publication of student magazines:**

- No student magazine is published from the institution.
- Students get the opportunity for their writing through the College Magazine.

**5.1.5. Describe the efforts made by the institution to facilitate entrepreneurial skills, among the students and the impact of the efforts.**

- The career and Counseling Cell regularly holds Workshops and Seminars where the resource persons explain the various ways of developing entrepreneurship.
- As a result, most of the students find their way of self employment and trade.

**5.1.6. Enumerate the policies and strategies of the institution which promote participation of students in extracurricular and co-curricular activities such as sports, games, Quiz competitions, debate and discussions, cultural activities etc.**

- The institution adopts the following policies and strategies to promote the students in extracurricular activities and sport :-
- Mobarak Prize Fund- Debate and discussion

- Banshpati Singh Pratibha Purashkar- Quiz, G.K. Correct writing, Painting, Embroidery etc.
- Shonshiv Sanskritik Purashkar- In cultural activities like Classical songs, Folk Songs, Dance, Caricature, Fancy Dress Competition.
- Bachhelal Jha Cricket Sah Vishay Bastu Bodh Purashkar- Cricket and essay writing.
- Annual Sports & Games- For promoting games and Sports.

#### **Additional academic support, flexibility in examinations**

- Under the auspices of Dharmand Purashkar, students are awarded for their regular attendance in classes and performance in examination.
- Under the banner of Sarswati Nandan Singh samajik Purashkar, students are invited to take part in essay competition, social services and awarded prizes annually.

#### **Special dietary requirements, sports uniform and materials**

- No dietary provision is available
- Sports uniform and other materials are provided to the students.

#### **Any other**

**5.1.7. Enumerating on the support and guidance provided to the students in preparing for the competitive exams, give details on the number of students appeared and qualified in various competitive exams such as UGC-CSIR-NET, UGC-NET, SLET, ATE / CAT / GRE / TOFEL / GMAT / Central State services, Defense, Civil Services, etc**

- Facility not available.

**5.1.8. What type of counseling services are made available to the students (academic, personal, career, psycho-social etc.)?**

- Counseling services are made available to the students through Career & Counseling Cell.

**5.1.9. Does the institution have a structured mechanism for career guidance and placement of its students? If ?yes?, detail on the services provided to help**

**students identify job opportunities and prepare themselves for interview and the percentage of students selected during campus interviews by different employers (list the employers and the programmes).**

- No such mechanism is available

**5.1.10. Does the institution have a student grievance redressal cell? If yes, list (if any) the grievances reported and redressed during the last four years.**

- Yes, the institution has a Student Grievance Redressal Cell.
- During the last four years, four cases reported and redressed accordingly.

**5.1.11. What are the institutional provisions for resolving issues pertaining to sexual harassment?**

- The disciplinary committee of the institution is competent to resolve the issues pertaining to sexual harassment.
- No such cases reported during the last four years.

**5.1.12. Is there an anti-ragging committee? How many instances (if any) have been reported during the last four years and what action has been taken on these?**

- Yes, there is an anti-ragging committee in the campus.
- No such occurrence has taken place during the last four years.

**5.1.13. Enumerate the welfare schemes made available to students by the institution.**

- The welfare schemes are made available to the students in forms of Stipend, Poor Boy's Fund, hostel facility, canteen facility, health facility etc.

**5.1.14. Does the institution have a registered Alumni Association? If ?yes?, what are its activities and major contributions for institutional, academic and infrastructure development?**

- Yes, there is an Alumni Association in the institution.

- The alumni association has made a commendable contribution in the institution for institutional and infrastructural development in form of providing Urinal facility
- For academic development, the alumni association guides and motivates the students for competitive exam.

## **5.2. Student Progression:**

### **5.2.1. Providing the percentage of students progressing to higher education or employment (for the last four batches) highlight the trends observed.**

Student progression-2009-2010	%
UG to PG	15%
PG to M.Phil.	0
PG to Ph.D.	0
Employed <ul style="list-style-type: none"> <li>• Campus selection</li> <li>• Other than campus recruitment</li> </ul>	data not available

Student progression- 2010-11	%
UG to PG	18%
PG to M.Phil.	0
PG to Ph.D.	0
Employed <ul style="list-style-type: none"> <li>• Campus selection</li> <li>• Other than campus recruitment</li> </ul>	data not available
Student progression- 2011-12	%
UG to PG	20% appr.
PG to M.Phil.	0
PG to Ph.D.	0
Employed <ul style="list-style-type: none"> <li>• Campus selection</li> <li>• Other than campus recruitment</li> </ul>	data not available



Student progression- 2012-13	%
UG to PG	25% appr.
PG to M.Phil.	0
PG to Ph.D.	0
Employed <ul style="list-style-type: none"> <li>• Campus selection</li> <li>• Other than campus recruitment</li> </ul>	data not available

The trend observed during the mentioned period that the progress of students from U.G. to P.G. is increasing.

**5.2.2. Provide details of the programme wise pass percentage and completion rate for the last four years (cohort wise/batch wise as stipulated by the university)? Furnish programme-wise details in comparison with that of the previous performance of the same institution and that of the Colleges of the affiliating university within the city/district.**

Following is the detail of the programme wise pass percentage during the last four years:-

Year	Programmes	Appeared	Pass	Percentage
2009-10	B.A.(H/Gen)	129	121	93.8%
	B.Sc.(H/Gen)	03	03	100%
2010-11	B.A.(H/Gen)	262	253	96.6%
	B.Sc.(H/Gen)	06	04	66.7%
2011-12	B.A.(H/Gen)	255	219	85.9%
	B.Sc.(H/Gen)	06	04	66.7%
2012-13	B.A.(H/Gen)	249	243	97.6%
	B.Sc.(H/Gen)	03	03	100%

- Completion Rate of Arts & Science during the last four years as-

2010-	96.9 %
2011-	81.7 %
2012-	76.3 %
2013-	98.8 %

- Data of other colleges of the district is not available for comparison.

### **5.2.3. How does the institution facilitate student progression to higher level of education and / or towards employment?**

- The institution facilitates and motivates students for higher level of education and job oriented courses.
- Through entry in service schemes and Career & Counseling schemes, students are motivated for employment.

### **5.2.4. Enumerate the special support provided to students who are at risk of failure and drop out?**

- The special support is provided by the institution to students who are at the risk of failure and drop out.
- The institution provides support through Remedial and Tutorial classes.

## **5.3. Student Participation and Activities:**

### **5.3.1. List the range of sports, games, cultural and other extracurricular activities available to students. Provide details of participation and program calendar.**

The range of games and sports, cultural, extracurricular activities which the college provides to the students is as-

- Athletics: 100 m, 200m, 400 m, 800 m, 1500 m, 5000 m, 10,000 m, Relay Race, Hurdle race
- Jump: High, long and triple jump
- Throw: Discuss, Javelin, Hammer,
- Games:  
 Outdoor – Football, Cricket, Volley ball, Kabbadi  
 Indoor - Badminton, Chess, Carom
- Cultural & Fine Arts - Sugam Sangeet, Folk song ,Group Song, One Act Play, Mimickry, On Spot Painting, Mithila Painting, Rangoli, Debate,Elocution,Quiz.

- College Annual Sports held every year for boys and girls in all the events mentioned above
- The institution also sends team for participation in almost all the events held in LNMU Inter College Tournaments.

**5.3.2. Furnish the details of major student achievements in co-curricular, extracurricular and cultural activities at different levels: University / State / Zonal / National / International, etc. for the previous four years.**

- The students of this institution participated in co-curricular, extracurricular and cultural activities at university level.
- The students have participated in 'Yuva Mahotsav' and got prizes in Debate and cultural activities at university level in 2011.

**5.3.3. How does the college seek and use data and feedback from its graduates and employers, to improve the performance and quality of the institutional provisions?**

- The college seeks and uses the data and feedback from its graduate and employers from its website to improve the performance and quality of the institution.
- The institution also acts and implements all the directions received from the Dean of the university.

**5.3.4. How does the college involve and encourage students to publish materials like catalogues, wall magazines, college magazine, and other material? List the publications / materials brought out by the students during the previous four academic sessions.**

- The institution does not involve in any such system where the students would be trained to publish their materials.
- On the other hand they get an opportunity to publish their materials through college magazine which is published annually.

**5.3.5. Does the college have a Student Council or any similar body? Give details on its selection, constitution, activities and funding.**

- The college does have a Student Council/Union.
- The members of the student Council are nominated from amongst the meritorious students of various departments as per the direction of the Chancellor's office / university.
- The constitution of Student Council is as framed by the Chancellor office.
- Its activities and funding is monitored by the college as per the direction of the university.

**5.3.6. Give details of various academic and administrative bodies that have student representatives on them.**

- The Academic and Administrative bodies where the student representatives are directly involved in Anti-ragging Committee, College Council, College Magazine Committee, Poor Boy's Fund Committee etc.

**5.3.7. How does the institution network and collaborate with the Alumni and former faculty of the Institution.**

- The institution does have an Alumni Association and the college also calls its former faculty members on College Day and Sankalp Diwas.
- The institution receives feedback from its Alumni Association and former faculty members and acts as per the suggestions received from them.

**Any other relevant information regarding Student Support and Progression which the college would like to include.**

## **CRITERION VI: GOVERNANCE, LEADERSHIP AND MANAGEMENT**

### **6.1. Institutional Vision and Leadership:**

**6.1.1. State the vision and mission of the Institution and enumerate on how the mission statement defines the institution's distinctive characteristics in terms of addressing the needs of the society, the students it seeks to serve, institution's traditions and value orientations, vision for the future, etc.?**

#### **VISION:**

- The institution was started with the clear vision of furnishing the dire needs of educationally lagging area in this economically backward area ravaged by the fury of rivers Koshi and Kamala.
- The institution fulfills the long cherished dreams of the people of this area.
- This thickly populated area comprises of different classes and caste. The minority section has a sizable population. Besides the area has a majority of OBC, SC/ST population.
- Women of this area were completely deprived of education. This institution furnishes the needs of women education paving a solid ground for their empowerment in every walk of life.
- To keep pace with the forwarding India the institution has concrete devotional approach towards education.

#### **MISSION OF THE COLLEGE:**

- The mission of the college is to appreciate and respect all faiths, to nurture self and community development and promote religious and communal harmony leading to national integration.
- To create a teaching learning environment conducive to the pursuit of higher knowledge relevant skills and experience up to undergraduate level.
- To promote awareness on ecological, environmental and burning issues.

- To motivate students on socio-economic issues making emphasis on gender and human rights by engaging them in extra-curricular activities.
- To give inputs to students to become good students and above all to promote them as good and responsible citizens.
- To foster quality education and high moral standard coverings on government level.
- To educate students of all sections of the society.
- To provide equal opportunity to both genders and bring awareness in women specially.
- To develop the skills of students for better employment prospect.

#### **6.1.2. What is the role of top management, Principal and Faculty in design and implementation of its quality policy and plans?**

- Since this is a constituent college policies are formulated at the level of University.
- The Principal and faculty implement these policies on the campus by forming the different committees.
- These committees give recommendation time to time to improve the educational, administrative and developmental aspect of the institution.

#### **6.1.3. What is the involvement of the leadership in ensuring?**

##### **The policy statements and action plans for fulfillment of the stated mission-**

- The institution enforces its policies and action plans through departmental council and various organizations keeping in view co-education and a sizable section of girl's pursuing education.

##### **Formulation of action plans for all operations and incorporation of the same into the institutional strategic plan**

- The IQAC and the Planning Board (Advisory Committee) discuss and decide new action plan and incorporate them into the institutional strategic plan.

**Interaction with stakeholders**

- On every 'Sankalp Diwas' and 'College Day' we invite students, stakeholders including guardians and elites of this area to discuss our achievements and future plans.

**Proper support for policy and planning through need analysis, research inputs and consultations with the stakeholders**

- In our consultation with the stakeholders, we furnish the views of faculty members and research input to get concrete deliberated ideas and suggestions for framing our policies and planning.

**Reinforcing the culture of excellence**

- Through rigorous teaching and various organizations financed by donors, the institution imbibes the culture of excellence.

**Champion organizational change**

- NA

**6.1.4. What are the procedures adopted by the institution to monitor and evaluate policies and plans of the institution for effective implementation and improvement from time to time?**

- The institution has College Council, Advisory Committee, Development Committee and Disciplinary Committee to monitor and evaluate policies and plans of the institution.
- These committees give their recommendations time to time for effective implementation and improvement of the policies and plans related to administrative, academic and developmental aspects of the institution.

**6.1.5. Give details of the academic leadership provided to the faculty by the top management?**

- The principal organizes the meeting of Departmental Council of the institution.
- Academic issues are discussed with faculties and they are persuaded to conduct Seminars, Conferences and Debates.

- They are also persuaded to ensure their participation at National and International level.

**6.1.6. How does the college groom leadership at various levels?**

- The college grooms leadership quality at different level and promotes it through games, sports, seminars and cultural activities, so that students crop up at national level.

**6.1.7. How does the college delegate authority and provide operational autonomy to the departments / units of the institution and work towards decentralized governance system?**

- The principal decentralizes operational autonomy by forming different committees.
- Departmental autonomy is monitored by the principal regularly.

**6.1.8. Does the college promote a culture of participative management? If ?yes?, indicate the levels of participative management.**

- Yes, the principal calls the College Council meeting four times in a year in which different problems and suggestions are discussed.
- Through this the college promotes culture of participative management.

**6.2. Strategy Development and Deployment:**

**6.2.1. Does the Institution have a formally stated quality policy? How is it developed, driven, deployed and reviewed?**

- Yes.
- Quality policy is developed through orientation, examination, periodical tests, regularity and punctuality of students and staff members.
- It is driven through faculty members and committees.
- It is deployed through concentrated watch over students and employees participation in various programmes.
- It is reviewed by the principal in College Council meetings through feedback collected from departments.



**6.2.2. Does the Institute have a perspective plan for development? If so, give the aspects considered for inclusion in the plan.**

- Yes, the institute does have a perspective plan for development. The aspects considered for inclusion in the plan are –
- Development of Language lab.
- Infrastructural development for starting various career vocational courses.
- Development of Computer Informatics Centre.
- Separate building of Science block.
- Construction of Girl's Common Room.
- Construction of Conference Hall.
- Construction of Boy's Common Room.
- Construction of boundary walls.
- Extension & renovation of Principal' chamber.
- Construction of Administrative building.
- Construction of Reading Room.
- Construction of Cycle shed.

**6.2.3. Describe the internal organizational structure and decision making processes.**

- The institution has different organizational structure like Building Committee, Advisory Committee, Purchase Committee, Departmental Council, College Council etc.

**6.2.4. Give a broad description of the quality improvement strategies of the institution for each of the following**

**Teaching & Learning**

- Class room lessons and tutorials.
- Practical classes in labs.
- Digitalization of library

**Research & Development**

- U.G.C. sponsored major and minor research.

**Community engagement**

- N.S.S.unit constantly works for community engagement during camps.

**Human resource management**

- Human resource management is reviewed at the meeting of Staff Council.

**Industry interaction**

- NA.

**6.2.5. How does the Head of the institution ensure that adequate information (from feedback and personal contacts etc.) is available for the top management and the stakeholders, to review the activities of the institution?**

- Head of the institution collects feedback from the meeting of guardians, faculty members, students, alumni association and public representative and also through his personal contact.
- These are conveyed to the top management and the stakeholders through the proper channel.

**6.2.6. How does the management encourage and support involvement of the staff in improving the effectiveness and efficiency of the institutional processes?**

- The college encourages the staff in improving the effectiveness and efficiency of the institutional process through College Council.
- The principal reshuffles the assignment time to time and monitors their efficiency.

**6.2.7. Enumerate the resolutions made by the Management Council in the last year and the status of implementation of such resolutions.**

- The institution resolves last year to strengthen the infrastructural facilities to meet the surging up the challenges relating to students, teachers and the institution.

- Accordingly construction of girl's and boy's common room, raising the number of class rooms, the construction of a permanent cycle shed and the fencing of the garden are in progress and likely to be completed within stipulated time frame.

**6.2.8. Does the affiliating university make a provision for according the status of autonomy to an affiliated institution? If ?yes?, what are the efforts made by the institution in obtaining autonomy?**

- No such provision or proposal has been accorded to the institution.

**6.2.9. How does the Institution ensure that grievances / complaints are promptly attended to and resolved effectively? Is there a mechanism to analyse the nature of grievances for promoting better stakeholder relationship?**

- The institution has a Grievance Redressal cell.
- Grievances and complains received from the students and employees are properly analyzed and redressed to ensure better relationship.

**6.2.10. During the last four years, had there been any instances of court cases filed by and against the institute? Provide details on the issues and decisions of the courts on these?**

- RTIs relating to certain grievances came to the institution and these were amicably and reasonably settled.
- A case relating to land dispute is in the local court. Still the decision is pending.
- A case by building contractor was lodged in the High Court and the Hon'ble court quashed it.

**6.2.11. Does the Institution have a mechanism for analyzing student feedback on institutional performance? If ?yes?, what was the outcome and response of the institution to such an effort?**

- Yes, through the college website the feedback is collected.
- The institution analyzes the feedback received in the principal student meeting.
- The outcome of such analysis is positive.

### **6.3. Faculty Empowerment Strategies:**

#### **6.3.1. What are the efforts made by the institution to enhance the professional development of its teaching and non teaching staff?**

- Teachers are inspired to get enrolled in refresher and Orientation courses and provision of DL and financial grants is made available to them.
- For their excellences they are honored on special occasion.
- The college administration reshuffles and monitors the assignment of the non-teaching staffs to enhance their efficiencies.

#### **6.3.2. What are the strategies adopted by the institution for faculty empowerment through training, retraining and motivating the employees for the roles and responsibility they perform?**

- The strategies adopted by the institution for faculty empowerment are through refresher courses, orientation courses, workshops, seminars, conferences.

#### **6.3.3. Provide details on the performance appraisal system of the staff to evaluate and ensure that information on multiple activities is appropriately captured and considered for better appraisal.**

- The head of the institution keeps constant and direct watch on the performances and involvement of staffs.
- Self appraisal report is collected and evaluated.

#### **6.3.4. What is the outcome of the review of the performance appraisal reports by the management and the major decisions taken? How are they communicated to the appropriate stakeholders?**

- The institution reviews the performance and takes the decision to train all the teaching and non-teaching staffs.

- Monthly progress report of teachers and confidential report of all staff are sent to the university.
- These are communicated to the stakeholders through college website, alumni association meeting and guardian's meeting.

#### **6.3.5. What are the welfare schemes available for teaching and non teaching staff?**

**What percentage of staff have availed the benefit of such schemes in the last four years?**

- The welfare schemes available for teaching and non-teaching staff are namely-
- Group Insurance Scheme, University Welfare Fund, and H.P.S.College Teacher's Welfare fund.
- 62 % of the staff have availed the benefit of such schemes.

#### **6.3.6. What are the measures taken by the Institution for attracting and retaining eminent faculty?**

- The institution has no such measures to attract the eminent faculties.
- Yet the eminent faculties are involved in participating in Seminars, Workshops and guiding in research works.

### **6.4. Financial Management and Resource Mobilization:**

#### **6.4.1. What is the institutional mechanism to monitor effective and efficient use of available financial resources?**

- The principal, Bursar and the University representative (UR) monitor effectively and efficiently the available financial resources.

#### **6.4.2. What are the institutional mechanisms for internal and external audit? When was the last audit done and what are the major audit objections? Provide the details on compliance.**

- At institution level the principal and Bursar regularly audit the expenditure of available resources.

- The university audit team and the chartered accountant nominated by the institution do the external audit.
- The last audit was conducted in the financial year-2011-12
- No audit objection was made in its report.

**6.4.3. What are the major sources of institutional receipts / funding and how is the deficit managed? Provide audited income and expenditure statement of academic and administrative activities of the previous four years and the reserve fund / corpus available with Institutions, if any.**

- Major sources of institutional receipt and funding are-
  - 1- Donation
  - 2- Rent
  - 3- Campus Development Fund
  - 4- Settlement of Land & Ponds belonging to the college.
  - 5- Land produced.
  - 6- Grants made available by public representatives.
  - 7- Fees collected from the students.
  - 8- From UGC grants.
  - 9- From State Government.

- Deficits are managed by the university.

Four year Income and Expenditure of the institution is as:-

<i>Financial Year</i>	<i>Income</i>	<i>Expenditure</i>
2009-10	13963521.00	11502201.00
2010-11	12573980.00	11155958.00
2011-12	19641762.00	18881885.00
2012-13	29974664.00	28813554.00

**6.4.4. Give details on the efforts made by the institution in securing additional funding and the utilization of the same (if any).**

- The institution has made efforts for securing additional funding from local representatives, various local donors and alumni.
- These are utilized for infrastructure development and maintenance.

**6.5. Internal Quality Assurance System (IQAS):**

**6.5.1. Internal Quality Assurance Cell (IQAC)**

- Has the institution established an Internal Quality Assurance Cell (IQAC)? If 'yes', what is the institutional policy with regard to quality assurance and how has it contributed in institutionalizing the quality assurance processes?
  - Yes. The institution established IQAC in September 2012.
  - The institution implements the recommendations of IQAC regarding quality assurance.
- How many decisions of the IQAC have been approved by the management/authorities for implementation and how many of them were actually implemented?
  - Most of the recommendations of IQAC has been implemented.
  - The efforts of IQAC have resulted in the development of departments, offices, laboratories, the automation of library and sports facilities.
- Does the IQAC have external members on its committee? If so, mention any significant contribution made by them.
  - Yes, The Block Pramukh is the external member of the IQAC.
  - He gives valuable suggestions regarding academic wake up. He also contributed eco-friendly system of Solar lighting in the campus.
- How do students and alumni contribute to the effective functioning of the IQAC?
  - Students and alumni put forward their suggestions as per the recommendation of IQAC.
  - The alumni association has contributed urinal facility for students in the campus.

e. How does the IQAC communicate and engage staff from different constituents of the institution?

- Different constituents of the institution fully co-operate in this wake.
- They are guided by IQAC to give their optimum.

**6.5.2. Does the institution have an integrated framework for Quality assurance of the academic and administrative activities? If ?yes?, give details on its operationalisation.**

- Yes.
- The principal makes a constant vigil and watch on the academic and administrative activities.
- H.A. monitors the activities and the performance of non-teaching staff for the implementation of IQAC decision and correction if any.

**6.5.3. Does the institution provide training to its staff for effective implementation of the Quality assurance procedures? If ?yes?, give details enumerating its impact.**

- Yes.
- IQAC summons meeting of staff and other department to get them involve in the process.
- Digitalization of library is already in progress.
- For the up gradation and the enhancement of the skill of non-teaching staff , computer learning programme is organized by the institution.
- The institution also sends its non-staff for different workshops and training at the university level.

**6.5.4. Does the institution undertake Academic Audit or other external review of the academic provisions? If ?yes?, how are the outcomes used to improve the institutional activities?**

- NA



**6.5.5. How are the internal quality assurance mechanisms aligned with the requirements of the relevant external quality assurance agencies/regulatory authorities?**

- NA

**6.5.6. What institutional mechanisms are in place to continuously review the teaching learning process? Give details of its structure, methodologies of operations and outcome?**

- The principal summons the College council meetings four times in a year.
- Monthly progress report of the teaching and non-teaching staff is evaluated and the same is forwarded to the university with the principal's confidential report.

**6.5.7. How does the institution communicate its quality assurance policies, mechanisms and outcomes to the various internal and external stakeholders?**

- The institution communicates its quality assurance policy through the college website, guardian meet, College council, prospectus of the college internally and externally to the stakeholders.

**Any other relevant information regarding Governance Leadership and Management which the college would like to include.**

## CRITERION VII: INNOVATION AND BEST PRACTICES

### **7.1. Environment Consciousness:**

#### **7.1.1. Does the Institute conduct a Green Audit of its campus and facilities?**

- Yes, the institution conducts a Green Audit of its campus and facilities.

#### **7.1.2. What are the initiatives taken by the college to make the campus eco-friendly?**

##### **Energy conservation**

- By installing the solar power units in the campus.

##### **Use of renewable energy**

##### **Water harvesting**

- A separate pond has been constructed for water harvesting.

##### **Check dam construction-**

- Since it is flood prone rural area, no dam construction is made.

##### **Efforts for Carbon neutrality**

##### **Plantation**

- Plantation is done by the N.S.S.Unit.

##### **Hazardous waste management**

- For the disposal of wastes, a separate ditch is constructed inside the campus.
- Through drainage, we manage out flood water from the campus.

##### **E-waste management**

### **7.2. Innovations:**

#### **7.2.1. Give details of innovations introduced during the last four years which have created a positive impact on the functioning of the college.**

**Innovations introduced during the last four years are-**

- Computerization of Departments.
- Development of college website.
- Digitalization of library.
- Eco-friendly campus.
- Wi Fi enabled campus.

These innovations have brought about a sea-change in the smooth functioning of institution.

### **7.3. Best Practices:**

#### **7.3.1. Elaborate on any two best practices as per the annexed format which have contributed to the achievement of the Institutional Objectives and / or contributed to the Quality improvement of the core activities of the college**

The two best practices as per the Annexed Format which have contributed to the achievement of the institutional Objectives are as-

##### **1- Goal**

- The aim and practice of the institution has been to spread quality education among all section of society sans gender and class discrimination.

##### **2- The Practice**

- The institution has a co-education system up to under graduate level in this economically backward but politically very conscious region. The share of girl student is almost 50%. In spite of that we have never faced any disturbance as against the prevailing uneasy atmosphere in other campuses.

## EVALUATION REPORT OF THE DEPARTMENTS

### Evaluative Report of the Department - English:

The Self-evaluation of every department may be provided separately in about 3-4 pages, avoiding the repetition of the data.

1. Name of the department: *Dept of English*
2. Year of Establishment: *1977*
3. Names of Programmes / Courses offered (UG, PG, M.Phil., Ph.D., Integrated Masters; Integrated Ph.D. etc.): *UG*
4. Names of Interdisciplinary courses and the departments/units involved: *B.A.Hons/Pass*
5. Annual/ semester/choice based credit system (programme wise): *Annual*
6. Participation of the department in the courses offered by other departments: *NA*
7. Courses in collaboration with other universities, industries, foreign institutions, etc.: *NA*
8. Details of courses / programmes discontinued (if any) with reasons: *No discontinuation*
9. Number of Teaching posts

	Sanctioned	Filled
Professor	0	0
Associate Professor	0	1
Assistant Professor	3	1

10. Faculty profile with name, qualification, designation, specialization, (D.Sc./D.Litt./Ph.D. / M. Phil. etc.,)

Name	Qualification	Designation	Specialization	No. of years of Experience	No. of Ph.D students guided for last four years.
Prof. Bhairweshwar Jha	M.A.	Associate Professor	American Literature	37 years	Nil
Prof. Umar Farooque	M.A.	Assistant Professor	Linguistics & Phonetics	21 Years	Nil

11. List of senior visiting faculty: *NA*
12. Percentage of lectures delivered and practical classes handled (programme wise)  
by temporary faculty: *Nil*
13. Student -Teacher Ratio (programme wise): *13:1*
14. Number of academic support staff (technical) and administrative staff; sanctioned and filled:  
*Academic Support Staff- Nil, Administrative Staff- Nil*
15. Qualifications of teaching faculty with DSc/ D.Litt/ Ph.D/ MPhil/PG: *Both PG*
16. Number of faculty with ongoing projects from a) National b) International funding agencies and grants received: *Nil*
17. Departmental projects funded by DST-FIST; UGC, DBT, ICSSR, etc. and total grants received: *Nil*
18. Research Centre /facility recognized by the University. *NA*
19. Publications:

\* a) Publication per faculty:

Name of the Faculty Members	Title of Paper	Name of Journal	Vol. & Page with Year
	0	0	0

\* Number of papers published in peer reviewed journals (national /international) by faculty and students.

\* Number of publications listed in International Database (For eg: Web of Science, Scopus, Humanities International Complete, Dare Database –

International Social Sciences Directory, EBSCO host, etc.)- *Nil*

\* Monographs *-Nil*

\* Chapter in Books- *-0*

\* Books Edited *-01 (1- Geet Malika)*

Books with ISBN/ISSN numbers with details of publishers- 03,

1- Efflorescence of Realism(A study in Arthur Millar's Drama),

Pub:- Bhartiya Vidya Bhawan, Delhi-2010,

- 2- Shaili O Samiksha Vriti, Pub:- Ayachi Publication Society, 2013,
- 3- Ek Pheriwala k Mrityu, Pub:- Printwell, 2013
- 4- Translation of Knowledge Text in Maithili ( Pre-History- Irfan Habib)
- 5- Translation of Dakchal Dewal by Balram ( Printwell)
- 6- Representative Maithili Poems (Printwell)

* Citation Index	-Nil
* SNIP	-Nil
* SJR	-Nil
* Impact factor	-Nil
* h-index	-Nil

20. Areas of consultancy and income generated: *None*

21. Faculty as members in:

- a) National committees: *No*
- b) International Committees: *No*
- c) Editorial Boards: *No*

22. Student projects

- a) Percentage of students who have done in-house projects including inter departmental/programme: *No*
- b) Percentage of students placed for projects in organizations outside the institution i.e.in Research laboratories/Industry/other agencies: *No*

23. Awards/ Recognitions received by faculty and students : *No*

24. List of eminent academicians and scientists/ visitors to the department: *No*

25. Seminars/ Conferences/Workshops organized & the source of funding:

- a) National: *No*
- b) International: *No*

26. Student profile programme/course wise:

Name of the course /programme ( refer question no.4)	Application received	Selected	Enrolled *M *F	Pass Percentage
2010-13	07	07	05 02	86%
2009-12	05	05	04 01	60%
2008-11	02	02	02 00	100%
2007-10	07	07	05 02	57%

M = Male, F= Female

27. Diversity of Students:

Name of the course	% of students from same state	% of students from other state	% of students from abroad
2010-13	100%	0	0
2009-12	100%	0	0
2008-11	100%	0	0
2007-10	100%	0	0

28. How many students have cleared national and state competitive examinations such as NET, SLET, GATE, Civil services, Defense services, etc.?:

- Data not available

29. Student progression:

Student Progression	Against % enrolled
UG to PG	80%
PG to M.Phil	0%
PG to Ph.D.	5%
Ph.D. to Post-Doctoral	0%
Employed *Campus Selection *Other than campus recruitment	0% Data not available
Entrepreneurship / Self-employment.	Data not available

30. Details of Infrastructural facilities

a) Library:

Digitalized Library

- b) Internet facilities for Staff & Students: *Internet with Wi-Fi facility for both.*
- c) Class rooms with ICT facility: *Not available*
- d) Laboratories: *Well equipped laboratories for Sc.*
31. Number of students receiving financial assistance from college, university, government or other agencies: *Students are getting UGC stipend and govt. scholarship.*
32. Details on student enrichment programmes (special lectures / workshops / seminar) with external experts: *Special lectures and seminars are being organized for student enrichment programme.*
33. Teaching methods adopted to improve student learning: *Teacher student Interactive method is adopted to improve student learning.*
34. Participation in Institutional Social Responsibility (ISR) and Extension activities: *Students of the department actively participate in extension activities through N.S.S.*
35. SWOC analysis of the department and Future plans.

### **Evaluative Report of the Department - Hindi:**

The Self-evaluation of every department may be provided separately in about 3-4 pages, avoiding the repetition of the data.

1. Name of the department: *Dept of Hindi*
2. Year of Establishment: *1977*
3. Names of Programmes / Courses offered (UG, PG, M.Phil., Ph.D., Integrated Masters; Integrated Ph.D. etc.): *UG*
4. Names of Interdisciplinary courses and the departments/units involved: *B.A.Hons/Pass*
5. Annual/ semester/choice based credit system (programme wise): *Annual*
6. Participation of the department in the courses offered by other departments: *NA*
7. Courses in collaboration with other universities, industries, foreign institutions, etc.: *NA*
8. Details of courses / programmes discontinued (if any) with reasons: *No discontinuation*



## 9. Number of Teaching posts

	Sanctioned	Filled
Professor	0	0
Associate Professor	0	1
Assistant Professor	2	0

## 10. Faculty profile with name, qualification, designation, specialization, (D.Sc./D.Litt./Ph.D. / M. Phil. etc.,)

Name	Qualification	Designation	Specialization	No. of years of Experience	No. of Ph.D students guided for last four years.
Dr. Shubhkant Choudhary	M.A. Ph.D.	Associate Professor	Jayshankar Prasad	35 years	03

## 11. List of senior visiting faculty: NA

## 12. Percentage of lectures delivered and practical classes handled (programme wise) by temporary faculty: Nil

## 13. Student -Teacher Ratio (programme wise): 26:1

## 14. Number of academic support staff (technical) and administrative staff; sanctioned and filled: Academic Support Staff- Nil, Administrative Staff- Nil

## 15. Qualifications of teaching faculty with DSc/ D.Litt/ Ph.D/ MPhil/PG: Ph.D

## 16. Number of faculty with ongoing projects from a) National b) International funding agencies and grants received: Nil

## 17. Departmental projects funded by DST-FIST; UGC, DBT, ICSSR, etc. and total grants received: Nil

## 18. Research Centre /facility recognized by the University. NA

## 19. Publications:

## \* a) Publication per faculty:

Name of the Faculty Members	Title of Paper	Name of Journal	Vol. & Page with Year
Dr. Shubhkant Choudhary	0	0	0

- \* Number of papers published in peer reviewed journals (national /international) by faculty and students.
- \* Number of publications listed in International Database (For eg: Web of Science, Scopus, Humanities International Complete, Dare Database –

International Social Sciences Directory, EBSCO host, etc.)- *Nil*

\* Monographs *-Nil*

\* Chapter in Books- *-Nil*

\* Books Edited *-Nil*

Books with ISBN/ISSN numbers with details of publishers- *Nil*

\* Citation Index *-Nil*

\* SNIP *-Nil*

\* SJR *-Nil*

\* Impact factor *-Nil*

\* h-index *-Nil*

20. Areas of consultancy and income generated: *None*

21. Faculty as members in:

a) National committees: *No*

b) International Committees: *No*

c) Editorial Boards: *No*

22. Student projects:

a) Percentage of students who have done in-house projects including inter departmental/programme: *No*

b) Percentage of students placed for projects in organizations outside the institution i.e.in Research laboratories/Industry/other agencies: *No*

23. Awards/ Recognitions received by faculty and students : *No*

24. List of eminent academicians and scientists/ visitors to the department: *No*

25. Seminars/ Conferences/Workshops organized & the source of funding:

a) National: *No*

b) International: *No*

## 26. Student profile programme/course wise:

Name of the course /programme (refer question no.4)	Application received	Selected	Enrolled *M *F	Pass Percentage
2010-13	12	12	09 03	58%
2009-12	10	10	03 07	60%
2008-11	10	10	06 04	100%
2007-10	14	14	09 05	43%

M = Male, F= Female

## 27. Diversity of Students:

Name of the course	% of students from same state	% of students from other state	% of students from abroad
2010-13	100%	0	0
2009-12	100%	0	0
2008-11	100%	0	0
2007-10	100%	0	0

## 28. How many students have cleared national and state competitive examinations such as NET, SLET, GATE, Civil services, Defense services, etc.?:

- Data not available

## 29. Student progression:

Student Progression	Against % enrolled
UG to PG	85%
PG to M.Phil	0%
PG to Ph.D.	5%
Ph.D. to Post-Doctoral	0%
Employed *Campus Selection *Other than campus recruitment	0% Data not available
Entrepreneurship / Self-employment.	Data not available

## 30. Details of Infrastructural facilities

a) Library:

Digitalized Library

- b) Internet facilities for Staff & Students: *Internet with Wi-Fi facility for both.*
- c) Class rooms with ICT facility: *Not available*
- d) Laboratories: *Well equipped laboratories for Sc.*
31. Number of students receiving financial assistance from college, university, government or other agencies: *Students are getting UGC stipend and govt. scholarship.*
32. Details on student enrichment programmes (special lectures / workshops / seminar) with external experts: *Special lectures and seminars are being organized for student enrichment programme.*
33. Teaching methods adopted to improve student learning: *Teacher student Interactive method is adopted to improve student learning.*
34. Participation in Institutional Social Responsibility (ISR) and Extension activities: *Students of the department actively participate in extension activities through N.S.S.*
35. SWOC analysis of the department and Future plans.

### **Evaluative Report of the Department - History:**

The Self-evaluation of every department may be provided separately in about 3-4 pages, avoiding the repetition of the data.

1. Name of the department: *Dept of History*
2. Year of Establishment: *1977*
3. Names of Programmes / Courses offered (UG, PG, M.Phil., Ph.D., Integrated Masters; Integrated Ph.D. etc.): *UG*
4. Names of Interdisciplinary courses and the departments/units involved: *B.A.Hons/Pass*
5. Annual/ semester/choice based credit system (programme wise): *Annual*
6. Participation of the department in the courses offered by other departments: *NA*
7. Courses in collaboration with other universities, industries, foreign institutions, etc.: *NA*
8. Details of courses / programmes discontinued (if any) with reasons: *No discontinuation*

## 9. Number of Teaching posts

	Sanctioned	Filled
Professor	0	0
Associate Professor	0	1
Assistant Professor	2	0

## 10. Faculty profile with name, qualification, designation, specialization, (D.Sc./D.Litt./Ph.D. / M. Phil. etc.,)

Name	Qualification	Designation	Specialization	No. of years of Experience	No. of Ph.D students guided for last four years.
Prof. Bhim Nath Jha	M.A.	Associate Professor	Medieval India	33 years	Nil

## 11. List of senior visiting faculty: NA

## 12. Percentage of lectures delivered and practical classes handled (programme wise)

by temporary faculty: Nil

## 13. Student -Teacher Ratio (programme wise): 636:1

## 14. Number of academic support staff (technical) and administrative staff; sanctioned and filled:

Academic Support Staff- Nil, Administrative Staff- Nil

## 15. Qualifications of teaching faculty with DSc/ D.Litt/ Ph.D/ MPhil/PG: PG

## 16. Number of faculty with ongoing projects from a) National b) International funding agencies and grants received: Nil

## 17. Departmental projects funded by DST-FIST; UGC, DBT, ICSSR, etc. and total grants received: Nil

## 18. Research Centre /facility recognized by the University. NA

## 19. Publications:

## \* a) Publication per faculty:

Name of the Faculty Members	Title of Paper	Name of Journal	Vol. & Page with Year
Prof. Bhim Nath Jha	0	0	0

\* Number of papers published in peer reviewed journals (national /international) by faculty and students. *Nil*

\* Number of publications listed in International Database (For eg: Web of Science, Scopus, Humanities International Complete, Dare Database –

International Social Sciences Directory, EBSCO host, etc.)- *Nil*

\* Monographs *-Nil*

\* Chapter in Books *-Nil*

\* Books Edited *-Nil*

\* Books with ISBN/ISSN numbers with details of publishers *-Nil*

\* Citation Index *-Nil*

\* SNIP *-Nil*

\* SJR *-Nil*

\* Impact factor *-Nil*

\* h-index *-Nil*

20. Areas of consultancy and income generated: *None*

21. Faculty as members in:

a) National committees: *No*

b) International Committees: *No*

c) Editorial Boards: *No*

22. Student projects

a) Percentage of students who have done in-house projects including inter departmental/programme: *No*

b) Percentage of students placed for projects in organizations outside the institution i.e.in Research laboratories/Industry/other agencies: *No*

23. Awards/ Recognitions received by faculty and students : *No*

24. List of eminent academicians and scientists/ visitors to the department: *No*

25. Seminars/ Conferences/Workshops organized & the source of funding:

a) National: *No*

b) International: *No*

## 26. Student profile programme/course wise:

Name of the course /programme ( refer question no.4)	Application received	Selected	Enrolled *M *F	Pass Percentage
2010-13	125	125	69 56	75%
2009-12	93	93	75 18	81%
2008-11	86	86	59 29	81%
2007-10	51	51	40 11	71%

M = Male, F= Female

## 27. Diversity of Students:

Name of the course	% of students from same state	% of students from other state	% of students from abroad
2010-13	100%	0	0
2009-12	100%	0	0
2008-11	100%	0	0
2007-10	100%	0	0

## 28. How many students have cleared national and state competitive examinations such as NET, SLET, GATE, Civil services, Defense services, etc.?:

- Data not available

## 29. Student progression:

Student Progression	Against % enrolled
UG to PG	80%
PG to M.Phil	0%
PG to Ph.D.	5%
Ph.D. to Post-Doctoral	0%
Employed *Campus Selection *Other than campus recruitment	0% Data not available
Entrepreneurship / Self-employment.	Data not available

## 30. Details of Infrastructural facilities

a) Library:

Digitalized Library

- b) Internet facilities for Staff & Students: *Internet with Wi-Fi facility for both.*
- c) Class rooms with ICT facility: *Not available*
- d) Laboratories: *Well equipped laboratories for Sc.*
31. Number of students receiving financial assistance from college, university, government or other agencies: *Students are getting UGC stipend and govt. scholarship.*
32. Details on student enrichment programmes (special lectures / workshops / seminar) with external experts: *Special lectures and seminars are being organized for student enrichment programme.*
33. Teaching methods adopted to improve student learning: *Teacher student Interactive method is adopted to improve student learning.*
34. Participation in Institutional Social Responsibility (ISR) and Extension activities: *Students of the department actively participate in extension activities through N.S.S.*
35. SWOC analysis of the department and Future plans.

### **Evaluative Report of the Department - Economics:**

The Self-evaluation of every department may be provided separately in about 3-4 pages, avoiding the repetition of the data.

1. Name of the department: *Dept of Economics*
2. Year of Establishment: *1977*
3. Names of Programmes / Courses offered (UG, PG, M.Phil., Ph.D., Integrated Masters; Integrated Ph.D. etc.): *UG*
4. Names of Interdisciplinary courses and the departments/units involved: *B.A.Hons/Pass*
5. Annual/ semester/choice based credit system (programme wise): *Annual*
6. Participation of the department in the courses offered by other departments: *NA*
7. Courses in collaboration with other universities, industries, foreign institutions, etc.: *NA*
8. Details of courses / programmes discontinued (if any) with reasons: *No discontinuation*



## 9. Number of Teaching posts

	Sanctioned	Filled
Professor	0	0
Associate Professor	0	1
Assistant Professor	3	0

## 11. Faculty profile with name, qualification, designation, specialization, (D.Sc./D.Litt./Ph.D. / M. Phil. etc.,)

Name	Qualification	Designation	Specialization	No. of years of Experience	No. of Ph.D students guided for last four years.
Dr. Madneshwar Jha	M.A. Ph.D	Associate Professor	Rural Economics	33 years	Nil

## 11. List of senior visiting faculty: NA

## 12. Percentage of lectures delivered and practical classes handled (programme wise)

by temporary faculty: Nil

## 13. Student -Teacher Ratio (programme wise): 74:1

14. Number of academic support staff (technical) and administrative staff; sanctioned and filled:  
Academic Support Staff- Nil, Administrative Staff- Nil

## 15. Qualifications of teaching faculty with DSc/ D.Litt/ Ph.D/ MPhil/PG: Ph.D.

## 16. Number of faculty with ongoing projects from a) National b) International funding agencies and grants received: Nil

## 17. Departmental projects funded by DST-FIST; UGC, DBT, ICSSR, etc. and total grants received: Nil

## 18. Research Centre /facility recognized by the University. NA

## 19. Publications:

## \* a) Publication per faculty:

Name of the Faculty Members	Title of Paper	Name of Journal	Vol. & Page with Year
Dr. Madneshwar Jha	Bharatiya Niryat	Yojna	Vol-11, July, 1, 1993

\* Number of papers published in peer reviewed journals (national /international) by faculty and students. *-One*

\* Number of publications listed in International Database (For eg: Web of Science, Scopus, Humanities International Complete, Dare Database –

International Social Sciences Directory, EBSCO host, etc.)- *Nil*

\* Monographs *-Nil*

\* Chapter in Books *-Nil*

\* Books Edited *-Nil*

\* Books with ISBN/ISSN numbers with details of publishers *-Nil*

\* Citation Index *-Nil*

\* SNIP *-Nil*

\* SJR *-Nil*

\* Impact factor *-Nil*

\* h-index *-Nil*

20. Areas of consultancy and income generated: *None*

21. Faculty as members in:

a) National committees: *No*

b) International Committees: *No*

c) Editorial Boards: *No*

22. Student projects

a) Percentage of students who have done in-house projects including inter departmental/programme: *No*

b) Percentage of students placed for projects in organizations outside the institution i.e.in Research laboratories/Industry/other agencies: *No*

23. Awards/ Recognitions received by faculty and students : *No*

24. List of eminent academicians and scientists/ visitors to the department: *No*

25. Seminars/ Conferences/Workshops organized & the source of funding:

a) National: *No*

b) International: *No*

## 26. Student profile programme/course wise:

Name of the course /programme (refer question no.4)	Application received	Selected	Enrolled *M *F	Pass Percentage
2010-13	32	32	26 06	50%
2009-12	15	15	10 05	80%
2008-11	14	14	11 03	64%
2007-10	08	08	05 03	88%

M = Male, F= Female

## 27. Diversity of Students:

Name of the course	% of students from same state	% of students from other state	% of students from abroad
2010-13	100%	0	0
2009-12	100%	0	0
2008-11	100%	0	0
2007-10	100%	0	0

## 28. How many students have cleared national and state competitive examinations such as NET, SLET, GATE, Civil services, Defense services, etc.?:

- Data not available

## 29. Student progression:

Student Progression	Against % enrolled
UG to PG	80%
PG to M.Phil	0%
PG to Ph.D.	5%
Ph.D. to Post-Doctoral	0%
Employed *Campus Selection *Other than campus recruitment	0% Data not available
Entrepreneurship / Self-employment.	Data not available

## 30. Details of Infrastructural facilities

a) Library:

Digitalized Library

- b) Internet facilities for Staff & Students: *Internet with Wi-Fi facility for both.*
- c) Class rooms with ICT facility: *Not available*
- d) Laboratories: *Well equipped laboratories for Sc.*
31. Number of students receiving financial assistance from college, university, government or other agencies: *Students are getting UGC stipend and govt. scholarship.*
32. Details on student enrichment programmes (special lectures / workshops / seminar) with external experts: *Special lectures and seminars are being organized for student enrichment programme.*
33. Teaching methods adopted to improve student learning: *Teacher student Interactive method is adopted to improve student learning.*
34. Participation in Institutional Social Responsibility (ISR) and Extension activities: *Students of the department actively participate in extension activities through N.S.S.*
35. SWOC analysis of the department and Future plans.  
*The future plan of the department is to upgrade teaching up to PG level. The department will to motivate students for field work to know the socio-economic condition of the people living in this area.*

### **Evaluative Report of the Department - Sociology:**

The Self-evaluation of every department may be provided separately in about 3-4 pages, avoiding the repetition of the data.

1. Name of the department: *Dept of Sociology*
2. Year of Establishment: *1977*
3. Names of Programmes / Courses offered (UG, PG, M.Phil., Ph.D., Integrated Masters; Integrated Ph.D. etc.): *UG*
4. Names of Interdisciplinary courses and the departments/units involved: *B.A.Hons/Pass*
5. Annual/ semester/choice based credit system (programme wise): *Annual*
6. Participation of the department in the courses offered by other departments: *NA*
7. Courses in collaboration with other universities, industries, foreign institutions, etc.: *NA*

8. Details of courses / programmes discontinued (if any) with reasons: *No discontinuation*

9. Number of Teaching posts

	Sanctioned	Filled
Professor	0	0
Associate Professor	0	1
Assistant Professor	2	0

12. Faculty profile with name, qualification, designation, specialization, (D.Sc./D.Litt./Ph.D. / M. Phil. etc.,)

Name	Qualification	Designation	Specialization	No. of years of Experience	No. of Ph.D students guided for last four years.
Prof. Jivendra Mishra	M.A.	Associate Professor	American Literature	33 years	Nil

11. List of senior visiting faculty: *NA*

12. Percentage of lectures delivered and practical classes handled (programme wise) by temporary faculty: *Nil*

13. Student -Teacher Ratio (programme wise): *288:1*

14. Number of academic support staff (technical) and administrative staff; sanctioned and filled: *Academic Support Staff- Nil, Administrative Staff- Nil*

15. Qualifications of teaching faculty with DSc/ D.Litt/ Ph.D/ MPhil/PG: *PG*

16. Number of faculty with ongoing projects from a) National b) International funding agencies and grants received: *Nil*

17. Departmental projects funded by DST-FIST; UGC, DBT, ICSSR, etc. and total grants received: *Nil*

18. Research Centre /facility recognized by the University. *NA*

19. Publications:

\* a) Publication per faculty:

Name of the Faculty Members	Title of Paper	Name of Journal	Vol. & Page with Year
Prof. Jivendra Mishra			

\* Number of papers published in peer reviewed journals (national /international) by faculty and students. *-Nil*

\* Number of publications listed in International Database (For eg: Web of Science, Scopus, Humanities International Complete, Dare Database –

International Social Sciences Directory, EBSCO host, etc.)- *Nil*

\* Monographs *-Nil*

\* Chapter in Books *-Nil*

\* Books Edited *-Nil*

\* Books with ISBN/ISSN numbers with details of publishers *-Nil*

\* Citation Index *-Nil*

\* SNIP *-Nil*

\* SJR *-Nil*

\* Impact factor *-Nil*

\* h-index *-Nil*

20. Areas of consultancy and income generated: *None*

21. Faculty as members in:

a) National committees: *No*

b) International Committees: *No*

c) Editorial Boards: *No*

22. Student projects

a) Percentage of students who have done in-house projects including inter departmental/programme: *No*

b) Percentage of students placed for projects in organizations outside the institution i.e.in Research laboratories/Industry/other agencies: *No*

23. Awards/ Recognitions received by faculty and students : *No*

24. List of eminent academicians and scientists/ visitors to the department: *No*

25. Seminars/ Conferences/Workshops organized & the source of funding:

a) National: *No*

b) International: *No*

## 26. Student profile programme/course wise:

Name of the course /programme ( refer question no.4)	Application received	Selected	Enrolled *M *F	Pass Percentage
2010-13	85	85	39 46	67%
2009-12	105	105	75 30	59%
2008-11	71	71	24 47	94%
2007-10	62	62	22 40	82%

M = Male, F= Female

## 27. Diversity of Students:

Name of the course	% of students from same state	% of students from other state	% of students from abroad
2010-13	100%	0	0
2009-12	100%	0	0
2008-11	100%	0	0
2007-10	100%	0	0

## 28. How many students have cleared national and state competitive examinations such as NET, SLET, GATE, Civil services, Defense services, etc.?:

- Data not available

## 29. Student progression:

Student Progression	Against % enrolled
UG to PG	80%
PG to M.Phil	0%
PG to Ph.D.	5%
Ph.D. to Post-Doctoral	0%
Employed *Campus Selection *Other than campus recruitment	0% Data not available
Entrepreneurship / Self-employment.	Data not available

## 30. Details of Infrastructural facilities

a) Library:

Digitalized Library

- b) Internet facilities for Staff & Students: *Internet with Wi-Fi facility for both.*
- c) Class rooms with ICT facility: *Not available*
- d) Laboratories: *Well equipped laboratories for Sc.*
31. Number of students receiving financial assistance from college, university, government or other agencies: *Students are getting UGC stipend and govt. scholarship.*
32. Details on student enrichment programmes (special lectures / workshops / seminar) with external experts: *Special lectures and seminars are being organized for student enrichment programme.*
33. Teaching methods adopted to improve student learning: *Teacher student Interactive method is adopted to improve student learning.*
34. Participation in Institutional Social Responsibility (ISR) and Extension activities: *Students of the department actively participate in extension activities through N.S.S.*
35. SWOC analysis of the department and Future plans.

### **Evaluative Report of the Department - Philosophy:**

The Self-evaluation of every department may be provided separately in about 3-4 pages, avoiding the repetition of the data.

1. Name of the department: *Dept of Philosophy*
2. Year of Establishment: *1977*
3. Names of Programmes / Courses offered (UG, PG, M.Phil., Ph.D., Integrated Masters; Integrated Ph.D. etc.): *UG*
4. Names of Interdisciplinary courses and the departments/units involved: *B.A.Hons/Pass*
5. Annual/ semester/choice based credit system (programme wise): *Annual*
6. Participation of the department in the courses offered by other departments: *NA*
7. Courses in collaboration with other universities, industries, foreign institutions, etc.: *NA*
8. Details of courses / programmes discontinued (if any) with reasons: *No discontinuation*



## 9. Number of Teaching posts

	Sanctioned	Filled
Professor	0	0
Associate Professor	0	0
Assistant Professor	1	1

## 13. Faculty profile with name, qualification, designation, specialization, (D.Sc./D.Litt./Ph.D. / M. Phil. etc.,)

Name	Qualification	Designation	Specialization	No. of years of Experience	No. of Ph.D students guided for last four years.
Dr. Umesh Kumar Chaudhary	M.A. Ph.D	Assistant Professor	Philosophy of Religion	10 years	1

## 11. List of senior visiting faculty: NA

## 12. Percentage of lectures delivered and practical classes handled (programme wise)

by temporary faculty: Nil

## 13. Student -Teacher Ratio (programme wise): 2:1

14. Number of academic support staff (technical) and administrative staff; sanctioned and filled:  
Academic Support Staff- Nil, Administrative Staff- Nil

## 15. Qualifications of teaching faculty with DSc/ D.Litt/ Ph.D/ MPhil/PG: Ph.D.

## 16. Number of faculty with ongoing projects from a) National b) International funding agencies and grants received: Nil

## 17. Departmental projects funded by DST-FIST; UGC, DBT, ICSSR, etc. and total grants received: Nil

## 18. Research Centre /facility recognized by the University. NA

## 19. Publications:

\* a) Publication per faculty:

Name of the Faculty Members	Title of Paper	Name of Journal	Vol. & Page with Year
Dr. Umesh Kumar Chaudhary	1-Anekkantvad ki vartman ki prasangikta 2-Nirpeksh Satta ka vichar avon Manav ki Bhavitavyata Radha Krishnan ki sandarbh mein 3- Budha avon Nayay Darshan mein Gyan Nimansha 4- Hindu Dharma von Naitik Chntan ki Byawaharik Drishti 5-Jain Darshan Avon Ahimsa	1-Samaj Dharma von Darshan 2- Samprajna 3-Jigyasa 4- Pancamanusamdhana 5-Samprajna	1-Page-51, 2010-11 2- vol-2 No0 4 2010 3-Vol-IV, No-3, 2011 4-Vol-I, N0-141-46, Jan-2012 5- Vol-3, N0-3,20-24, Sept-2011

\* Number of papers published in peer reviewed journals (national /international) by faculty and students. -05

\* Number of publications listed in International Database (For eg: Web of Science, Scopus, Humanities International Complete, Dare Database –

International Social Sciences Directory, EBSCO host, etc.)- Nil

\* Monographs -Nil

\* Chapter in Books -Nil

\* Books Edited -Nil

\* Books with ISBN/ISSN numbers with details of publishers -Nil

\* Citation Index -Nil

\* SNIP -Nil

\* SJR -Nil

\* Impact factor -Nil

\* h-index -Nil

20. Areas of consultancy and income generated: None

## 21. Faculty as members in:

- a) National committees: *No*
- b) International Committees: *No*
- c) Editorial Boards: *No*

## 22. Student projects

- a) Percentage of students who have done in-house projects including inter departmental/programme: *No*
- b) Percentage of students placed for projects in organizations outside the institution i.e.in Research laboratories/Industry/other agencies: *No*

23. Awards/ Recognitions received by faculty and students : *No*24. List of eminent academicians and scientists/ visitors to the department: *No*

## 25. Seminars/ Conferences/Workshops organized &amp; the source of funding:

- a) National: *No*
- b) International: *No*

## 26. Student profile programme/course wise:

Name of the course /programme ( refer question no.4)	Application received	Selected	Enrolled *M *F	Pass Percentage
2010-13	01	01	01 0	0%
2009-12	01	01	01 0	100%
2008-11	0	0	0 0	0
2007-10	0	0	0	0

M = Male, F= Female

## 27. Diversity of Students:

Name of the course	% of students from same state	% of students from other state	% of students from abroad
2010-13	100%	0	0
2009-12	100%	0	0
2008-11	100%	0	0
2007-10	100%	0	0

28. How many students have cleared national and state competitive examinations such as NET, SLET, GATE, Civil services, Defense services, etc.?:

- *Data not available*

29. Student progression:

Student Progression	Against % enrolled
UG to PG	80%
PG to M.Phil	0%
PG to Ph.D.	5%
Ph.D. to Post-Doctoral	0%
Employed *Campus Selection *Other than campus recruitment	0% <i>Data not available</i>
Entrepreneurship / Self-employment.	<i>Data not available</i>

30. Details of Infrastructural facilities

- a) Library: *Digitalized Library*
- b) Internet facilities for Staff & Students: *Internet with Wi-Fi facility for both.*
- c) Class rooms with ICT facility: *Not available*
- d) Laboratories: *Well equipped laboratories for Sc.*

31. Number of students receiving financial assistance from college, university, government or other agencies: *Students are getting UGC stipend and govt. scholarship.*

32. Details on student enrichment programmes (special lectures / workshops / seminar) with external experts: *Special lectures and seminars are being organized for student enrichment programme.*

33. Teaching methods adopted to improve student learning: *Teacher student Interactive method is adopted to improve student learning.*

34. Participation in Institutional Social Responsibility (ISR) and Extension activities: *Students of the department actively participate in extension activities through N.S.S.*

35. SWOC analysis of the department and Future plans.

### **Evaluative Report of the Department - Physics:**

The Self-evaluation of every department may be provided separately in about 3-4 pages, avoiding the repetition of the data.

1. Name of the department: *Dept of Physics*
2. Year of Establishment: *1984*
3. Names of Programmes / Courses offered (UG, PG, M.Phil., Ph.D., Integrated Masters; Integrated Ph.D. etc.): *UG*
4. Names of Interdisciplinary courses and the departments/units involved: *B.Sc. Hons/Pass*
5. Annual/ semester/choice based credit system (programme wise): *Annual*
6. Participation of the department in the courses offered by other departments: *NA*
7. Courses in collaboration with other universities, industries, foreign institutions, etc.: *NA*
8. Details of courses / programmes discontinued (if any) with reasons: *No discontinuation*
9. Number of Teaching posts

	Sanctioned	Filled
Professor	0	0
Associate Professor	0	1
Assistant Professor	1	0

14. Faculty profile with name, qualification, designation, specialization, (D.Sc./D.Litt./Ph.D. / M. Phil. etc.,)

Name	Qualification	Designation	Specialization	No. of years of Experience	No. of Ph.D students guided for last four years.
Dr. Bishwanath Raut	M.Sc. Ph.D.	Associate Professor	Electronics & Radio Physics	35years	0

11. List of senior visiting faculty: *NA*
12. Percentage of lectures delivered and practical classes handled (programme wise)  
by temporary faculty: *Nil*

13. Student -Teacher Ratio (programme wise): 37:1
14. Number of academic support staff (technical) and administrative staff; sanctioned and filled:  
Academic Support Staff- 01, Administrative Staff- 01
15. Qualifications of teaching faculty with DSc/ D.Litt/ Ph.D/ MPhil/PG: Ph.D.
16. Number of faculty with ongoing projects from a) National b) International funding agencies and grants received: Nil
17. Departmental projects funded by DST-FIST; UGC, DBT, ICSSR, etc. and total grants received: Nil
18. Research Centre /facility recognized by the University. NA
19. Publications:

\* a) Publication per faculty:

Name of the Faculty Members	Title of Paper	Name of Journal	Vol. & Page with Year
Dr. Bishwanath Raut	Parametric Studies on a double exposure single-basin solar still	International Journal of Ambient Energy	27, page-18, year-2006

- \* Number of papers published in peer reviewed journals (national /international) by faculty and students. -01
- \* Number of publications listed in International Database (For eg: Web of Science, Scopus, Humanities International Complete, Dare Database –

International Social Sciences Directory, EBSCO host, etc.)- Nil

- \* Monographs -Nil
- \* Chapter in Books -Nil
- \* Books Edited -Nil
- \* Books with ISBN/ISSN numbers with details of publishers -Nil
- \* Citation Index -Nil
- \* SNIP -Nil
- \* SJR -Nil
- \* Impact factor -Nil
- \* h-index -Nil

20. Areas of consultancy and income generated: *None*

21. Faculty as members in:

a) National committees: *No*

b) International Committees: *No*

c) Editorial Boards: *No*

22. Student projects

a) Percentage of students who have done in-house projects including inter departmental/programme: *No*

b) Percentage of students placed for projects in organizations outside the institution i.e.in Research laboratories/Industry/other agencies: *No*

23. Awards/ Recognitions received by faculty and students : *No*

24. List of eminent academicians and scientists/ visitors to the department: *No*

25. Seminars/ Conferences/Workshops organized & the source of funding:

a) National: *No*

b) International: *No*

26. Student profile programme/course wise:

Name of the course /programme ( refer question no.4)	Application received	Selected	Enrolled *M *F	Pass Percentage
2010-13	01	01	01 0	0%
2009-12	02	02	01 01	50%
2008-11	04	04	02 02	100%
2007-10	01	01	0 01	0%

M = Male, F= Female

27. Diversity of Students:

Name of the course	% of students from same state	% of students from other state	% of students from abroad
2010-13	100%	0	0
2009-12	100%	0	0

2008-11	100%	0	0
2007-10	100%	0	0

28. How many students have cleared national and state competitive examinations such as NET, SLET, GATE, Civil services, Defense services, etc.?:

*- Data not available*

29. Student progression:

Student Progression	Against % enrolled
UG to PG	80%
PG to M.Phil	0%
PG to Ph.D.	5%
Ph.D. to Post-Doctoral	0%
Employed *Campus Selection *Other than campus recruitment	0% <i>Data not available</i>
Entrepreneurship / Self-employment.	<i>Data not available</i>

30. Details of Infrastructural facilities

- a) Library: *Digitalized Library*
- b) Internet facilities for Staff & Students: *Internet with Wi-Fi facility for both.*
- c) Class rooms with ICT facility: *Not available*
- d) Laboratories: *Well equipped laboratories for Sc.*

31. Number of students receiving financial assistance from college, university, government or other agencies: *Students are getting UGC stipend and govt. scholarship.*

32. Details on student enrichment programmes (special lectures / workshops / seminar) with external experts: *Special lectures and seminars are being organized for student enrichment programme.*

33. Teaching methods adopted to improve student learning: *Teacher student Interactive method is adopted to improve student learning.*

34. Participation in Institutional Social Responsibility (ISR) and Extension activities: *Students of the department actively participate in extension activities through N.S.S.*

35. SWOC analysis of the department and Future plans.



### **Evaluative Report of the Department - Botany:**

The Self-evaluation of every department may be provided separately in about 3-4 pages, avoiding the repetition of the data.

1. Name of the department: *Dept of Botany*
2. Year of Establishment: *1984*
3. Names of Programmes / Courses offered (UG, PG, M.Phil., Ph.D., Integrated Masters; Integrated Ph.D. etc.): *UG*
4. Names of Interdisciplinary courses and the departments/units involved: *B.Sc. Hons/Pass*
5. Annual/ semester/choice based credit system (programme wise): *Annual*
6. Participation of the department in the courses offered by other departments: *NA*
7. Courses in collaboration with other universities, industries, foreign institutions, etc.: *NA*
8. Details of courses / programmes discontinued (if any) with reasons: *No discontinuation*
9. Number of Teaching posts

	Sanctioned	Filled
Professor	0	0
Associate Professor	0	1
Assistant Professor	1	0

15. Faculty profile with name, qualification, designation, specialization, (D.Sc./D.Litt./Ph.D. / M. Phil. etc.,)

Name	Qualification	Designation	Specialization	No. of years of Experience	No. of Ph.D students guided for last four years.
Dr. Madan Jha	M.Sc. Ph.D	Associate Professor	Cytoi-genetics & Plan Breeding	34years	One

11. List of senior visiting faculty: *NA*
12. Percentage of lectures delivered and practical classes handled (programme wise) by temporary faculty: *Nil*

13. Student -Teacher Ratio (programme wise): *4:1*
14. Number of academic support staff (technical) and administrative staff; sanctioned and filled:  
*Academic Support Staff- 01, Administrative Staff- 01*
15. Qualifications of teaching faculty with DSc/ D.Litt/ Ph.D/ MPhil/PG: *Ph.D.*
16. Number of faculty with ongoing projects from a) National b) International funding agencies and grants received: *Nil*
17. Departmental projects funded by DST-FIST; UGC, DBT, ICSSR, etc. and total grants received: *Nil*

18. Research Centre /facility recognized by the University. *NA*

19. Publications:

\* a) Publication per faculty:

Name of the Faculty Members	Title of Paper	Name of Journal	Vol. & Page with Year
Dr. Madan Jha	0	0	0

\* Number of papers published in peer reviewed journals (national /international) by faculty and students. *-Nil*

\* Number of publications listed in International Database (For eg: Web of Science, Scopus, Humanities International Complete, Dare Database –

International Social Sciences Directory, EBSCO host, etc.)- *Nil*

\* Monographs *-Nil*

\* Chapter in Books *-Nil*

\* Books Edited *-Nil*

\* Books with ISBN/ISSN numbers with details of publishers *-Nil*

\* Citation Index *-Nil*

\* SNIP *-Nil*

\* SJR *-Nil*

\* Impact factor *-Nil*

\* h-index *-Nil*

20. Areas of consultancy and income generated: *None*

21. Faculty as members in:

a) National committees: *No*

b) International Committees: *No*

c) Editorial Boards: *No*

22. Student projects

a) Percentage of students who have done in-house projects including inter departmental/programme: *No*

b) Percentage of students placed for projects in organizations outside the institution i.e.in Research laboratories/Industry/other agencies: *No*

23. Awards/ Recognitions received by faculty and students : *No*

24. List of eminent academicians and scientists/ visitors to the department: *No*

25. Seminars/ Conferences/Workshops organized & the source of funding:

a) National: *No*

b) International: *No*

26. Student profile programme/course wise:

Name of the course /programme ( refer question no.4)	Application received	Selected	Enrolled *M *F	Pass Percentage
2010-13	0	0	0 0	0%
2009-12	01	01	01 0	0%
2008-11	0	0	0 0	0%
2007-10	0	0	0	0

M = Male, F= Female

27. Diversity of Students:

Name of the course	% of students from same state	% of students from other state	% of students from abroad
2010-13	100%	0	0
2009-12	100%	0	0
2008-11	100%	0	0
2007-10	100%	0	0

28. How many students have cleared national and state competitive examinations such as NET, SLET, GATE, Civil services, Defense services, etc.?:

- *Data not available*

29. Student progression:

Student Progression	Against % enrolled
UG to PG	80%
PG to M.Phil	0%
PG to Ph.D.	5%
Ph.D. to Post-Doctoral	0%
Employed *Campus Selection *Other than campus recruitment	0% <i>Data not available</i>
Entrepreneurship / Self-employment.	<i>Data not available</i>

30. Details of Infrastructural facilities

- a) Library: *Digitalized Library*
- b) Internet facilities for Staff & Students: *Internet with Wi-Fi facility for both.*
- c) Class rooms with ICT facility: *Not available*
- d) Laboratories: *Well equipped laboratories for Sc.*

31. Number of students receiving financial assistance from college, university, government or other agencies: *Students are getting UGC stipend and govt. scholarship.*

32. Details on student enrichment programmes (special lectures / workshops / seminar) with external experts: *Special lectures and seminars are being organized for student enrichment programme.*

33. Teaching methods adopted to improve student learning: *Teacher student Interactive method is adopted to improve student learning.*

34. Participation in Institutional Social Responsibility (ISR) and Extension activities: *Students of the department actively participate in extension activities through N.S.S.*

35. SWOC analysis of the department and Future plans.

### **Evaluative Report of the Department - Zoology:**

The Self-evaluation of every department may be provided separately in about 3-4 pages, avoiding the repetition of the data.

1. Name of the department: *Dept of Zoology*
2. Year of Establishment: *1984*
3. Names of Programmes / Courses offered (UG, PG, M.Phil., Ph.D., Integrated Masters; Integrated Ph.D. etc.): *UG*
4. Names of Interdisciplinary courses and the departments/units involved: *B.Sc. Hons/Pass*
5. Annual/ semester/choice based credit system (programme wise): *Annual*
6. Participation of the department in the courses offered by other departments: *NA*
7. Courses in collaboration with other universities, industries, foreign institutions, etc.: *NA*
8. Details of courses / programmes discontinued (if any) with reasons: *No discontinuation*
9. Number of Teaching posts

	Sanctioned	Filled
Professor	0	0
Associate Professor	0	1
Assistant Professor	1	0

16. Faculty profile with name, qualification, designation, specialization, (D.Sc./D.Litt./Ph.D. / M. Phil. etc.,)

Name	Qualification	Designation	Specialization	No. of years of Experience	No. of Ph.D students guided for last four years.
Prof. Satya Narain Jha	M.Sc.	Associate Professor	American Literature	35years	Nil

11. List of senior visiting faculty: *NA*
12. Percentage of lectures delivered and practical classes handled (programme wise)  
by temporary faculty: *Nil*

13. Student -Teacher Ratio (programme wise): 14:1
14. Number of academic support staff (technical) and administrative staff; sanctioned and filled:  
*Academic Support Staff- Nil, Administrative Staff- Nil*
15. Qualifications of teaching faculty with DSc/ D.Litt/ Ph.D/ MPhil/PG: *PG*
16. Number of faculty with ongoing projects from a) National b) International funding agencies and grants received: *Nil*
17. Departmental projects funded by DST-FIST; UGC, DBT, ICSSR, etc. and total grants received: *Nil*

18. Research Centre /facility recognized by the University. *NA*

19. Publications:

\* a) Publication per faculty:

Name of the Faculty Members	Title of Paper	Name of Journal	Vol. & Page with Year
Prof. Satya Narain Jha			

\* Number of papers published in peer reviewed journals (national /international) by faculty and students. *-Nil*

\* Number of publications listed in International Database (For eg: Web of Science, Scopus, Humanities International Complete, Dare Database –

International Social Sciences Directory, EBSCO host, etc.)- *Nil*

- \* Monographs *-Nil*
- \* Chapter in Books *-Nil*
- \* Books Edited *-Nil*
- \* Books with ISBN/ISSN numbers with details of publishers *-Nil*
- \* Citation Index *-Nil*
- \* SNIP *-Nil*
- \* SJR *-Nil*
- \* Impact factor *-Nil*
- \* h-index *-Nil*

20. Areas of consultancy and income generated: *None*

21. Faculty as members in:

a) National committees: *No*

b) International Committees: *No*

c) Editorial Boards: *No*

22. Student projects

a) Percentage of students who have done in-house projects including inter departmental/programme: *No*

b) Percentage of students placed for projects in organizations outside the institution i.e.in Research laboratories/Industry/other agencies: *No*

23. Awards/ Recognitions received by faculty and students : *No*

24. List of eminent academicians and scientists/ visitors to the department: *No*

25. Seminars/ Conferences/Workshops organized & the source of funding:

a) National: *No*

b) International: *No*

26. Student profile programme/course wise:

Name of the course /programme ( refer question no.4)	Application received	Selected	Enrolled *M *F	Pass Percentage
2010-13	02	02	02 0	0%
2009-12	02	02	01 01	100%
2008-11	0	0	0 0	0%
2007-10	02	02	01 01	50%

M = Male, F= Female

27. Diversity of Students:

Name of the course	% of students from same state	% of students from other state	% of students from abroad
2010-13	100%	0	0
2009-12	100%	0	0
2008-11	100%	0	0
2007-10	100%	0	0

28. How many students have cleared national and state competitive examinations such as NET, SLET, GATE, Civil services, Defense services, etc.?:

- *Data not available*

29. Student progression:

Student Progression	Against % enrolled
UG to PG	80%
PG to M.Phil	0%
PG to Ph.D.	5%
Ph.D. to Post-Doctoral	0%
Employed *Campus Selection *Other than campus recruitment	0% <i>Data not available</i>
Entrepreneurship / Self-employment.	<i>Data not available</i>

30. Details of Infrastructural facilities

- a) Library: *Digitalized Library*
- b) Internet facilities for Staff & Students: *Internet with Wi-Fi facility for both.*
- c) Class rooms with ICT facility: *Not available*
- d) Laboratories: *Well equipped laboratories for Sc.*

31. Number of students receiving financial assistance from college, university, government or other agencies: *Students are getting UGC stipend and govt. scholarship.*

32. Details on student enrichment programmes (special lectures / workshops / seminar) with external experts: *Special lectures and seminars are being organized for student enrichment programme.*

33. Teaching methods adopted to improve student learning: *Teacher student Interactive method is adopted to improve student learning.*

34. Participation in Institutional Social Responsibility (ISR) and Extension activities: *Students of the department actively participate in extension activities through N.S.S.*

35. SWOC analysis of the department and Future plans.



### **Evaluative Report of the Department - Maithili:**

The Self-evaluation of every department may be provided separately in about 3-4 pages, avoiding the repetition of the data.

1. Name of the department: *Dept of Maithili*
2. Year of Establishment: *1977*
3. Names of Programmes / Courses offered (UG, PG, M.Phil., Ph.D., Integrated Masters; Integrated Ph.D. etc.): *UG*
4. Names of Interdisciplinary courses and the departments/units involved: *B.A. Hons/Pass*
5. Annual/ semester/choice based credit system (programme wise): *Annual*
6. Participation of the department in the courses offered by other departments: *NA*
7. Courses in collaboration with other universities, industries, foreign institutions, etc.: *NA*
8. Details of courses / programmes discontinued (if any) with reasons: *No discontinuation*
9. Number of Teaching posts

	Sanctioned	Filled
Professor	0	0
Associate Professor	0	1
Assistant Professor	3	0

17. Faculty profile with name, qualification, designation, specialization, (D.Sc./D.Litt./Ph.D. / M. Phil. etc.,)

Name	Qualification	Designation	Specialization	No. of years of Experience	No. of Ph.D students guided for last four years.
Dr. Deo Kant Mishra	M.A.P h.D	Associate Professor	Vidyapati	31 years	Nil

11. List of senior visiting faculty: *NA*
12. Percentage of lectures delivered and practical classes handled (programme wise)  
by temporary faculty: *Nil*

13. Student -Teacher Ratio (programme wise): *32:1*
14. Number of academic support staff (technical) and administrative staff; sanctioned and filled:  
*Academic Support Staff- Nil, Administrative Staff- Nil*
15. Qualifications of teaching faculty with DSc/ D.Litt/ Ph.D/ MPhil/PG: *Ph.D.*
16. Number of faculty with ongoing projects from a) National b) International funding agencies and grants received: *Nil*
17. Departmental projects funded by DST-FIST; UGC, DBT, ICSSR, etc. and total grants received: *Nil*
18. Research Centre /facility recognized by the University. *NA*
19. Publications:
- \* a) Publication per faculty:

Name of the Faculty Members	Title of Paper	Name of Journal	Vol. & Page with Year
-----------------------------	----------------	-----------------	-----------------------

- b) Percentage of students placed for projects in organizations outside the institution i.e.in Research laboratories/Industry/other agencies: *No*

23. Awards/ Recognitions received by faculty and students : *No*
24. List of eminent academicians and scientists/ visitors to the department: *No*
25. Seminars/ Conferences/Workshops organized & the source of funding:
- a) National: *1- Maithili Sahityak Vikas mein Madhepur Parisarak jogdan- funded H.P.S.College, Madhepur*
- 2-Harimohan Jha Hirth Centenary Seminar organized by Sahitya Akademi, New Delhi (18-19 Sep,2008)*
- b) International: *No*

26. Student profile programme/course wise:

Name of the course /programme ( refer question no.4)	Application received	Selected	Enrolled *M *F	Pass Percentage
2010-13	08	08	01 07	88%
2009-12	18	18	09 09	50%
2008-11	09	09	04 05	56%
2007-10	10	10	0 10	50%

M = Male, F= Female

## 27. Diversity of Students:

Name of the course	% of students from same state	% of students from other state	% of students from abroad
2010-13	100%	0	0
2009-12	100%	0	0
2008-11	100%	0	0
2007-10	100%	0	0

## 28. How many students have cleared national and state competitive examinations such as NET, SLET, GATE, Civil services, Defense services, etc.?:

- *Data not available*

## 29. Student progression:

Student Progression	Against % enrolled
UG to PG	80%
PG to M.Phil	0%
PG to Ph.D.	5%
Ph.D. to Post-Doctoral	0%
Employed *Campus Selection *Other than campus recruitment	0% <i>Data not available</i>
Entrepreneurship / Self-employment.	<i>Data not available</i>

## 30. Details of Infrastructural facilities

- a) Library: *Digitalized Library*
- b) Internet facilities for Staff & Students: *Internet with Wi-Fi facility for both.*
- c) Class rooms with ICT facility: *Not available*
- d) Laboratories: *Well equipped laboratories for Sc.*

31. Number of students receiving financial assistance from college, university, government or other agencies: *Students are getting UGC stipend and govt. scholarship.*32. Details on student enrichment programmes (special lectures / workshops / seminar) with external experts: *Special lectures and seminars are being organized for student enrichment programme.*

33. Teaching methods adopted to improve student learning: *Teacher student Interactive method is adopted to improve student learning.*
34. Participation in Institutional Social Responsibility (ISR) and Extension activities:  
*Students of the department actively participate in extension activities through N.S.S.*
35. SWOC analysis of the department and Future plans.

### **Evaluative Report of the Department - Mathematics:**

The Self-evaluation of every department may be provided separately in about 3-4 pages, avoiding the repetition of the data.

1. Name of the department: *Dept of Mathematics*
2. Year of Establishment: *1977*
3. Names of Programmes / Courses offered (UG, PG, M.Phil., Ph.D., Integrated Masters; Integrated Ph.D. etc.): *UG*
4. Names of Interdisciplinary courses and the departments/units involved: *B.Sc. Hons/Pass*
5. Annual/ semester/choice based credit system (programme wise): *Annual*
6. Participation of the department in the courses offered by other departments: *NA*
7. Courses in collaboration with other universities, industries, foreign institutions, etc.: *NA*
8. Details of courses / programmes discontinued (if any) with reasons: *No discontinuation*
9. Number of Teaching posts

	Sanctioned	Filled
Professor	0	0
Associate Professor	0	0
Assistant Professor	1	0

18. Faculty profile with name, qualification, designation, specialization, (D.Sc./D.Litt./Ph.D. / M. Phil. etc.,)

Name	Qualification	Designation	Specialization	No. of years of Experience	No. of Ph.D students guided for last four years.

11. List of senior visiting faculty: *NA*

12. Percentage of lectures delivered and practical classes handled (programme wise)

by temporary faculty: *Nil*

13. Student -Teacher Ratio (programme wise): *55:0*

14. Number of academic support staff (technical) and administrative staff; sanctioned and filled:  
*Academic Support Staff- Nil, Administrative Staff- Nil*

15. Qualifications of teaching faculty with DSc/ D.Litt/ Ph.D/ MPhil/PG: *Nil*

16. Number of faculty with ongoing projects from a) National b) International funding agencies and grants received: *Nil*

17. Departmental projects funded by DST-FIST; UGC, DBT, ICSSR, etc. and total grants received: *Nil*

18. Research Centre /facility recognized by the University. *NA*

19. Publications:

\* a) Publication per faculty:

Name of the Faculty Members	Title of Paper	Name of Journal	Vol. & Page with Year

\* Number of papers published in peer reviewed journals (national /international) by faculty and students. *-Nil*

\* Number of publications listed in International Database (For eg: Web of Science, Scopus, Humanities International Complete, Dare Database –

International Social Sciences Directory, EBSCO host, etc.)- *Nil*

\* Monographs *-Nil*

\* Chapter in Books *-Nil*

\* Books Edited *-Nil*

\* Books with ISBN/ISSN numbers with details of publishers *-Nil*

\* Citation Index *-Nil*

\* SNIP *-Nil*

\* SJR *-Nil*

\* Impact factor *-Nil*

\* h-index *-Nil*

20. Areas of consultancy and income generated: *None*

21. Faculty as members in:

a) National committees: *No*

b) International Committees: *No*

c) Editorial Boards: *No*

22. Student projects

a) Percentage of students who have done in-house projects including inter departmental/programme: *No*

b) Percentage of students placed for projects in organizations outside the institution i.e.in Research laboratories/Industry/other agencies: *No*

23. Awards/ Recognitions received by faculty and students : *No*

24. List of eminent academicians and scientists/ visitors to the department: *No*

25. Seminars/ Conferences/Workshops organized & the source of funding:

a) National: *No*

b) International: *No*

26. Student profile programme/course wise:

Name of the course /programme ( refer question no.4)	Application received	Selected	Enrolled *M *F	Pass Percentage
2010-13	04	04	03 01	25%
2009-12	0	0	0 0	0
2008-11	0	0	0 0	0
2007-10	02	02	02 01	50%

M = Male, F= Female

## 27. Diversity of Students:

Name of the course	% of students from same state	% of students from other state	% of students from abroad
2010-13	100%	0	0
2009-12	100%	0	0
2008-11	100%	0	0
2007-10	100%	0	0

## 28. How many students have cleared national and state competitive examinations such as NET, SLET, GATE, Civil services, Defense services, etc.?:

- *Data not available*

## 29. Student progression:

Student Progression	Against % enrolled
UG to PG	80%
PG to M.Phil	0%
PG to Ph.D.	5%
Ph.D. to Post-Doctoral	0%
Employed *Campus Selection *Other than campus recruitment	0% <i>Data not available</i>
Entrepreneurship / Self-employment.	<i>Data not available</i>

## 30. Details of Infrastructural facilities

- a) Library: *Digitalized Library*
- b) Internet facilities for Staff & Students: *Internet with Wi-Fi facility for both.*
- c) Class rooms with ICT facility: *Not available*
- d) Laboratories: *Well equipped laboratories for Sc.*

31. Number of students receiving financial assistance from college, university, government or other agencies: *Students are getting UGC stipend and govt. scholarship.*32. Details on student enrichment programmes (special lectures / workshops / seminar) with external experts: *Special lectures and seminars are being organized for student enrichment programme.*

33. Teaching methods adopted to improve student learning: *Teacher student Interactive method is adopted to improve student learning.*
34. Participation in Institutional Social Responsibility (ISR) and Extension activities:  
*Students of the department actively participate in extension activities through N.S.S.*
35. SWOC analysis of the department and Future plans.

### **Evaluative Report of the Department - Chemistry:**

The Self-evaluation of every department may be provided separately in about 3-4 pages, avoiding the repetition of the data.

1. Name of the department: *Dept of Chemistry*
2. Year of Establishment: *1984*
3. Names of Programmes / Courses offered (UG, PG, M.Phil., Ph.D., Integrated Masters; Integrated Ph.D. etc.): *UG*
4. Names of Interdisciplinary courses and the departments/units involved: *B.Sc. Hons/Pass*
5. Annual/ semester/choice based credit system (programme wise): *Annual*
6. Participation of the department in the courses offered by other departments: *NA*
7. Courses in collaboration with other universities, industries, foreign institutions, etc.: *NA*
8. Details of courses / programmes discontinued (if any) with reasons: *No discontinuation*
9. Number of Teaching posts

	Sanctioned	Filled
Professor	0	0
Associate Professor	0	0
Assistant Professor	1	0

19. Faculty profile with name, qualification, designation, specialization, (D.Sc./D.Litt./Ph.D. / M. Phil. etc.,)



Name	Qualification	Designation	Specialization	No. of years of Experience	No. of Ph.D students guided for last four years.

11. List of senior visiting faculty: *NA*

12. Percentage of lectures delivered and practical classes handled (programme wise)

by temporary faculty: *Nil*

13. Student -Teacher Ratio (programme wise): *48:0*

14. Number of academic support staff (technical) and administrative staff; sanctioned and filled:  
*Academic Support Staff- Nil, Administrative Staff- Nil*

15. Qualifications of teaching faculty with DSc/ D.Litt/ Ph.D/ MPhil/PG: *Nil*

16. Number of faculty with ongoing projects from a) National b) International funding agencies and grants received: *Nil*

17. Departmental projects funded by DST-FIST; UGC, DBT, ICSSR, etc. and total grants received: *Nil*

18. Research Centre /facility recognized by the University. *NA*

19. Publications:

\* a) Publication per faculty:

Name of the Faculty Members	Title of Paper	Name of Journal	Vol. & Page with Year

\* Number of papers published in peer reviewed journals (national /international) by faculty and students. *-Nil*

\* Number of publications listed in International Database (For eg: Web of Science, Scopus, Humanities International Complete, Dare Database –

International Social Sciences Directory, EBSCO host, etc.)- *Nil*

\* Monographs *-Nil*

\* Chapter in Books *-Nil*

\* Books Edited *-Nil*

\* Books with ISBN/ISSN numbers with details of publishers *-Nil*

\* Citation Index *-Nil*

\* SNIP *-Nil*

\* SJR *-Nil*

\* Impact factor *-Nil*

\* h-index *-Nil*

20. Areas of consultancy and income generated: *None*

21. Faculty as members in:

a) National committees: *No*

b) International Committees: *No*

c) Editorial Boards: *No*

22. Student projects

a) Percentage of students who have done in-house projects including inter departmental/programme: *No*

b) Percentage of students placed for projects in organizations outside the institution i.e.in Research laboratories/Industry/other agencies: *No*

23. Awards/ Recognitions received by faculty and students : *No*

24. List of eminent academicians and scientists/ visitors to the department: *No*

25. Seminars/ Conferences/Workshops organized & the source of funding:

a) National: *No*

b) International: *No*

26. Student profile programme/course wise:

Name of the course /programme ( refer question no.4)	Application received	Selected	Enrolled *M *F	Pass Percentage
2010-13	01	01	01 0	0%
2009-12	02	02	01 01	100%
2008-11	0	0	0 0	0
2007-10	02	02	02 0	50%

M = Male, F= Female

## 27. Diversity of Students:

Name of the course	% of students from same state	% of students from other state	% of students from abroad
2010-13	100%	0	0
2009-12	100%	0	0
2008-11	100%	0	0
2007-10	100%	0	0

## 28. How many students have cleared national and state competitive examinations such as NET, SLET, GATE, Civil services, Defense services, etc.?:

- *Data not available*

## 29. Student progression:

Student Progression	Against % enrolled
UG to PG	80%
PG to M.Phil	0%
PG to Ph.D.	5%
Ph.D. to Post-Doctoral	0%
Employed *Campus Selection *Other than campus recruitment	0% <i>Data not available</i>
Entrepreneurship / Self-employment.	<i>Data not available</i>

## 30. Details of Infrastructural facilities

- a) Library: *Digitalized Library*
- b) Internet facilities for Staff & Students: *Internet with Wi-Fi facility for both.*
- c) Class rooms with ICT facility: *Not available*
- d) Laboratories: *Well equipped laboratories for Sc.*

31. Number of students receiving financial assistance from college, university, government or other agencies: *Students are getting UGC stipend and govt. scholarship.*32. Details on student enrichment programmes (special lectures / workshops / seminar) with external experts: *Special lectures and seminars are being organized for student enrichment programme.*

33. Teaching methods adopted to improve student learning: *Teacher student Interactive method is adopted to improve student learning.*
34. Participation in Institutional Social Responsibility (ISR) and Extension activities:  
*Students of the department actively participate in extension activities through N.S.S.*
35. SWOC analysis of the department and Future plans.

### **Evaluative Report of the Department ? Political Science:**

The Self-evaluation of every department may be provided separately in about 3-4 pages, avoiding the repetition of the data.

1. Name of the department: *Dept of Political Science*
2. Year of Establishment: *1977*
3. Names of Programmes / Courses offered (UG, PG, M.Phil., Ph.D., Integrated Masters; Integrated Ph.D. etc.): *UG*
4. Names of Interdisciplinary courses and the departments/units involved: *B.A. Hons/Pass*
5. Annual/ semester/choice based credit system (programme wise): *Annual*
6. Participation of the department in the courses offered by other departments: *NA*
7. Courses in collaboration with other universities, industries, foreign institutions, etc.: *NA*
8. Details of courses / programmes discontinued (if any) with reasons: *No discontinuation*
9. Number of Teaching posts

	Sanctioned	Filled
Professor	0	0
Associate Professor	0	0
Assistant Professor	3	0

20. Faculty profile with name, qualification, designation, specialization, (D.Sc./D.Litt./Ph.D. / M. Phil. etc.,)

Name	Qualification	Designation	Specialization	No. of years of Experience	No. of Ph.D students guided for last four years.

11. List of senior visiting faculty: *NA*

12. Percentage of lectures delivered and practical classes handled (programme wise)

by temporary faculty: *Nil*

13. Student -Teacher Ratio (programme wise): *116:0*

14. Number of academic support staff (technical) and administrative staff; sanctioned and filled:  
*Academic Support Staff- Nil, Administrative Staff- Nil*

15. Qualifications of teaching faculty with DSc/ D.Litt/ Ph.D/ MPhil/PG: *Nil*

16. Number of faculty with ongoing projects from a) National b) International funding agencies and grants received: *Nil*

17. Departmental projects funded by DST-FIST; UGC, DBT, ICSSR, etc. and total grants received: *Nil*

18. Research Centre /facility recognized by the University. *NA*

19. Publications:

\* a) Publication per faculty:

Name of the Faculty Members	Title of Paper	Name of Journal	Vol. & Page with Year

\* Number of papers published in peer reviewed journals (national /international) by faculty and students. *-Nil*

\* Number of publications listed in International Database (For eg: Web of Science, Scopus, Humanities International Complete, Dare Database –

International Social Sciences Directory, EBSCO host, etc.)- *Nil*

\* Monographs *-Nil*

\* Chapter in Books *-Nil*

\* Books Edited *-Nil*

\* Books with ISBN/ISSN numbers with details of publishers *-Nil*

* Citation Index	-Nil
* SNIP	-Nil
* SJR	-Nil
* Impact factor	-Nil
* h-index	-Nil

20. Areas of consultancy and income generated: *None*

21. Faculty as members in:

- a) National committees: *No*
- b) International Committees: *No*
- c) Editorial Boards: *No*

22. Student projects

- a) Percentage of students who have done in-house projects including inter departmental/programme: *No*
- b) Percentage of students placed for projects in organizations outside the institution i.e.in Research laboratories/Industry/other agencies: *No*

23. Awards/ Recognitions received by faculty and students : *No*

24. List of eminent academicians and scientists/ visitors to the department: *No*

25. Seminars/ Conferences/Workshops organized & the source of funding:

- a) National: *No*
- b) International: *No*

26. Student profile programme/course wise:

Name of the course /programme ( refer question no.4)	Application received	Selected	Enrolled *M *F	Pass Percentage
2010-13	23	23	17 06	52%
2009-12	16	16	10 06	63%
2008-11	44	44	33 11	66%
2007-10	21	21	19 02	52%

M = Male, F= Female

## 27. Diversity of Students:

Name of the course	% of students from same state	% of students from other state	% of students from abroad
2010-13	100%	0	0
2009-12	100%	0	0
2008-11	100%	0	0
2007-10	100%	0	0

## 28. How many students have cleared national and state competitive examinations such as NET, SLET, GATE, Civil services, Defense services, etc.?:

- *Data not available*

## 29. Student progression:

Student Progression	Against % enrolled
UG to PG	80%
PG to M.Phil	0%
PG to Ph.D.	5%
Ph.D. to Post-Doctoral	0%
Employed *Campus Selection *Other than campus recruitment	0% <i>Data not available</i>
Entrepreneurship / Self-employment.	<i>Data not available</i>

## 30. Details of Infrastructural facilities

- a) Library: *Digitalized Library*
- b) Internet facilities for Staff & Students: *Internet with Wi-Fi facility for both.*
- c) Class rooms with ICT facility: *Not available*
- d) Laboratories: *Well equipped laboratories for Sc.*

31. Number of students receiving financial assistance from college, university, government or other agencies: *Students are getting UGC stipend and govt. scholarship.*32. Details on student enrichment programmes (special lectures / workshops / seminar) with external experts: *Special lectures and seminars are being organized for student enrichment programme.*

33. Teaching methods adopted to improve student learning: *Teacher student Interactive method is adopted to improve student learning.*
34. Participation in Institutional Social Responsibility (ISR) and Extension activities:  
*Students of the department actively participate in extension activities through N.S.S.*
35. SWOC analysis of the department and Future plans.

### **Evaluative Report of the Department ? Psychology:**

The Self-evaluation of every department may be provided separately in about 3-4 pages, avoiding the repetition of the data.

1. Name of the department: *Dept of Psychology*
2. Year of Establishment: *1977*
3. Names of Programmes / Courses offered (UG, PG, M.Phil., Ph.D., Integrated Masters; Integrated Ph.D. etc.): *UG*
4. Names of Interdisciplinary courses and the departments/units involved: *B.A. Hons/Pass*
5. Annual/ semester/choice based credit system (programme wise): *Annual*
6. Participation of the department in the courses offered by other departments: *NA*
7. Courses in collaboration with other universities, industries, foreign institutions, etc.: *NA*
8. Details of courses / programmes discontinued (if any) with reasons: *No discontinuation*
9. Number of Teaching posts

	Sanctioned	Filled
Professor	0	0
Associate Professor	0	0
Assistant Professor	1	0

21. Faculty profile with name, qualification, designation, specialization, (D.Sc./D.Litt./Ph.D. / M. Phil. etc.,)



Name	Qualification	Designation	Specialization	No. of years of Experience	No. of Ph.D students guided for last four years.

11. List of senior visiting faculty: *NA*

12. Percentage of lectures delivered and practical classes handled (programme wise)

by temporary faculty: *Nil*

13. Student -Teacher Ratio (programme wise): *175:0*

14. Number of academic support staff (technical) and administrative staff; sanctioned and filled:  
*Academic Support Staff- Nil, Administrative Staff- Nil*

15. Qualifications of teaching faculty with DSc/ D.Litt/ Ph.D/ MPhil/PG: *Nil*

16. Number of faculty with ongoing projects from a) National b) International funding agencies and grants received: *Nil*

17. Departmental projects funded by DST-FIST; UGC, DBT, ICSSR, etc. and total grants received: *Nil*

18. Research Centre /facility recognized by the University. *NA*

19. Publications:

\* a) Publication per faculty:

Name of the Faculty Members	Title of Paper	Name of Journal	Vol. & Page with Year

\* Number of papers published in peer reviewed journals (national /international) by faculty and students. *-Nil*

\* Number of publications listed in International Database (For eg: Web of Science, Scopus, Humanities International Complete, Dare Database –

International Social Sciences Directory, EBSCO host, etc.)- *Nil*

\* Monographs *-Nil*

\* Chapter in Books *-Nil*

\* Books Edited *-Nil*

\* Books with ISBN/ISSN numbers with details of publishers *-Nil*

* Citation Index	-Nil
* SNIP	-Nil
* SJR	-Nil
* Impact factor	-Nil
* h-index	-Nil

20. Areas of consultancy and income generated: *None*

21. Faculty as members in:

- a) National committees: *No*
- b) International Committees: *No*
- c) Editorial Boards: *No*

22. Student projects

- a) Percentage of students who have done in-house projects including inter departmental/programme: *No*
- b) Percentage of students placed for projects in organizations outside the institution i.e.in Research laboratories/Industry/other agencies: *No*

23. Awards/ Recognitions received by faculty and students : *No*

24. List of eminent academicians and scientists/ visitors to the department: *No*

25. Seminars/ Conferences/Workshops organized & the source of funding:

- a) National: *No*
- b) International: *No*

26. Student profile programme/course wise:

Name of the course /programme ( refer question no.4)	Application received	Selected	Enrolled *M *F	Pass Percentage
2010-13	28	28	18 10	54%
2009-12	18	18	06 12	39%
2008-11	23	23	03 20	78%
2007-10	03	03	01 02	67%

M = Male, F= Female

## 27. Diversity of Students:

Name of the course	% of students from same state	% of students from other state	% of students from abroad
2010-13	100%	0	0
2009-12	100%	0	0
2008-11	100%	0	0
2007-10	100%	0	0

## 28. How many students have cleared national and state competitive examinations such as NET, SLET, GATE, Civil services, Defense services, etc.?:

- *Data not available*

## 29. Student progression:

Student Progression	Against % enrolled
UG to PG	80%
PG to M.Phil	0%
PG to Ph.D.	5%
Ph.D. to Post-Doctoral	0%
Employed *Campus Selection *Other than campus recruitment	0% <i>Data not available</i>
Entrepreneurship / Self-employment.	<i>Data not available</i>

## 30. Details of Infrastructural facilities

- a) Library: *Digitalized Library*
- b) Internet facilities for Staff & Students: *Internet with Wi-Fi facility for both.*
- c) Class rooms with ICT facility: *Not available*
- d) Laboratories: *Well equipped laboratories for Sc.*

31. Number of students receiving financial assistance from college, university, government or other agencies: *Students are getting UGC stipend and govt. scholarship.*32. Details on student enrichment programmes (special lectures / workshops / seminar) with external experts: *Special lectures and seminars are being organized for student enrichment programme.*

33. Teaching methods adopted to improve student learning: *Teacher student Interactive method is adopted to improve student learning.*
34. Participation in Institutional Social Responsibility (ISR) and Extension activities:  
*Students of the department actively participate in extension activities through N.S.S.*
35. SWOC analysis of the department and Future plans.

### **Evaluative Report of the Department ? Home Science:**

The Self-evaluation of every department may be provided separately in about 3-4 pages, avoiding the repetition of the data.

1. Name of the department: *Dept of Home Science*
2. Year of Establishment: *2010*
3. Names of Programmes / Courses offered (UG, PG, M.Phil., Ph.D., Integrated Masters; Integrated Ph.D. etc.): *UG*
4. Names of Interdisciplinary courses and the departments/units involved: *B.A. Hons/Pass*
5. Annual/ semester/choice based credit system (programme wise): *Annual*
6. Participation of the department in the courses offered by other departments: *NA*
7. Courses in collaboration with other universities, industries, foreign institutions, etc.: *NA*
8. Details of courses / programmes discontinued (if any) with reasons: *No discontinuation*
9. Number of Teaching posts

	Sanctioned	Filled
Professor	0	0
Associate Professor	0	0
Assistant Professor	0	0

22. Faculty profile with name, qualification, designation, specialization, (D.Sc./D.Litt./Ph.D. / M. Phil. etc.,)

Name	Qualification	Designation	Specialization	No. of years of Experience	No. of Ph.D students guided for last four years.

11. List of senior visiting faculty: *NA*

12. Percentage of lectures delivered and practical classes handled (programme wise)

by temporary faculty: *Nil*

13. Student -Teacher Ratio (programme wise): *69:0*

14. Number of academic support staff (technical) and administrative staff; sanctioned and filled:  
*Academic Support Staff- Nil, Administrative Staff- Nil*

15. Qualifications of teaching faculty with DSc/ D.Litt/ Ph.D/ MPhil/PG: *Nil*

16. Number of faculty with ongoing projects from a) National b) International funding agencies and grants received: *Nil*

17. Departmental projects funded by DST-FIST; UGC, DBT, ICSSR, etc. and total grants received: *Nil*

18. Research Centre /facility recognized by the University. *NA*

19. Publications:

\* a) Publication per faculty:

Name of the Faculty Members	Title of Paper	Name of Journal	Vol. & Page with Year

\* Number of papers published in peer reviewed journals (national /international) by faculty and students. *-Nil*

\* Number of publications listed in International Database (For eg: Web of Science, Scopus, Humanities International Complete, Dare Database –

International Social Sciences Directory, EBSCO host, etc.)- *Nil*

\* Monographs *-Nil*

\* Chapter in Books *-Nil*

\* Books Edited *-Nil*

\* Books with ISBN/ISSN numbers with details of publishers *-Nil*

* Citation Index	-Nil
* SNIP	-Nil
* SJR	-Nil
* Impact factor	-Nil
* h-index	-Nil

20. Areas of consultancy and income generated: *None*

21. Faculty as members in:

- a) National committees: *No*
- b) International Committees: *No*
- c) Editorial Boards: *No*

22. Student projects

- a) Percentage of students who have done in-house projects including inter departmental/programme: *No*
- b) Percentage of students placed for projects in organizations outside the institution i.e.in Research laboratories/Industry/other agencies: *No*

23. Awards/ Recognitions received by faculty and students : *No*

24. List of eminent academicians and scientists/ visitors to the department: *No*

25. Seminars/ Conferences/Workshops organized & the source of funding:

- a) National: *No*
- b) International: *No*

26. Student profile programme/course wise:

Name of the course /programme ( refer question no.4)	Application received	Selected	Enrolled *M *F	Pass Percentage

M = Male, F= Female

## 27. Diversity of Students:

Name of the course	% of students from same state	% of students from other state	% of students from abroad

## 28. How many students have cleared national and state competitive examinations such as NET, SLET, GATE, Civil services, Defense services, etc.?:

- *Data not available*

## 29. Student progression:

Student Progression	Against % enrolled
UG to PG	0%
PG to M.Phil	0%
PG to Ph.D.	0%
Ph.D. to Post-Doctoral	0%
Employed *Campus Selection *Other than campus recruitment	0% <i>Data not available</i>
Entrepreneurship / Self-employment.	<i>Data not available</i>

## 30. Details of Infrastructural facilities

- a) Library: *Digitalized Library*
- b) Internet facilities for Staff & Students: *Internet with Wi-Fi facility for both.*
- c) Class rooms with ICT facility: *Not available*
- d) Laboratories: *Well equipped laboratories for Sc.*

31. Number of students receiving financial assistance from college, university, government or other agencies: *Students are getting UGC stipend and govt. scholarship.*32. Details on student enrichment programmes (special lectures / workshops / seminar) with external experts: *Special lectures and seminars are being organized for student enrichment programme.*

33. Teaching methods adopted to improve student learning: *Teacher student Interactive method is adopted to improve student learning.*
34. Participation in Institutional Social Responsibility (ISR) and Extension activities:  
*Students of the department actively participate in extension activities through N.S.S.*
35. SWOC analysis of the department and Future plans.

### **Evaluative Report of the Department ? Geography:**

The Self-evaluation of every department may be provided separately in about 3-4 pages, avoiding the repetition of the data.

1. Name of the department: *Dept of Geography*
2. Year of Establishment: *2010*
3. Names of Programmes / Courses offered (UG, PG, M.Phil., Ph.D., Integrated Masters; Integrated Ph.D. etc.): *UG*
4. Names of Interdisciplinary courses and the departments/units involved: *B.A. Hons/Pass*
5. Annual/ semester/choice based credit system (programme wise): *Annual*
6. Participation of the department in the courses offered by other departments: *NA*
7. Courses in collaboration with other universities, industries, foreign institutions, etc.: *NA*
8. Details of courses / programmes discontinued (if any) with reasons: *No discontinuation*
9. Number of Teaching posts

	Sanctioned	Filled
Professor	0	0
Associate Professor	0	0
Assistant Professor	0	0

23. Faculty profile with name, qualification, designation, specialization, (D.Sc./D.Litt./Ph.D. / M. Phil. etc.,)



Name	Qualification	Designation	Specialization	No. of years of Experience	No. of Ph.D students guided for last four years.

11. List of senior visiting faculty: *NA*

12. Percentage of lectures delivered and practical classes handled (programme wise)

by temporary faculty: *Nil*

13. Student -Teacher Ratio (programme wise): *38:0*

14. Number of academic support staff (technical) and administrative staff; sanctioned and filled:  
*Academic Support Staff- Nil, Administrative Staff- Nil*

15. Qualifications of teaching faculty with DSc/ D.Litt/ Ph.D/ MPhil/PG: *Nil*

16. Number of faculty with ongoing projects from a) National b) International funding agencies and grants received: *Nil*

17. Departmental projects funded by DST-FIST; UGC, DBT, ICSSR, etc. and total grants received: *Nil*

18. Research Centre /facility recognized by the University. *NA*

19. Publications:

\* a) Publication per faculty:

Name of the Faculty Members	Title of Paper	Name of Journal	Vol. & Page with Year

\* Number of papers published in peer reviewed journals (national /international) by faculty and students. *-Nil*

\* Number of publications listed in International Database (For eg: Web of Science, Scopus, Humanities International Complete, Dare Database –

International Social Sciences Directory, EBSCO host, etc.)- *Nil*

\* Monographs *-Nil*

\* Chapter in Books *-Nil*

\* Books Edited *-Nil*

\* Books with ISBN/ISSN numbers with details of publishers *-Nil*

* Citation Index	-Nil
* SNIP	-Nil
* SJR	-Nil
* Impact factor	-Nil
* h-index	-Nil

20. Areas of consultancy and income generated: *None*

21. Faculty as members in:

- a) National committees: *No*
- b) International Committees: *No*
- c) Editorial Boards: *No*

22. Student projects

- a) Percentage of students who have done in-house projects including inter departmental/programme: *No*
- b) Percentage of students placed for projects in organizations outside the institution i.e.in Research laboratories/Industry/other agencies: *No*

23. Awards/ Recognitions received by faculty and students : *No*

24. List of eminent academicians and scientists/ visitors to the department: *No*

25. Seminars/ Conferences/Workshops organized & the source of funding:

- a) National: *No*
- b) International: *No*

26. Student profile programme/course wise:

Name of the course /programme ( refer question no.4)	Application received	Selected	Enrolled *M *F	Pass Percentage

M = Male, F= Female

## 27. Diversity of Students:

Name of the course	% of students from same state	% of students from other state	% of students from abroad

## 28. How many students have cleared national and state competitive examinations such as NET, SLET, GATE, Civil services, Defense services, etc.?:

- *Data not available*

## 29. Student progression:

Student Progression	Against % enrolled
UG to PG	0%
PG to M.Phil	0%
PG to Ph.D.	0%
Ph.D. to Post-Doctoral	0%
Employed *Campus Selection *Other than campus recruitment	0% <i>Data not available</i>
Entrepreneurship / Self-employment.	<i>Data not available</i>

## 30. Details of Infrastructural facilities

- a) Library: *Digitalized Library*
- b) Internet facilities for Staff & Students: *Internet with Wi-Fi facility for both.*
- c) Class rooms with ICT facility: *Not available*
- d) Laboratories: *Well equipped laboratories for Sc.*

31. Number of students receiving financial assistance from college, university, government or other agencies: *Students are getting UGC stipend and govt. scholarship.*32. Details on student enrichment programmes (special lectures / workshops / seminar) with external experts: *Special lectures and seminars are being organized for student enrichment programme.*

33. Teaching methods adopted to improve student learning: *Teacher student Interactive method is adopted to improve student learning.*
34. Participation in Institutional Social Responsibility (ISR) and Extension activities:  
*Students of the department actively participate in extension activities through N.S.S.*
35. SWOC analysis of the department and Future plans.

### **Evaluative Report of the Department ? Commerce:**

The Self-evaluation of every department may be provided separately in about 3-4 pages, avoiding the repetition of the data.

1. Name of the department: *Dept of Commerce*
2. Year of Establishment: *2010*
3. Names of Programmes / Courses offered (UG, PG, M.Phil., Ph.D., Integrated Masters; Integrated Ph.D. etc.): *UG*
4. Names of Interdisciplinary courses and the departments/units involved: *B.Com. Hons/Pass*
5. Annual/ semester/choice based credit system (programme wise): *Annual*
6. Participation of the department in the courses offered by other departments: *NA*
7. Courses in collaboration with other universities, industries, foreign institutions, etc.: *NA*
8. Details of courses / programmes discontinued (if any) with reasons: *No discontinuation*
9. Number of Teaching posts

	Sanctioned	Filled
Professor	0	0
Associate Professor	0	0
Assistant Professor	0	1

24. Faculty profile with name, qualification, designation, specialization, (D.Sc./D.Litt./Ph.D. / M. Phil. etc.,)

Name	Qualification	Designation	Specialization	No. of years of Experience	No. of Ph.D students guided for last four years.
Prof. Shankar Kumar Jha	M.Com	Assistant Professor	American Literature	3 years	Nil

11. List of senior visiting faculty: *NA*
12. Percentage of lectures delivered and practical classes handled (programme wise)  
by temporary faculty: *Nil*
13. Student -Teacher Ratio (programme wise): *413:1*
14. Number of academic support staff (technical) and administrative staff; sanctioned and filled:  
*Academic Support Staff- Nil, Administrative Staff- Nil*
15. Qualifications of teaching faculty with DSc/ D.Litt/ Ph.D/ MPhil/PG: *PG*
16. Number of faculty with ongoing projects from a) National b) International funding agencies and grants received: *Nil*
17. Departmental projects funded by DST-FIST; UGC, DBT, ICSSR, etc. and total grants received: *Nil*
18. Research Centre /facility recognized by the University. *NA*
19. Publications:
- \* a) Publication per faculty:

Name of the Faculty Members	Title of Paper	Name of Journal	Vol. & Page with Year
Prof. Shankar Kumar Jha			

- \* Number of papers published in peer reviewed journals (national /international) by faculty and students. *-Nil*
- \* Number of publications listed in International Database (For eg: Web of Science, Scopus, Humanities International Complete, Dare Database –

International Social Sciences Directory, EBSCO host, etc.)- *Nil*

- \* Monographs *-Nil*
- \* Chapter in Books *-Nil*
- \* Books Edited *-Nil*

\* Books with ISBN/ISSN numbers with details of publishers *-Nil*

\* Citation Index *-Nil*

\* SNIP *-Nil*

\* SJR *-Nil*

\* Impact factor *-Nil*

\* h-index *-Nil*

20. Areas of consultancy and income generated: *None*

21. Faculty as members in:

a) National committees: *No*

b) International Committees: *No*

c) Editorial Boards: *No*

22. Student projects

a) Percentage of students who have done in-house projects including inter departmental/programme: *No*

b) Percentage of students placed for projects in organizations outside the institution i.e.in Research laboratories/Industry/other agencies: *No*

23. Awards/ Recognitions received by faculty and students : *No*

24. List of eminent academicians and scientists/ visitors to the department: *No*

25. Seminars/ Conferences/Workshops organized & the source of funding:

a) National: *No*

b) International: *No*

26. Student profile programme/course wise:

Name of the course /programme ( refer question no.4)	Application received	Selected	Enrolled *M *F	Pass Percentage

M = Male, F= Female

## 27. Diversity of Students:

Name of the course	% of students from same state	% of students from other state	% of students from abroad

## 28. How many students have cleared national and state competitive examinations such as NET, SLET, GATE, Civil services, Defense services, etc.?:

- *Data not available*

## 29. Student progression:

Student Progression	Against % enrolled
UG to PG	0%
PG to M.Phil	0%
PG to Ph.D.	0%
Ph.D. to Post-Doctoral	0%
Employed *Campus Selection *Other than campus recruitment	0% <i>Data not available</i>
Entrepreneurship / Self-employment.	<i>Data not available</i>

## 30. Details of Infrastructural facilities

- a) Library: *Digitalized Library*
- b) Internet facilities for Staff & Students: *Internet with Wi-Fi facility for both.*
- c) Class rooms with ICT facility: *Not available*
- d) Laboratories: *Well equipped laboratories for Sc.*

31. Number of students receiving financial assistance from college, university, government or other agencies: *Students are getting UGC stipend and govt. scholarship.*32. Details on student enrichment programmes (special lectures / workshops / seminar) with external experts: *Special lectures and seminars are being organized for student enrichment programme.*

33. Teaching methods adopted to improve student learning: *Teacher student Interactive method is adopted to improve student learning.*
34. Participation in Institutional Social Responsibility (ISR) and Extension activities:  
*Students of the department actively participate in extension activities through N.S.S.*
35. SWOC analysis of the department and Future plans.

### **Evaluative Report of the Department ? Sanskrit:**

The Self-evaluation of every department may be provided separately in about 3-4 pages, avoiding the repetition of the data.

1. Name of the department: *Dept of Sanskrit*
2. Year of Establishment: *1977*
3. Names of Programmes / Courses offered (UG, PG, M.Phil., Ph.D., Integrated Masters; Integrated Ph.D. etc.): *UG*
4. Names of Interdisciplinary courses and the departments/units involved: *B.A. Hons/Pass*
5. Annual/ semester/choice based credit system (programme wise): *Annual*
6. Participation of the department in the courses offered by other departments: *NA*
7. Courses in collaboration with other universities, industries, foreign institutions, etc.: *NA*
8. Details of courses / programmes discontinued (if any) with reasons: *No discontinuation*
9. Number of Teaching posts

	Sanctioned	Filled
Professor	0	0
Associate Professor	0	0
Assistant Professor	1	0

25. Faculty profile with name, qualification, designation, specialization, (D.Sc./D.Litt./Ph.D. / M. Phil. etc.,)



Name	Qualification	Designation	Specialization	No. of years of Experience	No. of Ph.D students guided for last four years.

11. List of senior visiting faculty: *NA*

12. Percentage of lectures delivered and practical classes handled (programme wise)

by temporary faculty: *Nil*

13. Student -Teacher Ratio (programme wise): *01:0*

14. Number of academic support staff (technical) and administrative staff; sanctioned and filled:  
*Academic Support Staff- Nil, Administrative Staff- Nil*

15. Qualifications of teaching faculty with DSc/ D.Litt/ Ph.D/ MPhil/PG: *Nil*

16. Number of faculty with ongoing projects from a) National b) International funding agencies and grants received: *Nil*

17. Departmental projects funded by DST-FIST; UGC, DBT, ICSSR, etc. and total grants received: *Nil*

18. Research Centre /facility recognized by the University. *NA*

19. Publications:

\* a) Publication per faculty:

Name of the Faculty Members	Title of Paper	Name of Journal	Vol. & Page with Year

\* Number of papers published in peer reviewed journals (national /international) by faculty and students. *-Nil*

\* Number of publications listed in International Database (For eg: Web of Science, Scopus, Humanities International Complete, Dare Database –

International Social Sciences Directory, EBSCO host, etc.)- *Nil*

\* Monographs *-Nil*

\* Chapter in Books *-Nil*

\* Books Edited *-Nil*

\* Books with ISBN/ISSN numbers with details of publishers *-Nil*

* Citation Index	-Nil
* SNIP	-Nil
* SJR	-Nil
* Impact factor	-Nil
* h-index	-Nil

20. Areas of consultancy and income generated: *None*

21. Faculty as members in:

- a) National committees: *No*
- b) International Committees: *No*
- c) Editorial Boards: *No*

22. Student projects

- a) Percentage of students who have done in-house projects including inter departmental/programme: *No*
- b) Percentage of students placed for projects in organizations outside the institution i.e.in Research laboratories/Industry/other agencies: *No*

23. Awards/ Recognitions received by faculty and students : *No*

24. List of eminent academicians and scientists/ visitors to the department: *No*

25. Seminars/ Conferences/Workshops organized & the source of funding:

- a) National: *No*
- b) International: *No*

26. Student profile programme/course wise:

Name of the course /programme ( refer question no.4)	Application received	Selected	Enrolled *M *F	Pass Percentage

M = Male, F= Female

## 27. Diversity of Students:

Name of the course	% of students from same state	% of students from other state	% of students from abroad

## 28. How many students have cleared national and state competitive examinations such as NET, SLET, GATE, Civil services, Defense services, etc.?:

- *Data not available*

## 29. Student progression:

Student Progression	Against % enrolled
UG to PG	80%
PG to M.Phil	0%
PG to Ph.D.	5%
Ph.D. to Post-Doctoral	0%
Employed *Campus Selection *Other than campus recruitment	0% <i>Data not available</i>
Entrepreneurship / Self-employment.	<i>Data not available</i>

## 30. Details of Infrastructural facilities

- a) Library: *Digitalized Library*
- b) Internet facilities for Staff & Students: *Internet with Wi-Fi facility for both.*
- c) Class rooms with ICT facility: *Not available*
- d) Laboratories: *Well equipped laboratories for Sc.*

31. Number of students receiving financial assistance from college, university, government or other agencies: *Students are getting UGC stipend and govt. scholarship.*32. Details on student enrichment programmes (special lectures / workshops / seminar) with external experts: *Special lectures and seminars are being organized for student enrichment programme.*

33. Teaching methods adopted to improve student learning: *Teacher student Interactive method is adopted to improve student learning.*
34. Participation in Institutional Social Responsibility (ISR) and Extension activities:  
*Students of the department actively participate in extension activities through N.S.S.*
35. SWOC analysis of the department and Future plans.

### **Evaluative Report of the Department ? Urdu:**

The Self-evaluation of every department may be provided separately in about 3-4 pages, avoiding the repetition of the data.

1. Name of the department: *Dept of Urdu*
2. Year of Establishment: *1977*
3. Names of Programmes / Courses offered (UG, PG, M.Phil., Ph.D., Integrated Masters; Integrated Ph.D. etc.): *UG*
4. Names of Interdisciplinary courses and the departments/units involved: *B.A. Hons/Pass*
5. Annual/ semester/choice based credit system (programme wise): *Annual*
6. Participation of the department in the courses offered by other departments: *NA*
7. Courses in collaboration with other universities, industries, foreign institutions, etc.: *NA*
8. Details of courses / programmes discontinued (if any) with reasons: *No discontinuation*
9. Number of Teaching posts

	Sanctioned	Filled
Professor	0	0
Associate Professor	0	0
Assistant Professor	1	0

26. Faculty profile with name, qualification, designation, specialization, (D.Sc./D.Litt./Ph.D. / M. Phil. etc.,)

Name	Qualification	Designation	Specialization	No. of years of Experience	No. of Ph.D students guided for last four years.

11. List of senior visiting faculty: *NA*

12. Percentage of lectures delivered and practical classes handled (programme wise)

by temporary faculty: *Nil*

13. Student -Teacher Ratio (programme wise): *11:0*

14. Number of academic support staff (technical) and administrative staff; sanctioned and filled:  
*Academic Support Staff- Nil, Administrative Staff- Nil*

15. Qualifications of teaching faculty with DSc/ D.Litt/ Ph.D/ MPhil/PG: *Nil*

16. Number of faculty with ongoing projects from a) National b) International funding agencies and grants received: *Nil*

17. Departmental projects funded by DST-FIST; UGC, DBT, ICSSR, etc. and total grants received: *Nil*

18. Research Centre /facility recognized by the University. *NA*

19. Publications:

\* a) Publication per faculty:

Name of the Faculty Members	Title of Paper	Name of Journal	Vol. & Page with Year

\* Number of papers published in peer reviewed journals (national /international) by faculty and students. *-Nil*

\* Number of publications listed in International Database (For eg: Web of Science, Scopus, Humanities International Complete, Dare Database –

International Social Sciences Directory, EBSCO host, etc.)- *Nil*

\* Monographs *-Nil*

\* Chapter in Books *-Nil*

\* Books Edited *-Nil*

\* Books with ISBN/ISSN numbers with details of publishers *-Nil*

* Citation Index	-Nil
* SNIP	-Nil
* SJR	-Nil
* Impact factor	-Nil
* h-index	-Nil

20. Areas of consultancy and income generated: *None*

21. Faculty as members in:

- a) National committees: *No*
- b) International Committees: *No*
- c) Editorial Boards: *No*

22. Student projects

- a) Percentage of students who have done in-house projects including inter departmental/programme: *No*
- b) Percentage of students placed for projects in organizations outside the institution i.e.in Research laboratories/Industry/other agencies: *No*

23. Awards/ Recognitions received by faculty and students : *No*

24. List of eminent academicians and scientists/ visitors to the department: *No*

25. Seminars/ Conferences/Workshops organized & the source of funding:

- a) National: *No*
- b) International: *No*

26. Student profile programme/course wise:

Name of the course /programme ( refer question no.4)	Application received	Selected	Enrolled *M *F	Pass Percentage
2010-13	06	06	04 02	50%
2009-12	08	08	06 02	50%
2008-11	04	04	0 04	50%
2007-10	03	03	02 01	33%

M = Male, F= Female

## 27. Diversity of Students:

Name of the course	% of students from same state	% of students from other state	% of students from abroad
2010-13	100%	0	0
2009-12	100%	0	0
2008-11	100%	0	0
2007-10	100%	0	0

## 28. How many students have cleared national and state competitive examinations such as NET, SLET, GATE, Civil services, Defense services, etc.?:

- *Data not available*

## 29. Student progression:

Student Progression	Against % enrolled
UG to PG	80%
PG to M.Phil	0%
PG to Ph.D.	5%
Ph.D. to Post-Doctoral	0%
Employed *Campus Selection *Other than campus recruitment	0% <i>Data not available</i>
Entrepreneurship / Self-employment.	<i>Data not available</i>

## 30. Details of Infrastructural facilities

- a) Library: *Digitalized Library*
- b) Internet facilities for Staff & Students: *Internet with Wi-Fi facility for both.*
- c) Class rooms with ICT facility: *Not available*
- d) Laboratories: *Well equipped laboratories for Sc.*

31. Number of students receiving financial assistance from college, university, government or other agencies: *Students are getting UGC stipend and govt. scholarship.*32. Details on student enrichment programmes (special lectures / workshops / seminar) with external experts: *Special lectures and seminars are being organized for student enrichment programme.*

33. Teaching methods adopted to improve student learning: *Teacher student Interactive method is adopted to improve student learning.*
34. Participation in Institutional Social Responsibility (ISR) and Extension activities:  
*Students of the department actively participate in extension activities through N.S.S.*
35. SWOC analysis of the department and Future plans.



## **Format for Presentation of Practice**

### **Title of the Practice**

### **STEPS TOWARDS PERFECTION**

### **Self Study Report**

H.P.S.College, Madhepur, Madhubani (Bihar)

#### **1. Goal**

- The aim and practice of this institution has been to spread quality education among all section of society sans gender or class discrimination. Keeping in view the limitation of our resources and the compulsion of the backwardness of the area we impart education up to undergraduate level alone. We try our best to mould boys and girls morally and educationally sound. Keeping pace with the marching time and the needs of the hour the institution imparts education to design the disciple into diligent and responsible citizen able to avail themselves of satisfactory jobs in the competitive market of present day world.

#### **2. The Context**

- The institution has a co-education system up to undergraduate level in this economically backward but politically conscious area. The share of girl student is almost is 50%. In spite of that we have never faced any disturbance as against the prevailing uneasy atmosphere in other campuses.

#### **3. The Practice**

- The institution has laid out its master plan for all round development. Nearly 60% of our target and bench mark is completed. We have extended our interaction with the neighboring society in sphere of literacy, health and hygiene, eradication of untouchability through N.S.S.unit. To make the campus eco-friendly we have planted trees in and outside the campus. Keeping abreast the vision of election commission and the willing participation of politically conscious people we have made new entries in voter list from among students. For this special campaign was made among students and there is a satisfactory response. With

rising number of students we don't have sufficient class rooms and auditorium. The proposed land requisition for the development of the campus is in old store due to the lack of sufficient fund. There is a dire dearth of teachers and non-teaching staffs as against the sanctioned posts and recently started new courses. This adversely affects the teaching learning process.

#### **4. Evidence of Success**

- Tree plantation in and around campus has earned goodwill of people.
- Through participation in general classes and career oriented courses students have sought jobs through competition and self endeavour.
- Literacy awareness programmes have promoted people's response immensely.
- We have commendable result average and greater number of attendance in classes.
- These measures have accorded prestige to the institution in every walk of life.

#### **5. Problems Encountered and Resources Required**

Following are the problems encountered-

- 1- Acquisition of proposed campus land.
- 2- Construction of spacious class rooms.
- 3- Enhancement of playground area.
- 4- The construction of compound wall.
- 5- The construction of staff & principal quarter.

Apart from this separate Science and Commerce block, separate construction of administrative building, boy's and girl's common room, centre of ICT are required.

- The institution has submitted a master plan to this effect to the state government and U.G.C.

#### **6. Notes (Optional)**

- As already pointed out the institution has constraint in its way due to undeveloped area, not yet sufficient infrastructure, dearth of teaching and non-teaching staff, lack of technical staff due to the apathy of state government. We are of the view that if sufficient posts are created and sufficient fund is made available we could compete with bigger institution. Only if the

above demands are met we could be in a position to start PG centre in our campus and a reliable research unit also.

- We are making efforts to separate all three faculties in different blocks to retain and develop their own identities.

## 7. Contact Details

Name of the Principal:	Dr. Bishwanath Raut
Name of the Institution:	H.P.S.College
City:	Madhepur, Madhubani (Bihar )
Pin Code:	847408
Accredited Status:	'C'
Work Phone:	06273-283226
Fax:	06273-283226
Website:	<a href="http://www.hpscollege.com">http://www.hpscollege.com</a>
E-mail:	principal@hpscollege.com principalhpscollege@gmail.com
Mobile:	+91 9931909218

### Post Accreditation Initiatives

In the light of recommendations of the Peer Team which visited the college in 2006 following steps have been taken:-

The college made a road map for the development in the entire area for development of infrastructure and thereby upgrading quality teaching. Class rooms have been increased. Science laboratories have been upgraded and are up to the increasing needs of the students. Three new courses namely B.Com, Geography and Home Science have been started in the campus keeping in view the growing demands of the students and stakeholders. The university and the state government are in a way to fill up the existing teachers vacancies.

More numbers of books and journals have come to the college library which has been digitalized. Internet facility has been made available to it. A reading room for students has been provided and yet a bigger one under way of construction.

An Alumni Association is in a distance and the same has contributed to the development of the college. A Grievance Rederssal cell and a Women Cell are set in the college.

There is a Health Centre with a visiting doctor at the fixed time in the college. First Aid facility is available at all times. Since the visit of Peer Team all administrative work has been computerized. A canteen has been started for students and staff in the campus. A Boy's and Girl's common rooms are under way of construction. Fencing and grilling of the upper storey and the garden has been completed. A pond has been made for harvesting rain water in the campus.

Dharma Nand Shodh Peeth is marching ahead in the Research and the publication work.

Banking facility with ATM has been provided in the campus. As against 268 students during NAAC 2006, the institution has till date 833 students (Boys-514, Girls-319 ) in UG classes.

The overall academic ambience in the college is much better today.

*The quest for excellence is a continuous and never ending process?*

### **Declaration by the Head of the Institution**

I certify that the data included in this Self-Study Report (SSR) are true to the best of my knowledge.

This SSR is prepared by the institution after internal discussions, and no part thereof has been outsourced.

I am aware that the Peer team will validate the information provided in this SSR during the peer team visit.

**Dr. Bishwanath Raut**

Principal

H.P.S.College, Madhepur

Place: Madhepur

Date: 03<sup>rd</sup> January,2014





COPY

No. S.1-104/72 (CP) Vol. I

2nd March, 1985.

The Registrar,  
L.J. Mittal's University,  
Bathinda.Subject: Re-numbering of Section 12-A of the Principal  
UGC Act, 1956 as Section 12-B w.e.f. 1st October,  
1984 - Regarding.

Sir,

I am directed to say that the University Grants Commission (Amendment) Act, 1984 has come into force w.e.f. 1st October, 1984. The said notification No. F.12-2/84 dated 1st October, 1984 issued by the Ministry of Education & Culture, Govt. of India, published in the Gazette of India, Extraordinary (Part II, Section 3-Sub-Section (1)). Section 3 of the UGC (Amendment) Act 1984 provides that in the principal Act of 1956, Section 12-A is to be renumbered as Section 12-B. The effect of the UGC (Amendment) Act, 1984 would be that w.e.f. 1st October, 1984, Section 12-A of the Principal UGC Act, 1956 would read as Section 12-B, which would include the rules previously made under this section.

This notification is brought to the notice of the University for information and appropriate action.

It is requested that this may be brought to the notice of all the colleges/institutions within the jurisdiction of your University.

The UGC Act, 1956 (as modified upto 1st October, 1984) is being printed. A copy of the UGC Act, 1956 will be made available to the University in due course.

Yours faithfully,  
Sd/- V.D. Sharma,  
Registrar.

Copy for necessary action to:-  
1. All Colleges/Institutions in UGC.  
2. No. S.1-65/80 (CP).

Sd/- Z.D. Sharma,  
Deputy Secretary.

Lalji Karan Mittal's University,  
Bathinda.

Date No. 1934-2059

Date 1/4/85

Copy forwarded to:-  
1. All the Heads of the University Departments; &  
2. All the Principals of colleges under L.J. Mittal's University,  
Bathinda;  
for information & necessary action.

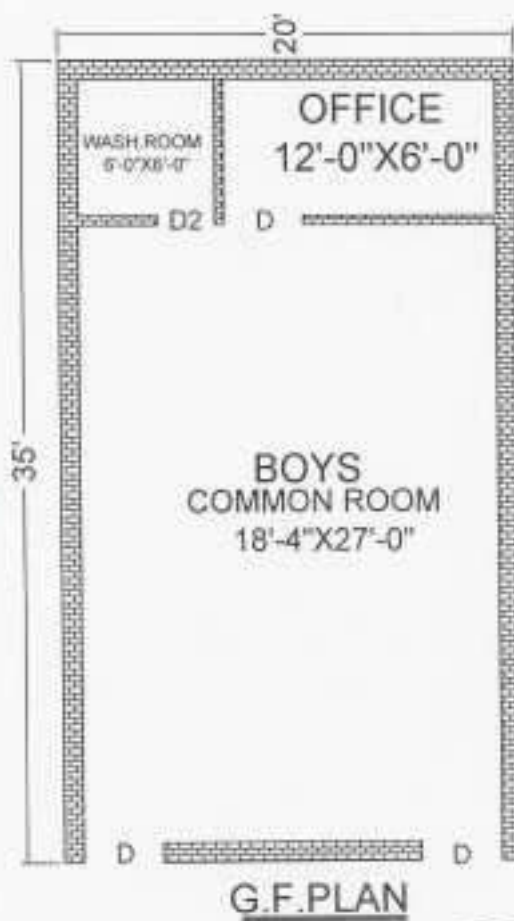
REGISTRAR

### Construction Master Plan





PLAN FOR THE PROPOSED CONSTRUCTION OF COMMON ROOM  
FOR BOYS IN H.P.S.COLLEGE ( MADHEPUR )DISTT :- MADHUBANI  
UNDER L.N.M.U.DARBHANGA  
PLINTH AREA = 20'X35' = 700 SFT



*S. K. Sharma*  
10/10/23

PLAN FOR THE PROPOSED CONSTRUCTION OF COMMON ROOM  
FOR GIRLS IN H.P.S.COLLEGE (MADHEPUR) DISTT :- MADHUBANI

UNDER L.N.M.U.DARBHANGA

PLINTH AREA = 20'X20' = 400 SFT



G.F.PLAN

*S. A. Hashem*  
 Mr. S. A. Hashem 14/6/18  
 B.Sc. (Engg) 1st Year  
 Consultant Civil Engineer  
 14, Chandra Mohan Street, Madhubani  
 PIN - 847 001  
 Phone No. 9456111111  
 Mobile No. 9456111111

PLAN FOR THE PROPOSED CONSTRUCTION OF ADMINISTRATIVE  
BLOCK IN H.P.S.COLLEGE (MADHEPUR) DISTT - MADHUBANI

UNDER L.N.M.U.DARBHANGA

PLINTH AREA =  $35 \times 45 = 1575$  SFT



F.F.PLAN

*[Handwritten signature]*



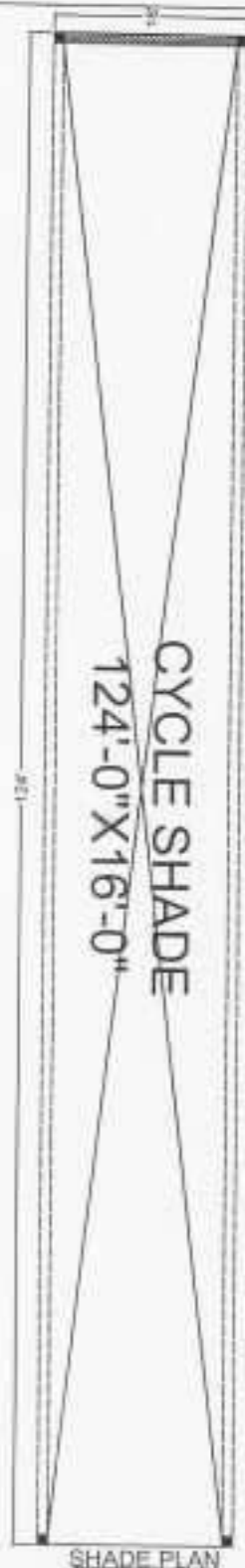
## H.P.S. COLLEGE, MADHEPUR, MADHUBANI

### Detail Project Report

**List of Items with estimated price for Language Laboratory:-**

S.No.	Name of the equipments	Price	Qty	Amount	Justifications
01	Lenovo Desktop Computer with TFT, UPS & accessories Intel Pentium Processor Latest 2 <sup>nd</sup> generation Configuration	45500.00	20	9,10,000.00	For Lab & student classrooms.
02	Wireless Networking.	90000.00	all	90000.00	For language classroom
03	Language Lab Software with its accessories like Head Phone, voice recorder etc. with Installation and Annual Maintenance charges	875000.00		8,75,000.00	For Language Lab classroom
04	Printer laserjet latest model	18000.00	01	18,000.00	For printing.
05	Lab furnishing work (carpeting, ceiling, wall paneling, door & window, flooring, lightning etc.)	400000.00		4,00,000.00	Furniture & Fixtures.
06	Air conditioner One and half ton with accessories and fitting.	48500.00	02	97000.00	To be used in language lab.
07	Computer Table Standard	2500.00	20	50000.00	Furniture & Fixtures.
08	Standard computer Chair	3000.00	20	60000.00	Furniture & Fixtures.
	<b>Total =</b>			<b>25,00,000.00</b>	

PLAN FOR THE PROPOSED CONSTRUCTION OF CYCLE SHADE  
 IN H.P.S. COLLEGE (MADHEPUR) DISTT - MADHUBANI  
 UNDER L.N.M.U. GARBHANGA  
 PLINTH AREA = 16'X124' = 1984 SFT



*S. A. Hashim*  
 Er. S. A. Hashim 10/10/23

B.Sc. Engg. / B.E.  
 Consultant Civil Engineer  
 10/10/23  
 10/10/23  
 10/10/23  
 10/10/23